

Northern Lands

MMSA

Urban Limit

Western Lands

Eastern Lands

Hidden Lake/Sherwins

Lakes Basin

High Country

# **SPHERES OF INFLUENCE AMENITIES**

## **Northern Lands**

### **Winter**

- Backcountry Skiing/Snowboard
- Dog Sledding
- Kicker Zone
- Nordic Skiing
- OSV
- Pet Play
- Snowplay
- Snowshoeing
- Vistas

### **Summer**

- Birding
- Bow Hunting
- Camping
- Climbing
- Disc Golf
- Equestrian
- Hiking/Walking
- Mountain Biking
- OHV
- Pet Play
- Road Biking
- Trail Running
- Vistas

## **Eastern Lands**

### **Winter**

- Backcountry Skiing/Snowboarding
- Ice Climbing
- Nordic Skiing
- OSV
- Vistas

### **Summer**

- Bouldering
- Caving
- Climbing
- Equestrian
- Fishing
- Fall Color Viewing
- Hiking/Walking

- Mountain Biking
- OHV
- Pet Play
- Trail Running
- Wildflowers

## **High Country**

### **Winter**

- Backcountry Skiing/Snowboarding
- OSV
- Pet Play
- Snowshoeing
- Vistas
- Winter Camping

### **Summer**

- Bouldering
- Camping
- Climbing
- Equestrian
- Fall Color Viewing
- Hiking/Walking
- Mountain Biking
- OHV
- Trail Running
- Vistas
- Wildflower Viewing

## **Lakes Basin**

### **Winter**

- Backcountry Skiing/Snowboarding
- Ice Fishing
- Ice Skating
- Nordic Skiing
- OSV
- Snowshoeing
- Winter Camping
- Winter Hiking/Walking
- Vistas

### **Summer**

- Boating
- Bouldering
- Camping
- Climbing

- Equestrian
- Fall Color Viewing
- Fishing
- Hiking/Walking
- Mountain Biking
- Pet Play
- Road Biking
- Swimming
- Trail Running
- Vistas
- Wildflower Viewing

### **Western Lands (formerly “Reds to Pass”)**

#### **Winter**

- Backcountry Skiing/Snowboarding (with OSV)
- OSV (on road)

#### **Summer**

- Birding
- Bouldering
- Camping
- Climbing
- Equestrian
- Fall Color Viewing
- Fishing
- Hiking/Walking
- Pet Play
- Road Biking
- Swimming
- Trail Running
- Vistas
- Wildflowers

### **MMSA**

#### **Winter**

- Backcountry Skiing/Snowboarding
- Dog Sledding
- Vistas

#### **Summer**

- Climbing
- Hiking/Walking
- Mountain Biking

- Trail Running
- Vistas

**Within the Urban Limit (formerly “Town”)**

**Winter**

- Nordic Skiing
- Pet Play
- Snowplay
- Snowshoeing
- Vistas
- Winter Camping
- Winter Hiking/Walking
- Workforce

**Summer**

- Camping
- Cross-Country Running
- Equestrian
- Fall Color Viewing
- Fishing
- Hiking/Walking
- Mountain Biking
- Pet Play
- Road Biking
- Vistas
- Workforce

**Sherwins/Hidden Lake (formerly “Sherwins”)**

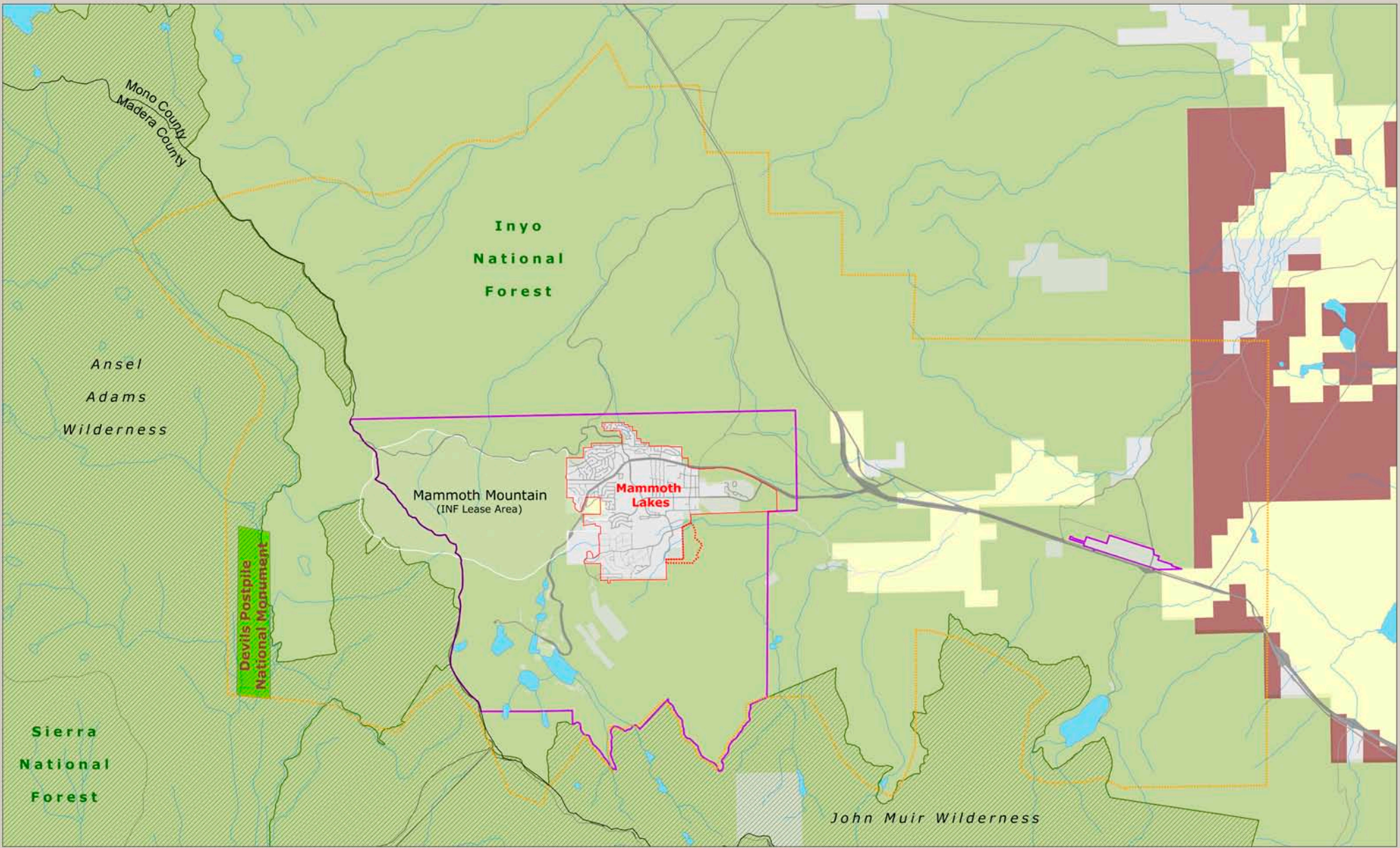
**Winter**

- Backcountry Skiing/Snowboarding
- Kicker Zone
- Nordic Skiing
- OSV
- Pet Play
- Snowshoeing
- Vistas

**Summer**

- Birding
- Equestrian
- Fall Color Viewing
- Hiking/Walking
- Mountain Biking
- Pet Play

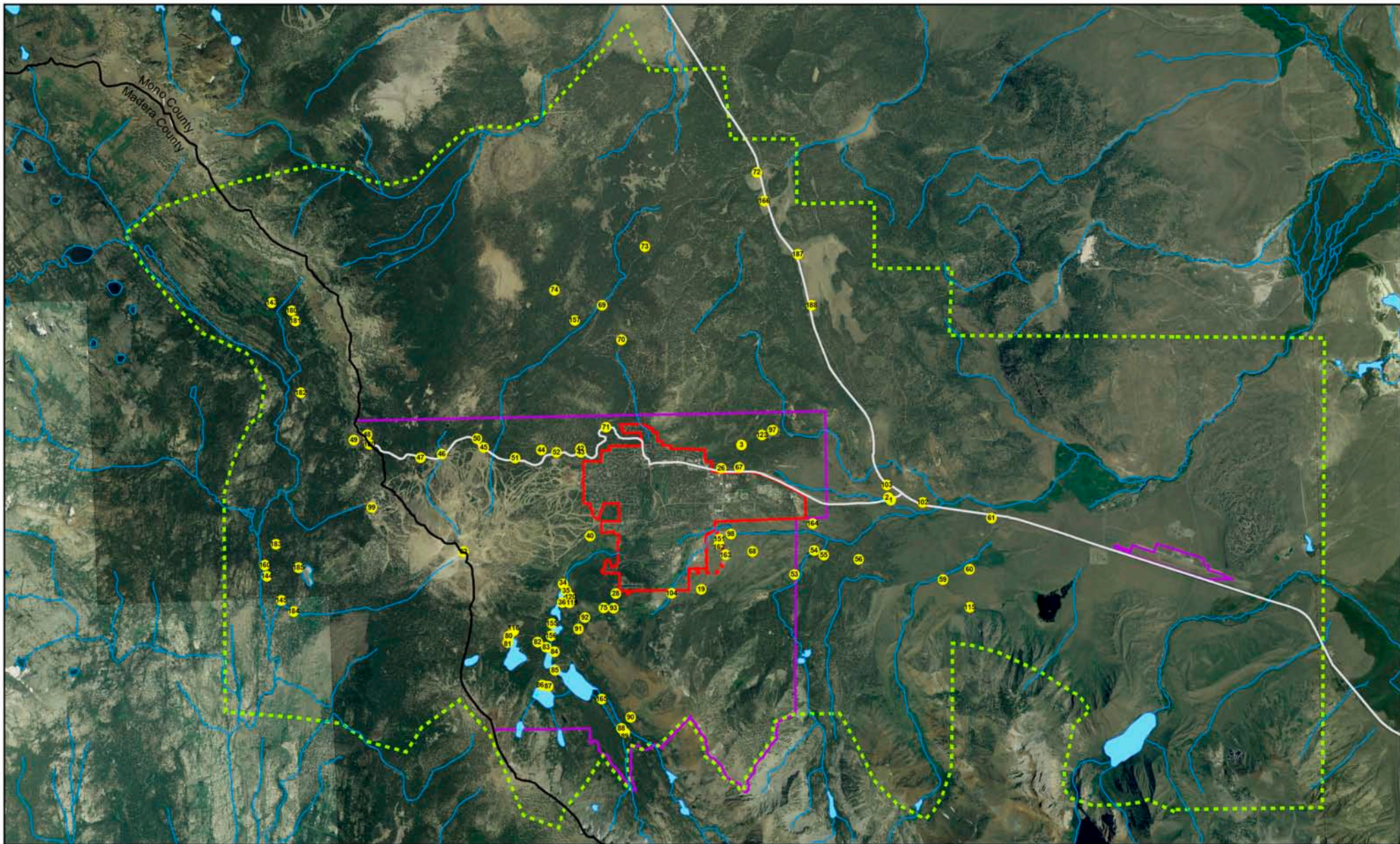
- Trail Running
- Vistas
- Wildflower Viewing



	County Boundary		Bureau of Land Management
	Lakes		National Monument
	Rivers		National Forest
	Roads		LA Dept. of Water & Power
	Urban Limit		All Other Ownerships
	Town Boundary		
	Planning Area (General Plan, 1987)		
	Wilderness		
	Mammoth Mountain Ski Area		
	Snowweek VIII Golf Course Extension		

# Mammoth Lakes Jurisdictional Map



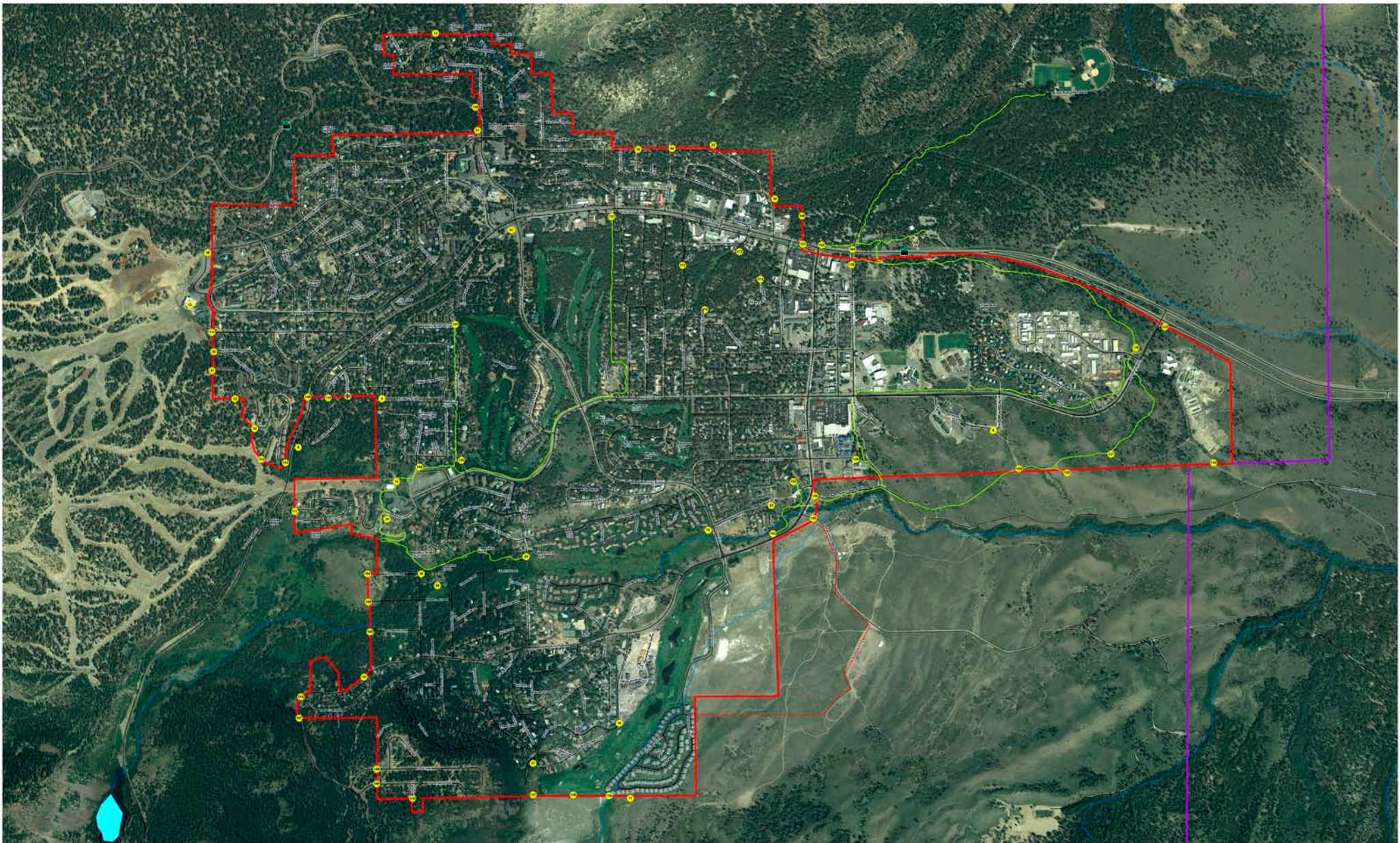


-  County Line
-  Urban Growth Boundary
-  Major Roads
-  Planning Area (General Plan, 1987)
-  Rivers
-  Identified Access Points
-  Lakes
-  Snowcreek VIII Golf Course Extension
-  Town Boundary

MLTPA GIS Inventory Contract: Identified Access Points Outside of Urban Growth Boundary for Public Review and Comment







-  Town Boundary
-  Urban Growth Boundary
-  Rivers
-  Lakes
-  Streets
-  Mammoth Lakes Trail System
-  Identified Access Points
-  Snowcreek VIII Golf Course Extension

## MLTPA GIS Inventory Contract: Identified Access Points Within Urban Growth Boundary for Public Review and Comment



**alta**  
PLANNING • DESIGN



**MLTPA**  
MAMMOTH LAKES TRAIL PLAN • MAMMOTH LAKES TRAIL SYSTEM  
1000 N. MAIN ST. SUITE 100 • MAMMOTH LAKES, CA 93546  
760.933.1111 • www.mltpa.org



0
0.25
0.5 Miles

11.01.20