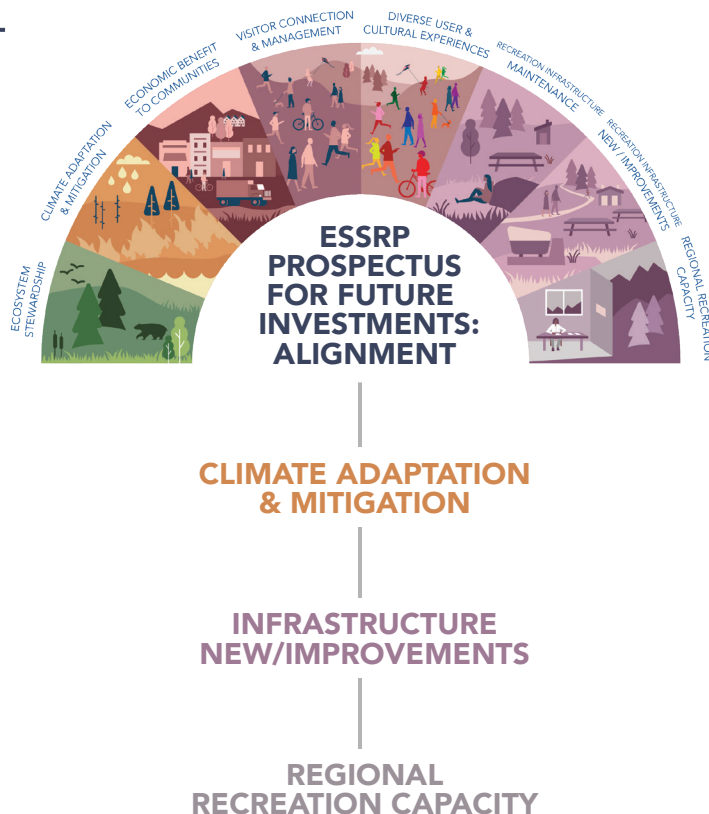




VULNERABILITY IN CALIFORNIA'S EASTERN SIERRA: ASSET INVENTORY & GAP ANALYSIS

The Eastern Sierra Council of Governments seeks to implement two recommended actions from the region's recently completed climate adaptation and resilience assessment, "A Changing Climate: Vulnerability in California's Eastern Sierra." Through a GIS-based asset inventory, the region will identify infrastructure in all jurisdictions that supports the region's recreation economy, such as visitor centers, campgrounds, water systems, and bathrooms. While all regional jurisdictions maintain GIS databases, data quality varies wildly, making it difficult to look at the region's recreation amenities systemically. With the infrastructure inventory complete, a gap analysis will identify on-the-ground infrastructure needs to meet the future demands of sustainable recreation given the anticipated effects of climate change and visitor audience growth.



FUNDING APPLICATION LEAD AGENCY:

Eastern Sierra Council of Governments

