

A photograph of a snowy street in Wellsboro, Pennsylvania. The scene is decorated for Christmas with several small evergreen trees placed along the sidewalk, each adorned with red and white ornaments. Black street lamps with glowing yellow lights are also decorated with green wreaths and red bows. The background shows snow-covered trees and a red brick building. The overall atmosphere is festive and wintry.

National Summit for Gateway Communities

A State Perspective

Cindy Adams Dunn
Pennsylvania DCNR

Downtown Wellsboro, Tioga County
Gateway to the Pine Creek Gorge/Grand Canyon of PA

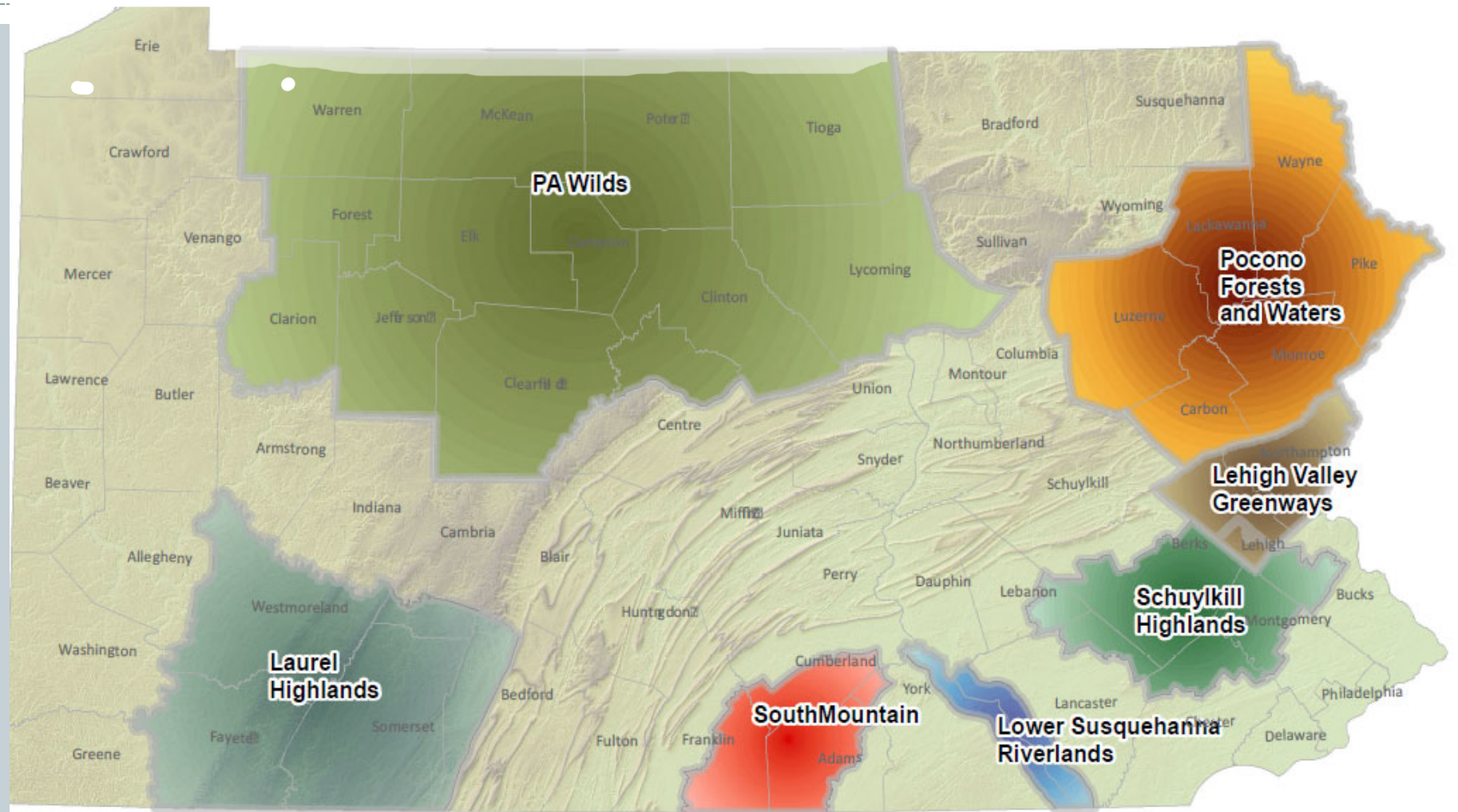
PA Department of Conservation & Natural Resources

A Snapshot



- 121 state parks: one within 25 miles of every resident
 - Gold Medal State Park System.
 - Every dollar spent on state parks generates \$12 in value added income to PA.
 - Annual Attendance of over 38.4 million.
- 2.2 million acre state forest system
 - FSC certified under the Forest Stewardship Council standards.
- \$30-45 million annual grant program
 - Grants for conservation and recreation projects in communities.
 - Fund partnerships, regional initiatives and community engagement.
 - Our Conservation Landscapes & Heritage Areas are key partners.

Pennsylvania's Conservation Landscapes



Pennsylvania Wilds

Fast Facts:

- One of state's official tourism regions.
- Large rural area/working landscape that's a quarter of state's land area but only 4% of the population.
- Two National Wild & Scenic Rivers.
- The largest wild elk herd in the Northeast.
- Some of the darkest skies in the country.
- A rich oil and lumber heritage.

- Roughly the size of Massachusetts or Vermont with as much public land as Yellowstone. Public land includes:

- 50 State Game Lands
- 29 State Parks
- 8 State Forests
- Allegheny National Forest



© 2017 PA Wilds Center for Entrepreneurship, Inc.

- 50+ stakeholder organizations
- 300+ local governments
- **12 County Intergovernmental Cooperative Agreement**



A declaration of principles FOR THE PENNSYLVANIA WILDS TEAM

We the residents, business community, marketers, planners, representatives and stewards of the rivers, streams and lakes, towns and villages, parks and forests, wildlife and dark skies that comprise the region known collectively as THE PENNSYLVANIA WILDS, hereby commit ourselves to fulfilling the following mission and upholding and living by the unique core values that define THE PENNSYLVANIA WILDS and the authentic experiences it represents.

OUR MISSION

Celebrate and nurture our natural wonders by connecting people with nature.

OUR PHILOSOPHY

The way of nature is our way of life.

OUR METHOD

Welcome those who share our passions.

OUR PROMISE

The road less traveled makes all the difference.

Our core values spring from the soul of our organization. We will adhere and live by these beliefs even if doing so becomes unpopular or costs us commercial opportunity.

OUR VALUES INCLUDE

Charm not chain | Stewardship of the land | The joy of exploration and discovery
Cultivating the relationship between people and the environment
Preserving, sharing and creating new stories | Aspiring to excellence in all we do

Our personality traits describe the unique characteristics that separate us from other places in the world. We celebrate these traits and bring them into every facet of THE PENNSYLVANIA WILDS. WE ARE: Down to earth; Quirky and authentic, not slick; Wild yet welcoming; Enthusiastic and optimistic; Rugged and resourceful. We commit ourselves to working TOGETHER to fulfill our mission every day, while living by our core values in THE PENNSYLVANIA WILDS.

The Pennsylvania Wilds
Center for Entrepreneurship

The Pennsylvania Wilds
Regional Marketing Corporation

The Pennsylvania Wilds
Planning Team

A DECLARATION OF PRINCIPLES FOR THE PENNSYLVANIA WILDS

WE the residents, business community, marketers, representatives and stewards of the rivers, streams and lakes, towns and villages, parks and forests, wildlife and dark skies that comprise the region known collectively as THE PENNSYLVANIA WILDS, hereby commit ourselves to fulfilling the following mission and upholding and living by the unique core values that define THE PENNSYLVANIA WILDS and the authentic experiences it represents.

OUR MISSION

Celebrate and nurture our natural wonders by connecting people with nature.

OUR PHILOSOPHY

The way of nature is our way of life.

OUR METHOD

Welcome those who share our passions.

OUR PROMISE

The road less traveled makes all the difference.

Our core values spring from the soul of our organization. We will adhere and live by these beliefs even if doing so becomes unpopular or costs us commercial opportunity.

OUR VALUES INCLUDE: Charm not chain; Stewardship of the land; The joy of exploration and discovery; Cultivating the relationship between people and the environment; Preserving, sharing and creating new stories; Aspiring to excellence in all we do.

Our personality traits describe the unique characteristics that separate us from other places in the world. We celebrate these traits and bring them into every facet of THE PENNSYLVANIA WILDS.

WE ARE: Down to earth; Quirky and authentic, not slick; Wild yet welcoming; Enthusiastic and optimistic; Rugged and resourceful.

We commit ourselves to working toward fulfillment of our mission every day, while living by our core values in THE PENNSYLVANIA WILDS.

Edward G. Rendell

Mike Krempasky
David Brooks
Peter Lopes
Jason Fink
Rina Cutler
Dennis Yablonsky
Sandi Spencer
Linda Devlin
Edward G. Rendell



Edward G. Rendell, Governor

J. Mickey Rowley, Deputy Secretary, Tourism

David Morris, NW Pennsylvania's Great Outdoors
Division, Game, Fish, Forest and Jefferson Counties
Diane Shawley, Warren County

Mike Krempasky, DCNR

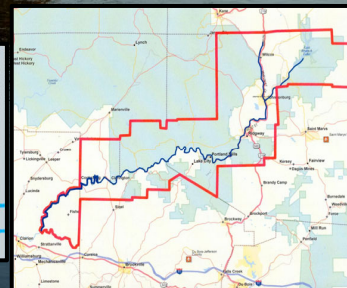
Michael Diberardinis, Secretary DCNR
David Brooks, Potter County
Peter Lopes, Clinton County

Jason Fink, Lycoming County

Rina Cutler, Deputy Secretary PennDOT

Sandi Spencer, Tioga County
Linda Devlin, McKean County
Dennis Yablonsky, Secretary DCEd

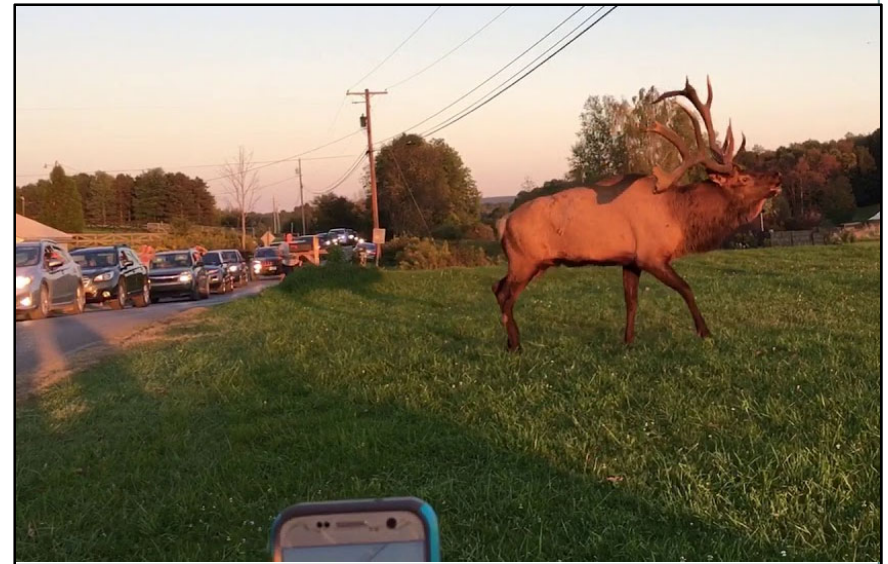
Sandy Fink Barrett, Clearfield County





Benezette Township

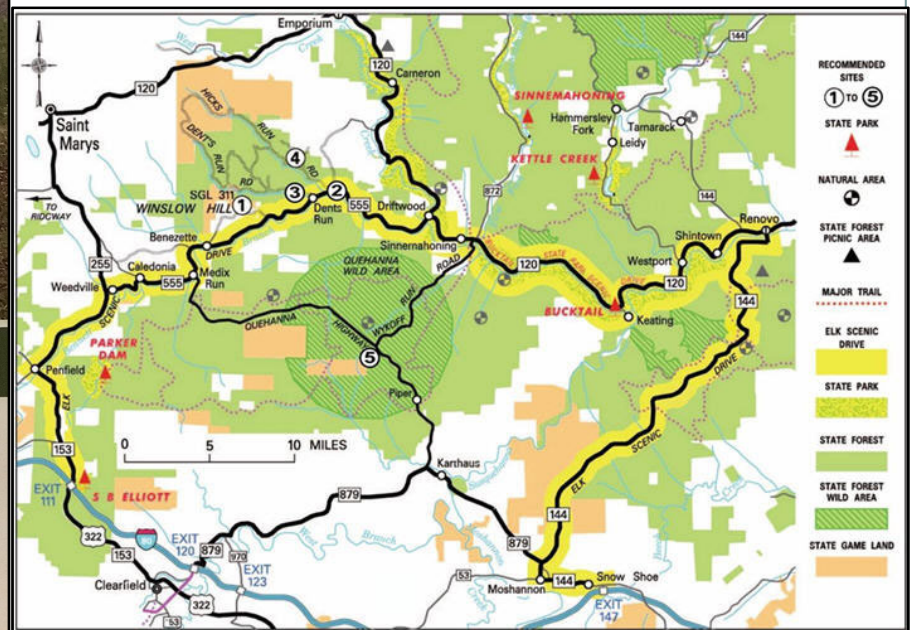
Traffic & Transportation Study



September 2018

Prepared for:
Benezette Township
105 Schoolhouse Road
P.O. Box 15821
Benezette, PA 15821
(814) 787-8811

Prepared by:
Michael Baker International, Inc.
4431 N. Front Street
Harrisburg, PA
(717) 213-2900





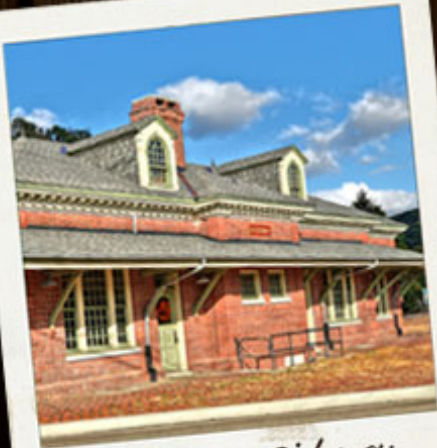
Cherry Springs State Park, Potter County



DESIGN GUIDE

for Community Character Stewardship

Second Edition



*Train Depot - Ridgway
Elk County*



*Alabaster Coffee - Williamsport
Lycoming County*



*Warren Business District
Warren County*



*Veterans Mural
Clinton County*



Pennsylvania's Conservation Landscapes

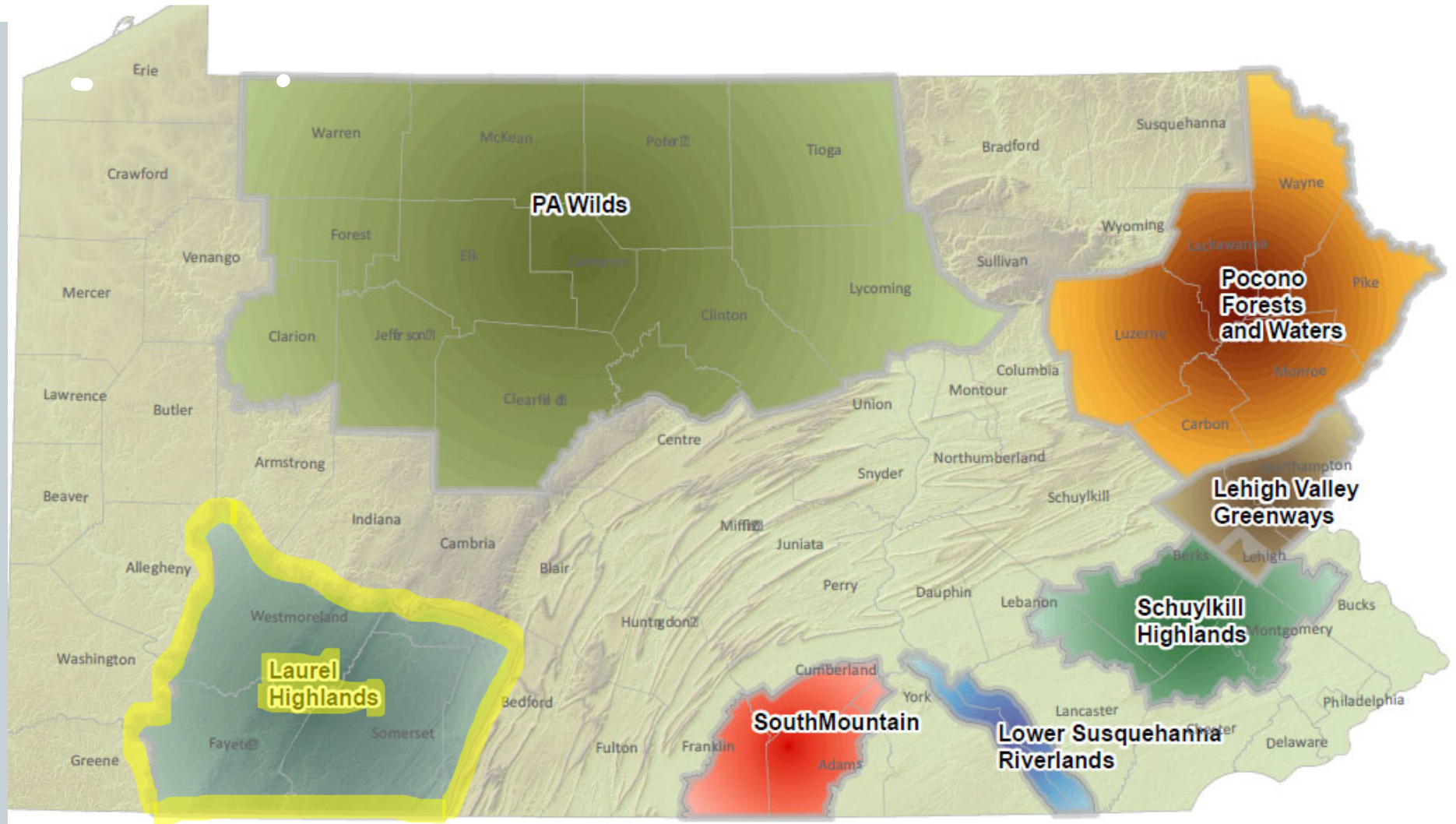


Figure 1: Location Map

