

# Welcome

## Sustainable Recreation Plan



Sustainable  
Recreation Plan  
SOUTH SISKIYOU COUNTY

alta







*Dedicated to advancing rural economic development and community health through sustainable outdoor recreation*

- **Mt. Shasta Nordic Center**
- **Recreation & Active Transportation Planning**
- **Trail Construction & Stewardship**
- **Mt. Shasta 4<sup>th</sup> July Walk/Run**
- **2022 & 2023 Grinduro, CA**



mt. shasta  
nord

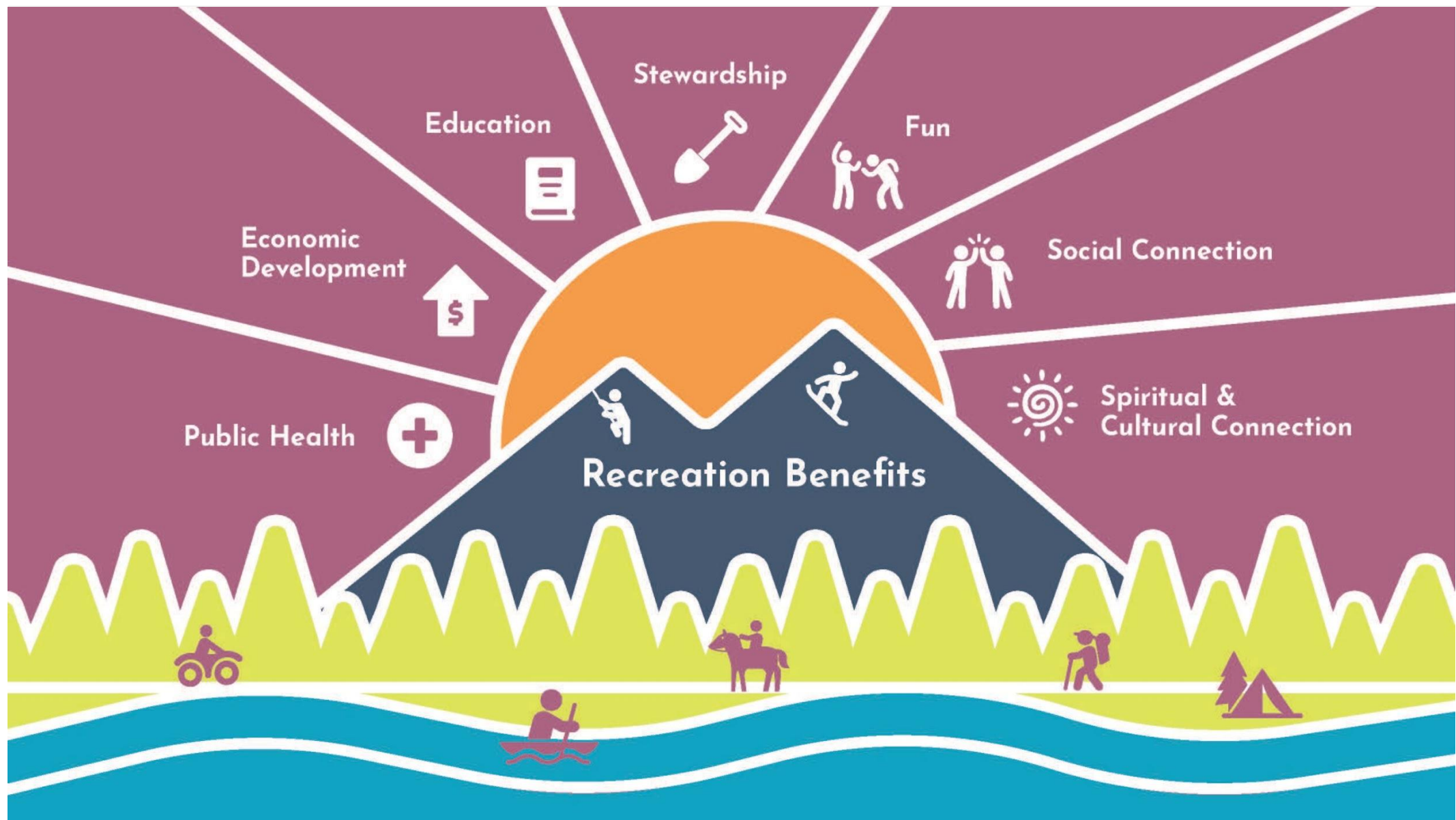




# Why Sustainable Recreation?









# Project Overview

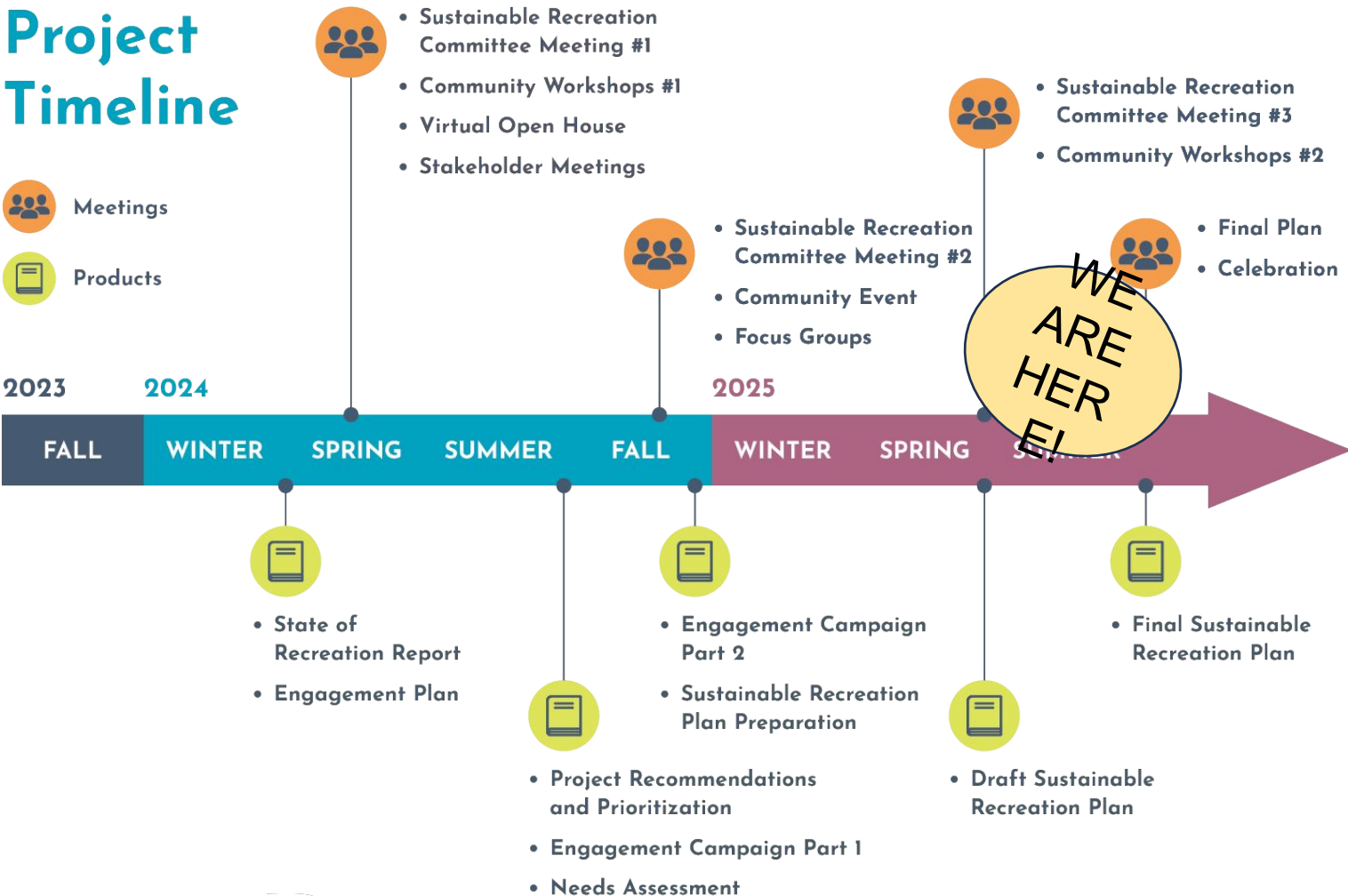




Project funding provided by the Sierra Nevada Conservancy through its Sustainable Recreation, Tourism, and Equitable Outdoor Access Directed Grant Program (2023).



# Project Timeline





# Two Years of Work Together

## Coalition Building

- Formed a Recreation Committee
- Public Workshops
- Partner Interviews
- Focus Groups
- Convening Working Groups

## Mapping and Documentation

- Research
- Identifying issues, challenges, and opportunities
- Fieldwork
- Trail Concept Planning

## Project Development

- Community-Driven Project Ideas
- Prioritization and Voting
- Next Steps



**A roadmap for regional recreation priorities**  
**Momentum for ongoing collaboration**



# Documenting the State of Recreation

As we were researching, mapping, interviewing, and planning, six major focus areas emerged:

- Economic Development
- Equitable Access
- Climate and Fire Hazard Mitigation
- Maintenance and Stewardship
- Land Ownership and Access
- Funding and Governance



Source: Jason Young, Discover Siskiyou

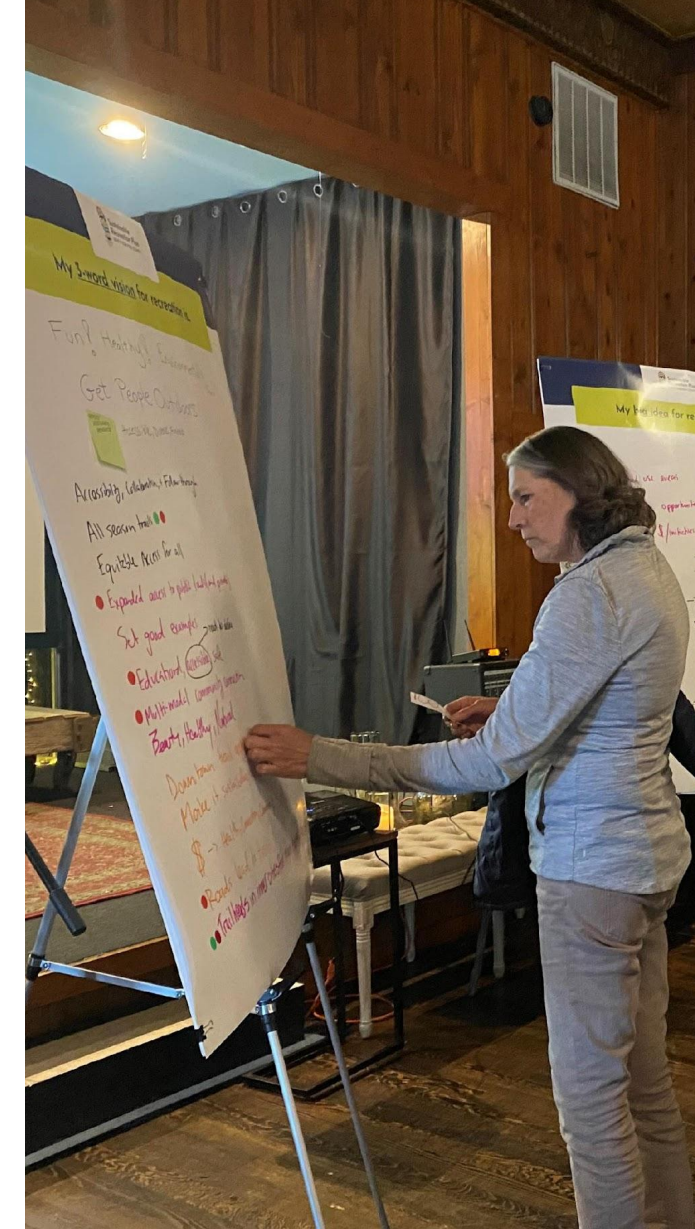




# Challenges & Successes









# Community Partnerships

- This plan is built on connections to other plans.
- This process has already started new efforts around recreation:
  - Beer on the Bench
  - Single Track Summit
  - Forest Service relationships
  - Watershed planning across the divide
  - Winter Road Access stakeholder meetings
  - Siskiyou Regional Climate Collaborative





# Priority Projects & Programs

## Projects

- **Regional:** Town-to-Town Trails Concept
- **Dunsmuir:** Hedge Creek Falls to Mossbrae Falls Access
- **McCloud:** Round the Mountain Route: Mount Shasta Circumnavigation Trail
- **Mt. Shasta:** Lake Siskiyou Delta Bridge Project
- **Weed:** Weed to Black Butte Trail

## Programs

- **Everitt Memorial Highway and Castle Lake Winter Road Access**
- **Fire Mitigation and Trail Maintenance and Development**





Hiking

Running

Dirt bike/ATV

Horseback riding



Road bike

Gravel bike

Mountain bike



Downhill ski/snowboard

Cross-country ski

Snowmobile



Swimming

Fishing

Boating

 Railroad

 Major Trail

 River



# Challenges/Needs

- Project planning around land ownership issues
- Funding
- We're looking for a someone who understands California's private landownership laws
- Capacity building

## Key Takeaways

- It's all about public engagement!
- Hire a good public engagement facilitator
- Cultivate relationships and partnerships with landowners and agencies







# Next Steps





# Regional Project Spotlight: Town-to-Town Trails Concept

A safe, comfortable, and family-friendly trail system of paved, unpaved, on-street, and off-street trails for people walking and biking, connecting downtown Mt. Shasta, Weed, Dunsmuir, and McCloud to each other and to key recreation destinations.



Sustainable  
Recreation Plan  
SOUTH SISKIYOU COUNTY

This rendering is intended for conceptual planning purposes only and does not depict a final or approved design.



# Dunsmuir Spotlight Project

## Hedge Creek Falls to Mossbrae Falls Access

Access for pedestrians on Upper Sacramento River to connect Hedge Creek Falls to Mossbrae Falls.



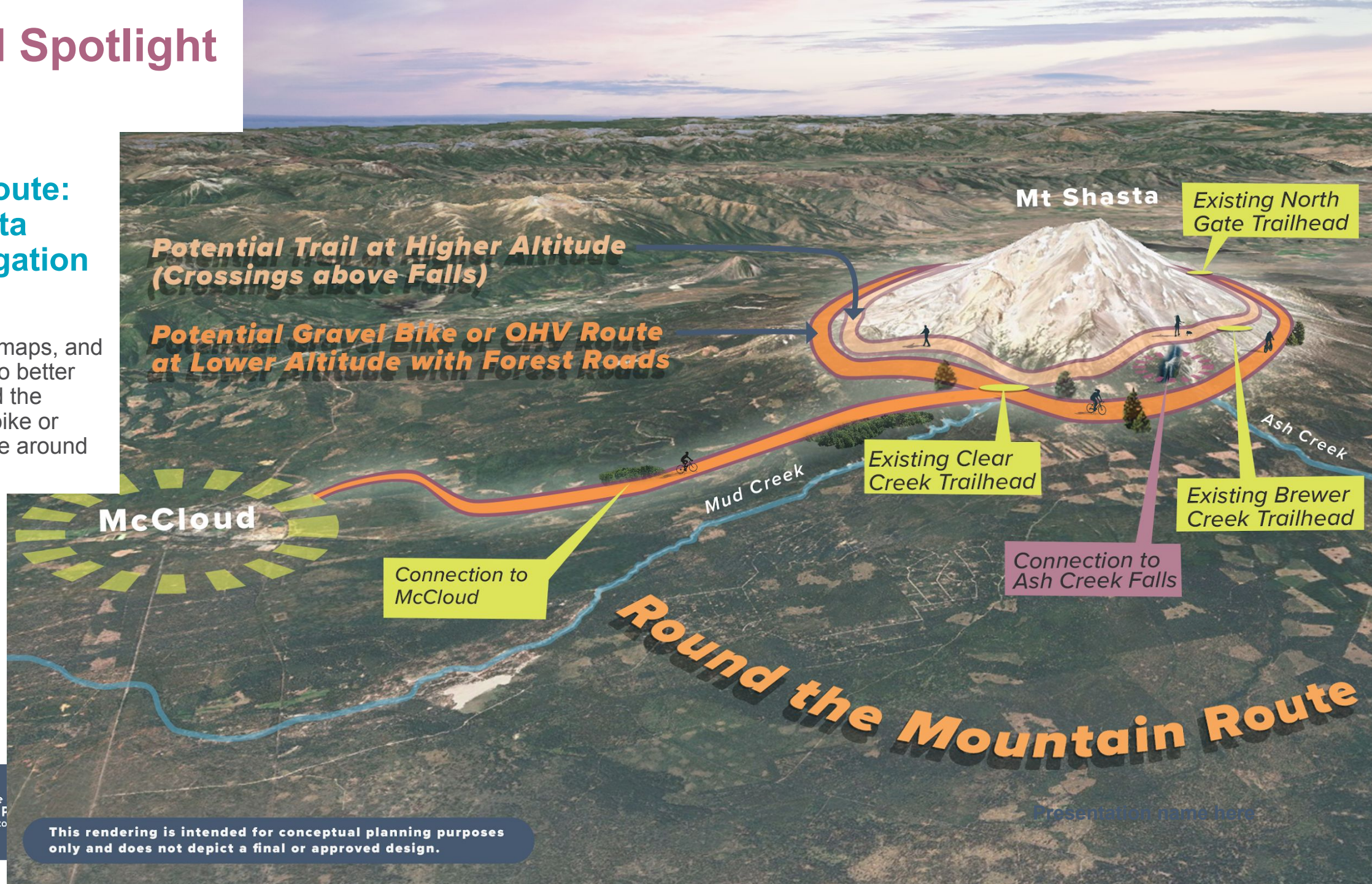
Sustainable  
Recreation Plan  
SOUTH SISKIYOU COUNTY



# McCloud Spotlight Project

## Round the Mountain Route: Mount Shasta Circumnavigation Trail

Develop signage, maps, and other information to better establish a "Round the Mountain" gravel bike or nonmotorized route around Mount Shasta.



**Potential Trail at Higher Altitude  
(Crossings above Falls)**

**Potential Gravel Bike or OHV Route  
at Lower Altitude with Forest Roads**

Mt Shasta

Existing North Gate Trailhead

Existing Clear Creek Trailhead

Existing Brewer Creek Trailhead

Connection to Ash Creek Falls

Connection to McCloud

**Round the Mountain Route**

Presentation name here



Sustainable  
Recreation F  
SOUTH SISKIYOU CO

This rendering is intended for conceptual planning purposes only and does not depict a final or approved design.



# Weed Spotlight Project

## Weed to Black Butte Trail

This project proposes a new walking and biking trail connecting the City of Weed to Black Butte, a prominent recreation destination in South Siskiyou County.





# Continuing the Momentum

1. Move project forward through planning, partnerships and funding
2. Continue Sustainable Recreation Committee Meetings to build Strong partnerships
3. Prioritize research on recreation access on private lands





# Special Thanks to:

Tuli Potts, Sierra Nevada Conservancy

Source: Jason Young, Discover Siskiyou







**Sustainable  
Recreation Plan**  
SOUTH SISKIYOU COUNTY



**Learn More!**

[siskiyououtdooralliance.org](https://siskiyououtdooralliance.org)

[justi@siskiyououtdooralliance.org](mailto:justi@siskiyououtdooralliance.org)