

TOWN OF MAMMOTH LAKES - DEPARTMENT OF PUBLIC WORKS



SECTION 600
MAMMOTH LAKES TRAIL SYSTEM

LAST REVISION : JULY 2013

GENERAL

THE PURPOSE OF THE FOLLOWING MAMMOTH LAKES TRAIL SYSTEM (MLTS) STANDARDS IS TO GUIDE THE VARIOUS AGENCIES AND ORGANIZATIONS WITH IDENTIFIED ROLES IN THE MANAGEMENT AND/OR IMPLEMENTATION OF THE MLTS, AND TO ENSURE A CONSISTENT EXPERIENCE AND LEVEL OF SERVICE FOR TRAIL USERS. THIS DOCUMENT IS TO BE A LIVING DOCUMENT THAT IS UPDATED AS NECESSARY, AND CONFORMS TO THE NEEDS AND EXPECTATIONS OF THE TOWN OF MAMMOTH LAKES. THE FOLLOWING STANDARDS INCLUDE SECTIONS ON THE DESIGN AND IMPLEMENTATION OF SIGNAGE AND WAYFINDING, MULTI-USE PATHS, TRAIL AMENITIES, AND OTHER PEDESTRIAN FACILITIES.

TOWN OF MAMMOTH LAKES - DEPARTMENT OF PUBLIC WORKS



GENERAL

PUBLIC WORKS
DIRECTOR APPROVAL: 

DATE: May 7, 2014

STANDARD PLAN

600-1

SHEET 1 OF 1

SIGNAGE AND WAYFINDING

SECTION 601 PROVIDES DETAILS ON THE SIGNAGE AND WAYFINDING COMPONENT OF THE MAMMOTH LAKES TRAIL SYSTEM:

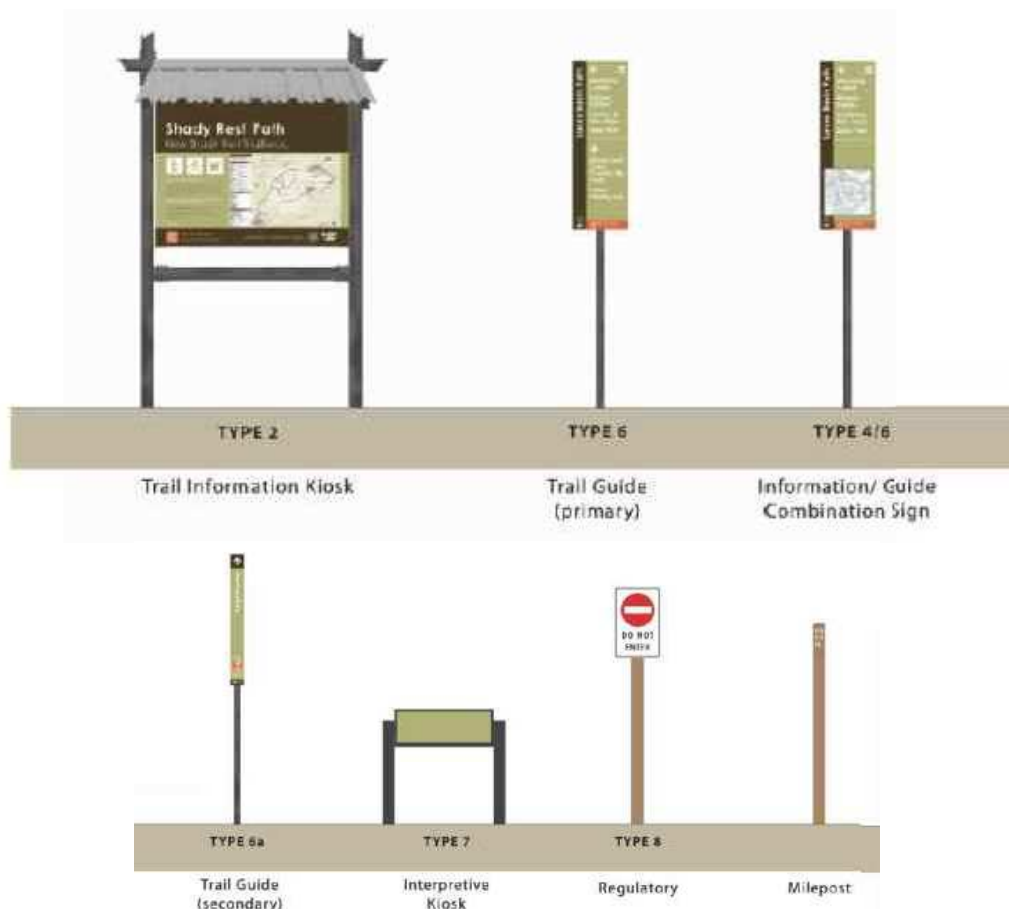
1. THE SIGN FAMILY AVAILABLE FOR USE ON THE MAMMOTH LAKES TRAIL SYSTEM
2. A DESCRIPTION OF EACH SIGN TYPE
3. GUIDELINES FOR SIGN SPACING AND TYPICAL LOCATIONS

DETAILED DRAWINGS AND SPECIFICATIONS FOR EACH SIGN TYPE ARE PROVIDED IN THE FOLLOWING SECTIONS:

SECTION 602 - WAYFINDING SIGNAGE
SECTION 603 - REGULATORY SIGNAGE
SECTION 604 - INTERPRETIVE SIGNAGE

SIGN FAMILY

THE MAMMOTH LAKES TRAILS SYSTEM EMPLOYS THE FOLLOWING FAMILY OF SIGNS FOR WAYFINDING, REGULATORY, AND INTERPRETIVE PURPOSES:



TOWN OF MAMMOTH LAKES - DEPARTMENT OF PUBLIC WORKS



SIGNAGE AND WAYFINDING

PUBLIC WORKS
DIRECTOR APPROVAL: *[Signature]*

DATE: May 7, 2014

STANDARD PLAN

601-1

SHEET 1 OF 4

SIGN TYPES AND DESCRIPTIONS

WAYFINDING SIGNAGE IS INTENDED TO HELP PEOPLE ORIENT THEMSELVES AS TO THEIR CURRENT LOCATION AND ASSIST THEM IN NAVIGATING FROM PLACE TO PLACE. EFFECTIVE WAYFINDING REQUIRES THE CONSISTENT USE AND ORGANIZATION OF VISUAL CUES. SOME MAMMOTH LAKES TRAIL SYSTEM SIGNS CONTAIN A RESCUE LOCATOR, WHICH SERVES NO WAYFINDING PURPOSE FOR THE TRAIL USER, BUT SERVES AS AN IMPORTANT SECONDARY WAYFINDING PURPOSE FOR EMERGENCY RESPONDERS. (SEE SECTION 602)

REGULATORY SIGNAGE PROVIDES FOR PUBLIC SAFETY OR INFORMS THE PUBLIC OF KEY RULES. SIGNS THAT PROVIDE FOR PUBLIC SAFETY SHOULD BE BRIGHTLY COLORED. THE GREATEST AMOUNT OF "SIGN POLLUTION" COMES FROM REGULATORY SIGNS, SO WHENEVER POSSIBLE, CONSOLIDATE RULES AND REGULATIONS ONTO ONE SIGN OR INTEGRATE WITH AN INFORMATION SIGN. (SEE SECTION 603)

INTERPRETIVE SIGNAGE IS INTENDED TO PROVIDE TRAIL USERS WITH EDUCATIONAL OPPORTUNITIES AND ENHANCED TRAIL EXPERIENCES USING PROGRAMS AND OTHER MEDIA TO FOSTER EMOTIONAL AND INTELLECTUAL CONNECTIONS BETWEEN VISITORS AND AN AREA'S NATURAL AND CULTURAL RESOURCES. (SEE SECTION 604)

THE FOLLOWING PROVIDES A BRIEF DESCRIPTION OF EACH SIGN TYPE EMPLOYED ON THE MAMMOTH LAKES TRAIL SYSTEM:

TYPE 2

THE TYPE 2 SIGN FUNCTIONS AS A TRAIL INFORMATION KIOSK AND IS GENERALLY LOCATED AT TRAILHEADS AND ACCESS POINTS. THIS SIGN TYPE IS DOUBLE-SIDED AND PROVIDES USER WITH ORIENTATION AND NAVIGATION INFORMATION. THE FRONT SIDE OF THE SIGN INCLUDES THE FOLLOWING: A PRIMARY I.D., PRIMARY I.D. CLARIFIER, CHOICE OR THREE RECREATION SYMBOLS, WELCOME MESSAGE, FACILITY DESCRIPTION, LOCATION INFORMATION, USER ETHICS MESSAGING, RESCUE LOCATOR INFORMATION, AND A MAP. THE BACKSIDE OF THE SIGN DISPLAYS A SYSTEM-WIDE MAP OR THE MAMMOTH LAKES TRAILS SYSTEM.

TYPE 4/6

THE TYPE 4/6 SIGN FUNCTIONS AS AN INFORMATION AND GUIDE COMBINATION AND IS GENERALLY LOCATED AT CRITICAL INTERSECTIONS THROUGHOUT THE TRAIL SYSTEM. THIS SIGN TYPE CAN BE SINGLE OR DOUBLE-SIDED AND PROVIDES USERS WITH ORIENTATION AND NAVIGATION INFORMATION. EACH SIGN PANEL HAS THE OPPORTUNITY FOR THE FOLLOWING: A PRIMARY I.D., DESTINATIONS, ARROWS, SERVICE SYMBOLOGY, MILEAGE, RESCUE LOCATOR, AND A MAP.

TYPE 6

THE TYPE 6 SIGN FUNCTIONS AS A PRIMARY TRAIL GUIDE AND IS GENERALLY LOCATED AT KEY INTERSECTIONS WITH MULTIPLE DESTINATIONS. THIS SIGN TYPE CAN BE SINGLE OR DOUBLE-SIDED AND PROVIDES USERS WITH NAVIGATION INFORMATION. EACH SIGN PANEL HAS THE OPPORTUNITY FOR THE FOLLOWING: A PRIMARY I.D., DESTINATIONS, AN ARROW, SERVICE SYMBOLOGY, MILEAGE, RESCUE LOCATOR.

TYPE 6a

THE TYPE 6a SIGN FUNCTIONS AS A SECONDARY TRAIL GUIDE AND IS GENERALLY USED AS A REASSURANCE MARKER IN CLOSE PROXIMITY TO INTERSECTIONS AND OTHER DECISION POINTS. THIS SIGN TYPE CAN BE SINGLE OR DOUBLE-SIDED AND PROVIDES USERS WITH NAVIGATION INFORMATION. EACH SIGN PANEL HAS THE OPPORTUNITY FOR THE FOLLOWING: A DESTINATION, AN ARROWS, MILEAGE, RESCUE LOCATOR.

TYPE 7

THE TYPE 7 SIGN FUNCTIONS AS AN INTERPRETIVE SIGN THAT IS INTENDED TO PROVIDE TRAIL USERS WITH EDUCATIONAL OPPORTUNITIES AND ENHANCED TRAIL EXPERIENCES. THIS SIGN TYPE USES PROGRAMS AND OTHER MEDIA TO FOSTER EMOTIONAL AND INTELLECTUAL CONNECTIONS BETWEEN VISITORS AND AN AREA'S NATURAL AND CULTURAL RESOURCES.

TYPE 8

THE TYPE 8 SIGN INCLUDES ALL REGULATORY SIGNAGE. THESE REGULATORY SIGNS PROVIDE FOR PUBLIC SAFETY AND/OR INFORMATION ON KEY RULES FOR TRAIL USERS, INCLUDING BUT NOT LIMITED TO SPEED LIMITS, YIELDING PROCEDURES, AND APPROVED TRAIL USES.

MILEPOST

THE MILEPOST SIGN TYPE PROVIDES USERS WITH REGULARLY SPACED MILEAGE INFORMATION. THIS SIGN TYPE IS LOCATED AT THE ORIGIN OF A TRAIL SEGMENT AND THEN AT QUARTER-MILE INTERVALS THEREAFTER FOR THE ENTIRETY OF THE TRAIL. EACH MILEPOST DISPLAYS A TRAIL SYSTEM LOGO, PRIMARY I.D. ABBREVIATION, AND A MILEAGE NUMBER.

TOWN OF MAMMOTH LAKES - DEPARTMENT OF PUBLIC WORKS



SIGN TYPE DESCRIPTIONS

PUBLIC WORKS
DIRECTOR APPROVAL: 

DATE: May 7, 2014

STANDARD PLAN

601-1

SHEET 2 OF 4

TYPE 8

THE TYPE 8 SIGN INCLUDES ALL REGULATORY SIGNAGE. THESE REGULATORY SIGNS PROVIDE FOR PUBLIC SAFETY AND/OR INFORMATION ON KEY RULES FOR TRAIL USERS, INCLUDING BUT NOT LIMITED TO SPEED LIMITS, YIELDING PROCEDURES, AND APPROVED TRAIL USES.

MILEPOST

THE MILEPOST SIGN TYPE PROVIDES USERS WITH REGULARLY SPACED MILEAGE INFORMATION. THIS SIGN TYPE IS LOCATED AT THE ORIGIN OF A TRAIL SEGMENT AND THEN AT QUARTER-MILE INTERVALS THEREAFTER FOR THE ENTIRETY OF THE TRAIL. EACH MILEPOST DISPLAYS A TRAIL SYSTEM LOGO, PRIMARY I.D. ABBREVIATION, AND A MILEAGE NUMBER.

TOWN OF MAMMOTH LAKES - DEPARTMENT OF PUBLIC WORKS**SIGN TYPE DESCRIPTIONS**

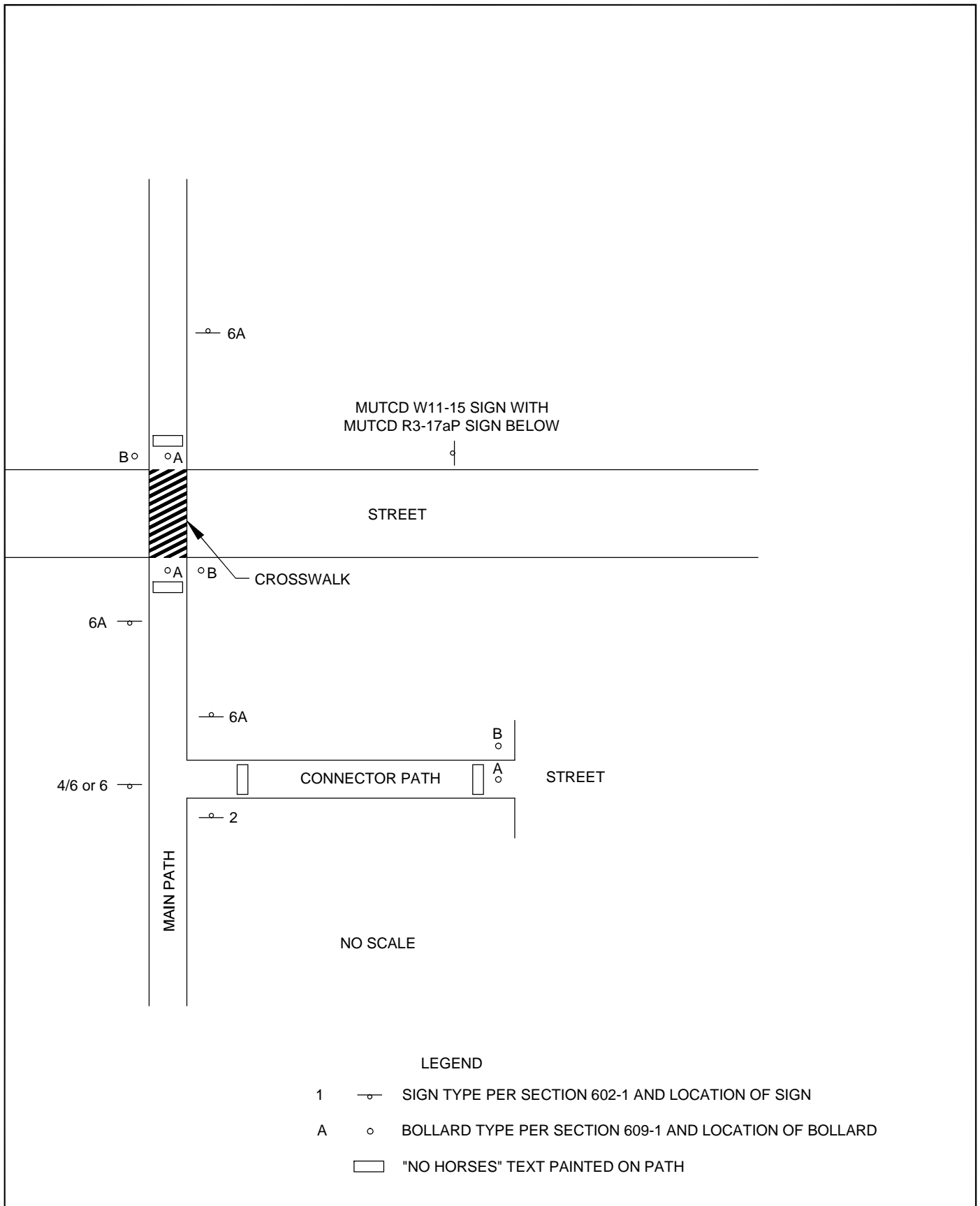
PUBLIC WORKS
DIRECTOR APPROVAL: 

DATE: May 7, 2014

STANDARD PLAN

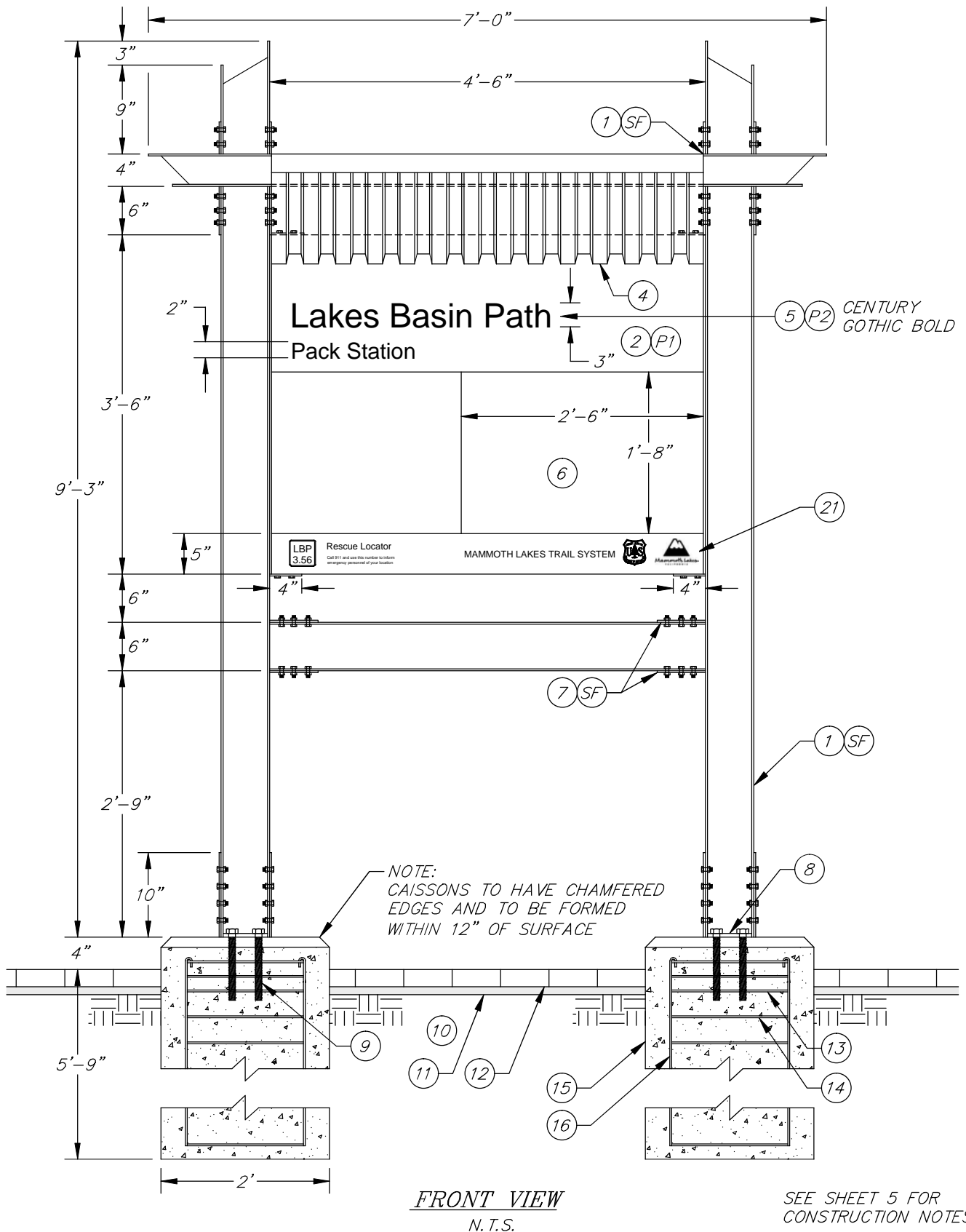
601-1

SHEET 3 OF 4



TOWN OF MAMMOTH LAKES - DEPARTMENT OF PUBLIC WORKS

	<p align="center">SIGN SPACING AND LOCATION</p> <p>PUBLIC WORKS DIRECTOR APPROVAL: </p> <p>DATE: May 7, 2014</p>	<p>STANDARD PLAN 601-1 SHEET 4 OF 4</p>
---	---	--



TOWN OF MAMMOTH LAKES - DEPARTMENT OF PUBLIC WORKS



SIGN TYPE 2 - FRONT VIEW

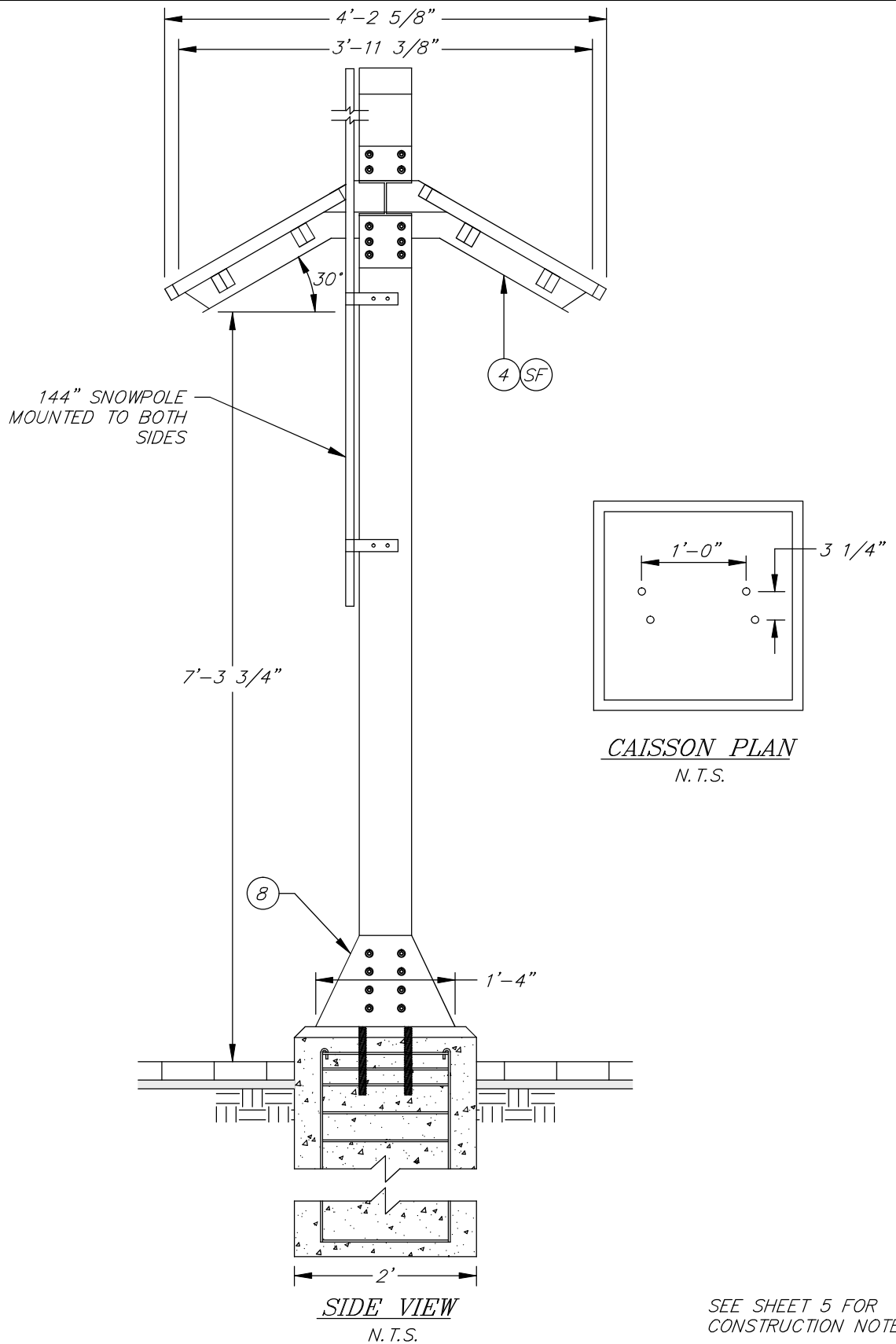
PUBLIC WORKS
DIRECTOR APPROVAL: *[Signature]*

DATE: May 7, 2014

STANDARD PLAN

602-1

SHEET 1 of 15



TOWN OF MAMMOTH LAKES - DEPARTMENT OF PUBLIC WORKS



SIGN TYPE 2 - SIDE VIEW

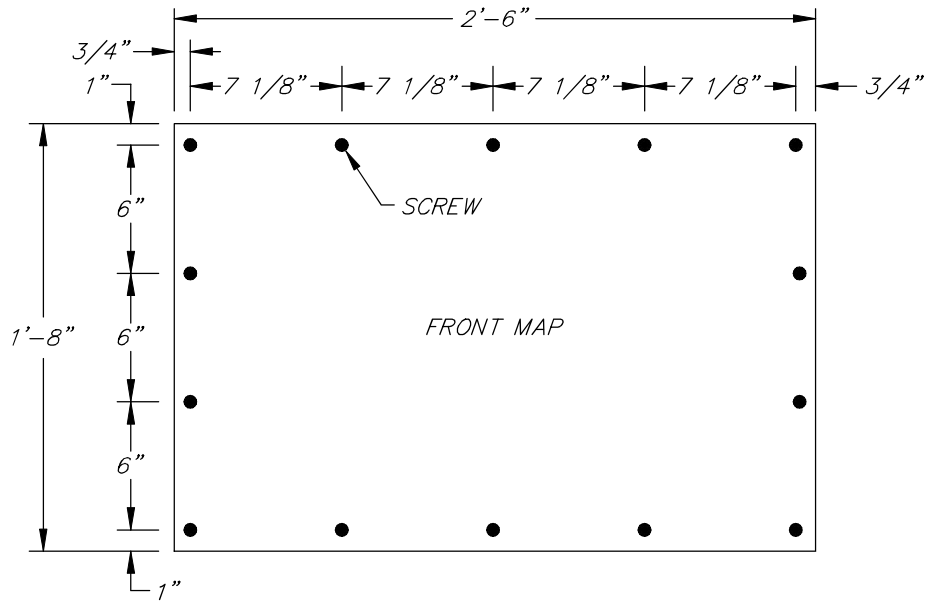
PUBLIC WORKS
DIRECTOR APPROVAL: *[Signature]*

DATE: May 7, 2014

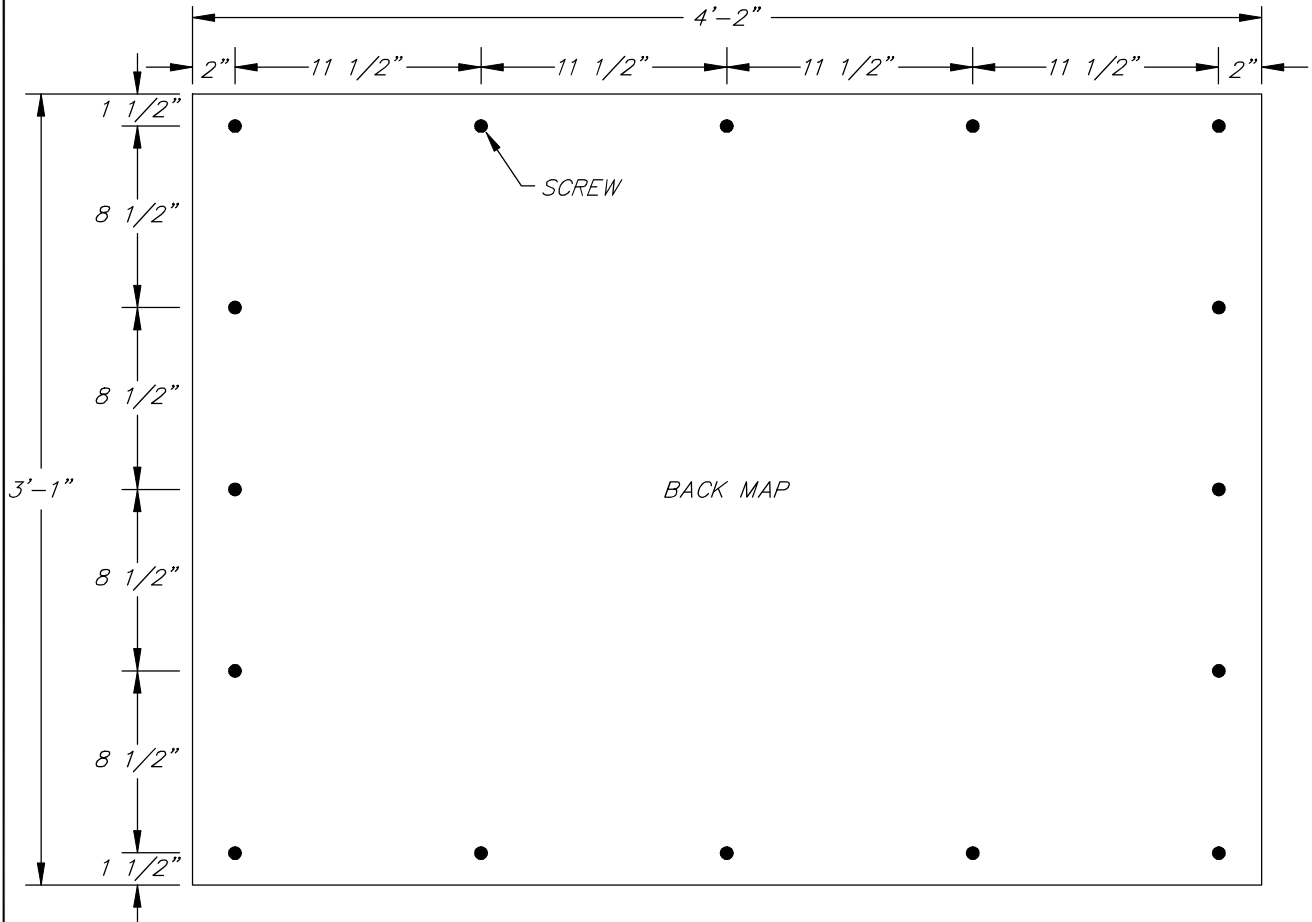
STANDARD PLAN

602-1

SHEET 2 of 15



FRONT MAP SCREW PLACEMENT
N.T.S.



BACK MAP SCREW PLACEMENT
N.T.S.

TOWN OF MAMMOTH LAKES - DEPARTMENT OF PUBLIC WORKS



SIGN TYPE 2
SCREW PLACEMENT

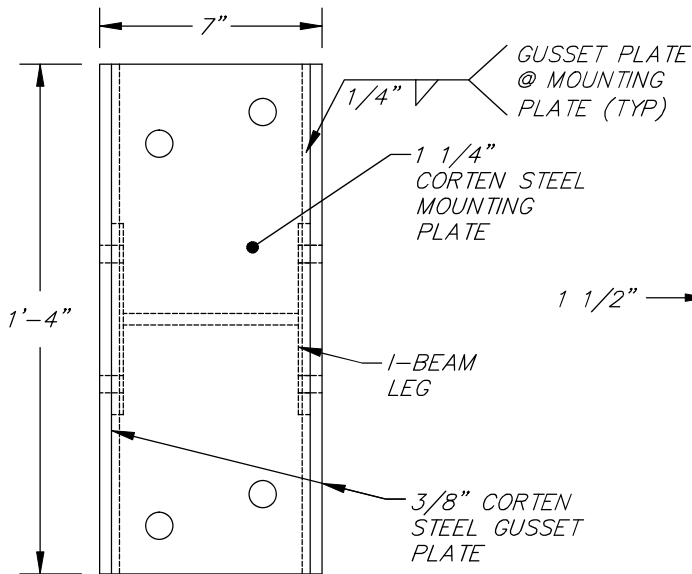
PUBLIC WORKS
DIRECTOR APPROVAL: _____

DATE: May 7, 2014

STANDARD PLAN

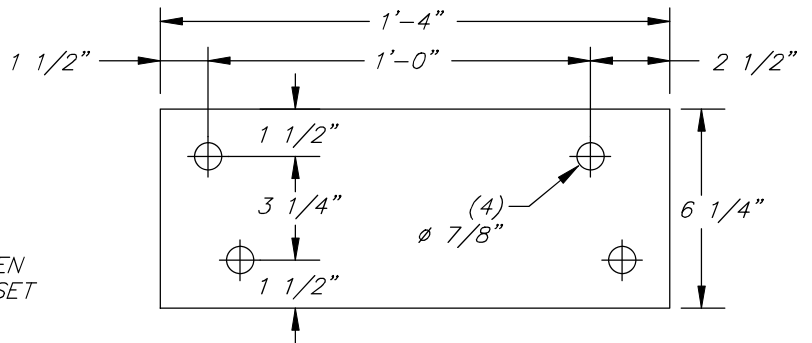
602-1

SHEET 3 of 15



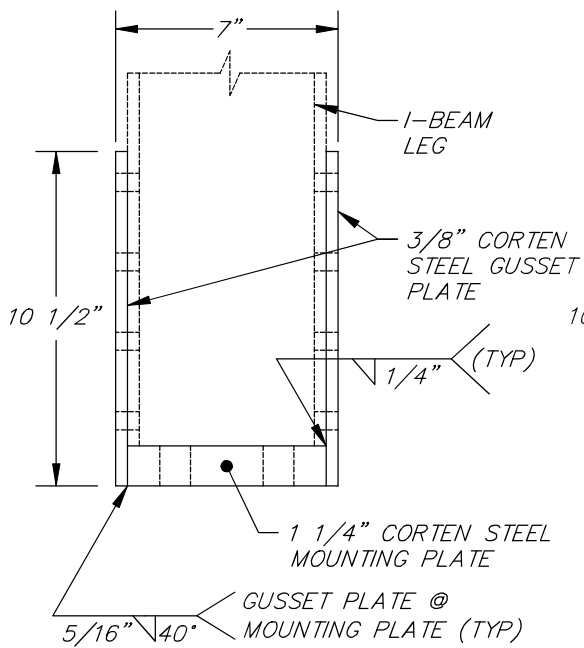
ASSEMBLED PLAN

N.T.S.



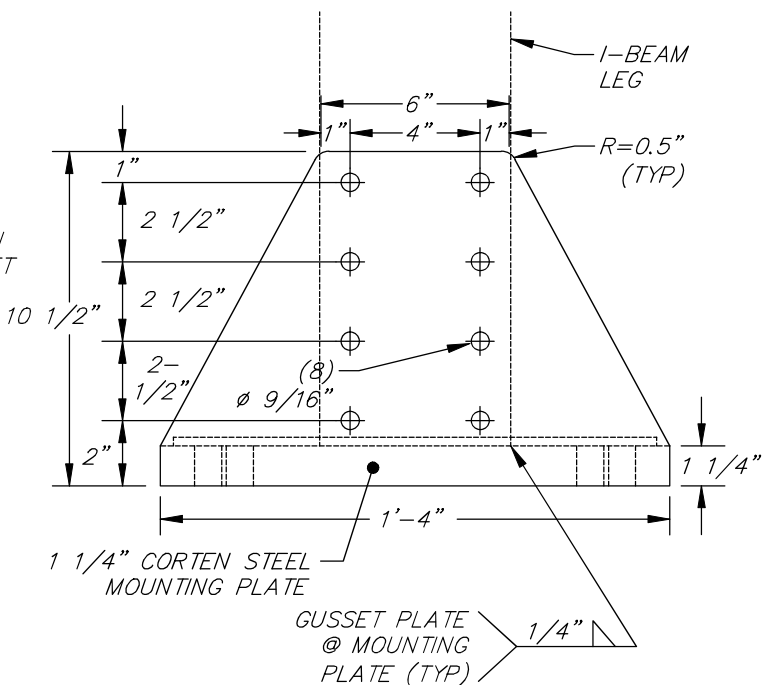
(ST-2) 1 1/4" STEEL MOUNTING PLATE

N.T.S.



ASSEMBLED FRONT VIEW

N.T.S.



(ST-2) STEEL GUSSET PLATE

N.T.S.

TOWN OF MAMMOTH LAKES - DEPARTMENT OF PUBLIC WORKS



SIGN TYPE 2 SUPPORT BRACKET

PUBLIC WORKS
DIRECTOR APPROVAL: 

DATE: May 7, 2014

STANDARD PLAN

602-1

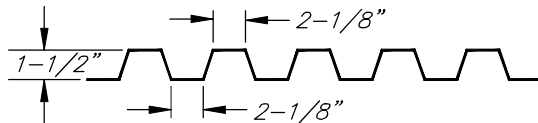
SHEET 4 of 15

○ CONSTRUCTION NOTES

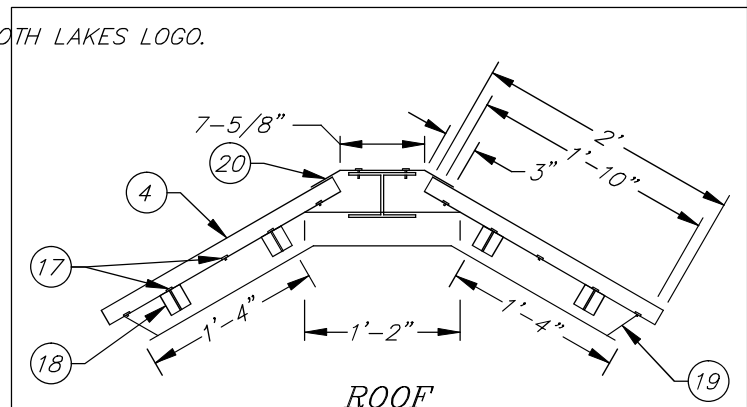
1. STRUCTURE – W-6" X 15 LBS CORTEN I-BEAM.
 2. SIGN FACES – 1/8" ALUMINUM OVER SIGNCOMP SIGN EXTRUSIONS SERIES 3 ACCESS BODY PART # 1290, BLEED COVER PART # 1692. PAINT BARRIER BETWEEN DISSIMILAR MATERIAL.
 3. BACK MAP – 1/8" THICK FIBERGLASS PANEL WITH IMBEDDED INK-JET GRAPHICS. PRINTED AT 600 DPI USING EXTERIOR UV INHIBITING INKS.
 4. ROOF – S-3" X 5.7 LBS I-BEAM WITH BOX BEAM CORRUGATED T-304 (16 GA.) GALVANIZED METAL ROOFING WITH MILL FINISH.
 5. GRAPHIC – COPY OVER PAINTED BACKGROUND.
 6. MAP – 1/8" THICK FIBERGLASS PANEL WITH IMBEDDED INK-JET GRAPHICS. PRINTED AT 600 DPI USING EXTERIOR UV INHIBITING INKS.
 7. MOUNTING BRACKET – 1/4" THICK CORTEN STEEL PLATE WITH 1/2" BLACK OXIDE BOLTS.
 8. POST SUPPORT BRACKET – 3/8" THICK STEEL SIDE GUSSETS WELDED TO 1 1/4" THICK STEEL MOUNTING PLATE.
 9. MOUNTING – 3/4" EPOXIED ANCHORS @ MIN 12" EMBEDMENT IN CONCRETE CAISSON AS REQUIRED.
 10. 6" MIN COMPACTED CLASS II BASE.
 11. 1" MIN WASHED SAND.
 12. INTER-LOCKING PAVERS.
 13. #3 TIES @ TOP 5", 3" MIN CLEAR, TYP.
 14. REMAINING #3 TIES @ 6" O.C., 3" MIN CLEAR, TYP.
 15. CONSOLIDATED CONCRETE, $f_c=3,000$ PSI
 16. #6 VERTICAL TIES, 3" MIN CLEAR, TYP.
 17. 1/4" HEX ACON STAINLESS STEEL BOLT, NUT, AND WASHER.
 18. ROOF CROSS SUPPORTS – 2"x2"x1/4" CORTEN STEEL SQUARE TUBE.
 19. ROOF SUPPORTS – 3"x3" CORTEN I-BEAM.
 20. 16 GAGE GALVANIZED ROOF CAP.
- LOGO – RECESSED DIGITAL PRINT. TOWN OF MAMMOTH LAKES LOGO.

○ COLOR SPECIFICATIONS

P-1	P.T.M. MAP #MP00857 BROWN W/ (SATIN) CLEAR COAT
P-2	P.T.M. MAP #MP0081 MAMMOTH LAKES TRAIL SYSTEM GREEN W/ (SATIN) CLEAR COAT
SF	STEEL FINISH = NATURAL FINISH



④ **ROOF**
N.T.S.




ROOF
N.T.S.

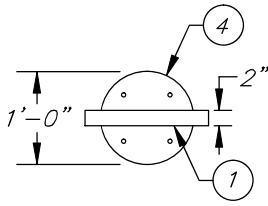
TOWN OF MAMMOTH LAKES - DEPARTMENT OF PUBLIC WORKS



SIGN TYPE 2
ROOF AND CONSTRUCTION NOTES

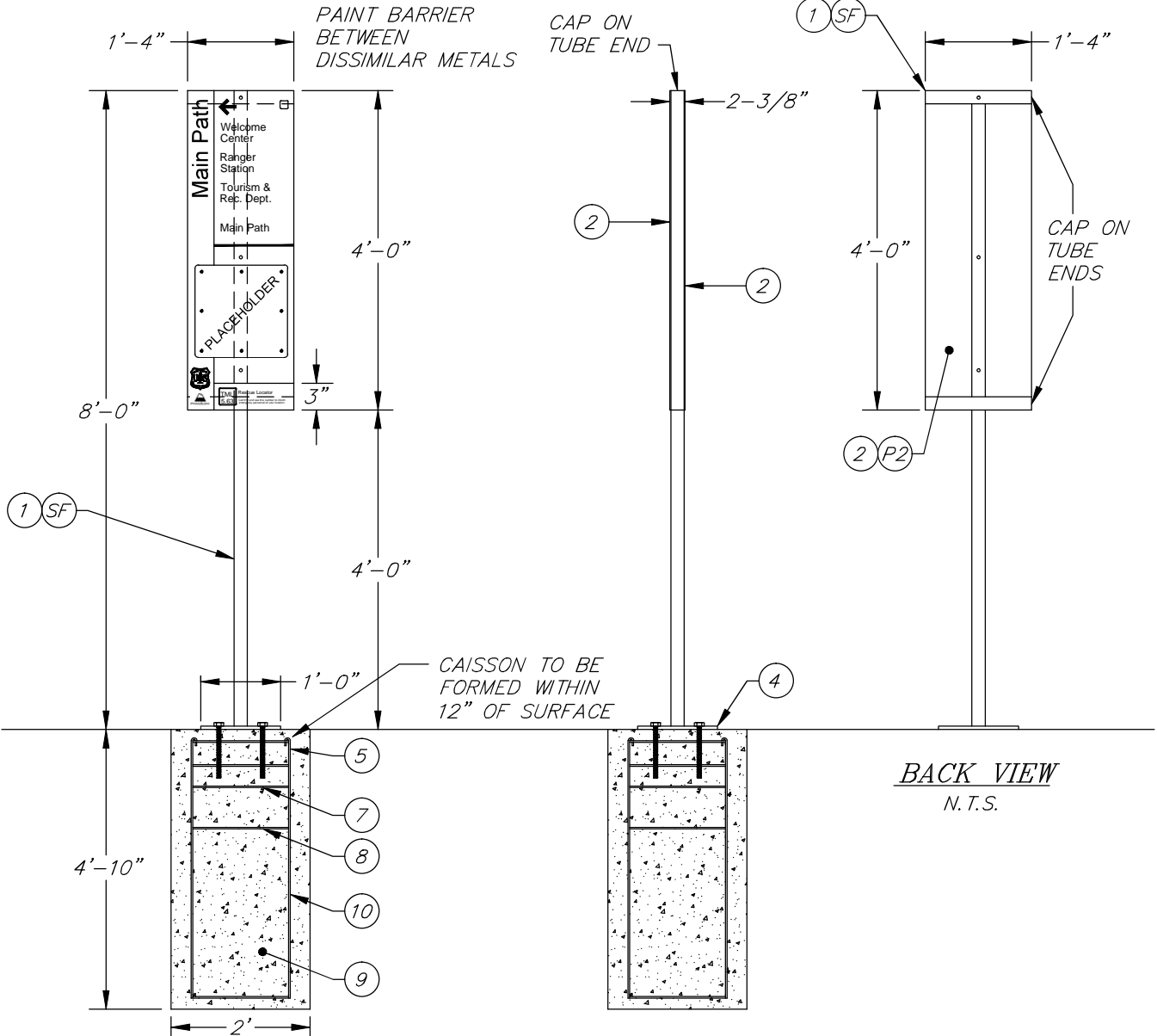
PUBLIC WORKS
DIRECTOR APPROVAL:  DATE: **May 7, 2014**

STANDARD PLAN
602-1
SHEET 5 of 15



PLAN VIEW

N. T. S.



FRONT VIEW

N. T. S.

SIDE VIEW

N. T. S.

BACK VIEW

N. T. S.

SEE SHEET 9 FOR
CONSTRUCTION NOTES

TOWN OF MAMMOTH LAKES - DEPARTMENT OF PUBLIC WORKS



SIGN TYPE 4/6

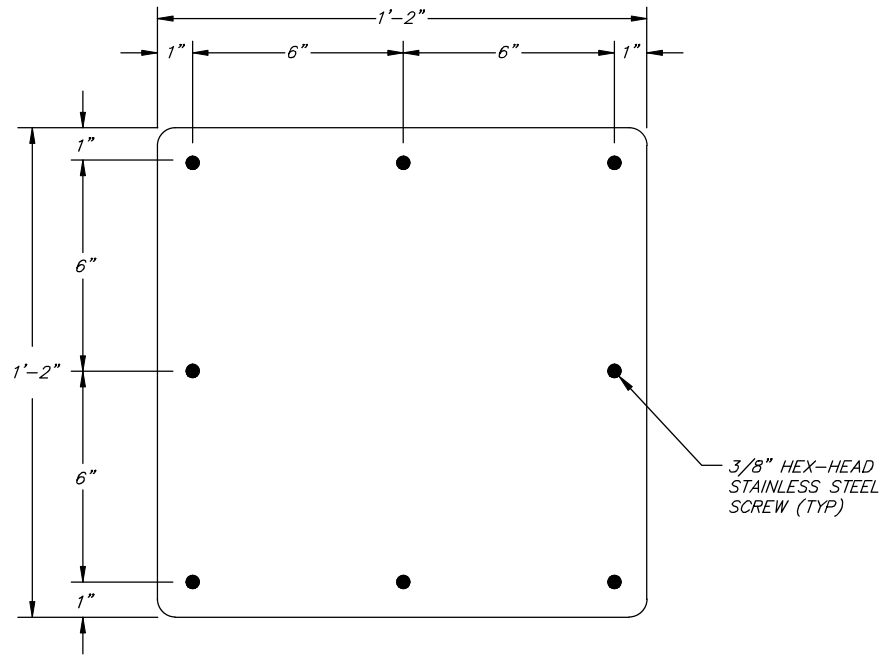
PUBLIC WORKS
DIRECTOR APPROVAL: *[Signature]*

DATE: **May 7, 2014**

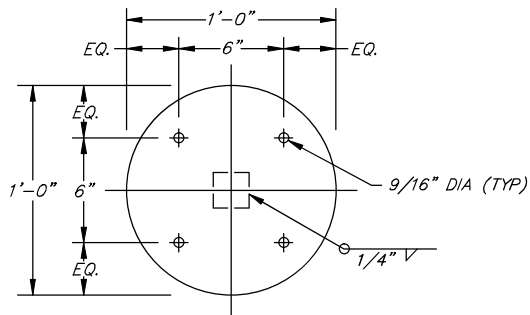
STANDARD PLAN

602-1

SHEET 6 of 15



MAP SCREW
HOLE PLACEMENT
N.T.S.



1/2" STEEL
MOUNTING PLATE
N.T.S.

SEE SHEET 9 FOR
CONSTRUCTION NOTES

TOWN OF MAMMOTH LAKES - DEPARTMENT OF PUBLIC WORKS



**SIGN TYPE 4/6 MAP SCREW HOLE
PLACEMENT AND MOUNTING PLATE**

PUBLIC WORKS

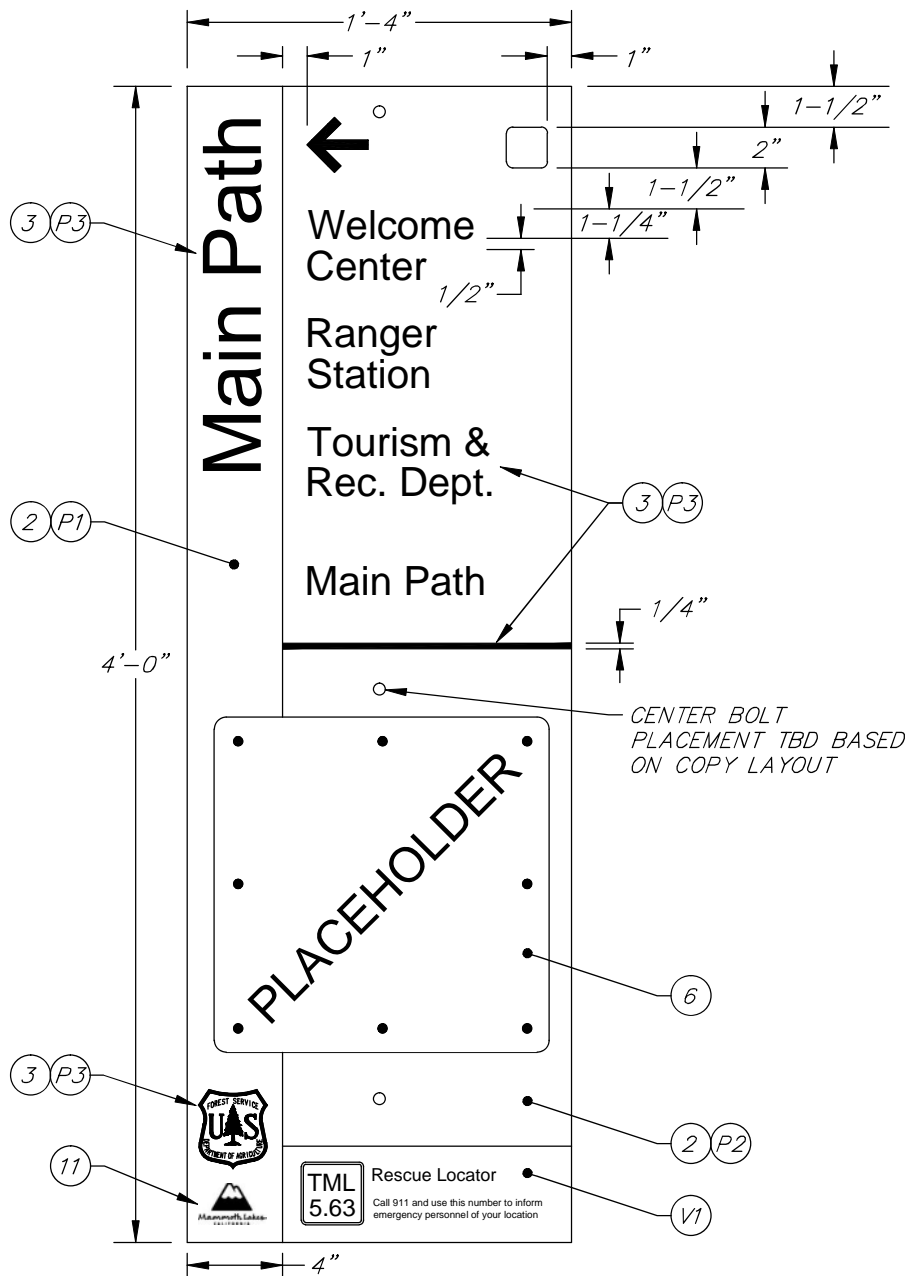
DIRECTOR APPROVAL: _____

DATE: **May 7, 2014**

STANDARD PLAN

602-1

SHEET 7 of 15



FRONT VIEW
N.T.S.

SEE SHEET 9 FOR
CONSTRUCTION NOTES

TOWN OF MAMMOTH LAKES - DEPARTMENT OF PUBLIC WORKS



SIGN TYPE 4/6 - EXAMPLE

PUBLIC WORKS
DIRECTOR APPROVAL: *[Signature]*

DATE: May 7, 2014

STANDARD PLAN

602-1

SHEET 8 of 15

CONSTRUCTION NOTES

1. POST AND FRAME – 2" X 2" X 3/16" CORTEN STEEL SQ. TUBE.
2. SIGN FACE – 3/16" ALUMINUM DRILLED AND TAPPED TO SQ. TUBE WITH 1/4"-20 SS TAMPER PROOF BOLTS PAINTED TO MATCH BACKGROUND. PAINT BARRIER BETWEEN DISSIMILAR METAL.
3. GRAPHIC – PAINTED COPY OVER PAINTED BACKGROUND.
4. SUPPORT PLATE – 1/2" THICK STEEL PLATE WELDED TO BOTTOM OF 2" X 2" X 3/16" CORTEN STEEL SQ. TUBE POST.
5. MOUNTING – 1/2" EPOXIED ANCHORS @ MIN 12" EMBEDMENT IN CONCRETE CAISSON AS REQUIRED.
6. MAP PANEL AND GRAPHICS – 14" X 14" THICK FIBERGLAS WITH IMBEDDED INK-JET GRAPHICS MOUNTED TO FACE WITH SS TAMPER RESISTANT HARDWARE. PAINTED AT 600 DPI USING EXTERIOR UV INHIBITING INKS. BY PANNIER GRAPHICS.
7. #3 TIES @ TOP 5", 3" MIN CLEAR, TYP.
8. REMAINING #3 TIES @ 6" O.C., 3" MIN CLEAR, TYP.
9. CONSOLIDATED CONCRETE, $f_c=3,000$ PSI
10. #6 VERTICAL TIES, 3" MIN CLEAR, TYP.
11. LOGO – RECESSED DIGITAL PRINT. TOWN OF MAMMOTH LAKES LOGO.

COLOR SPECIFICATIONS

- P-1 P.T.M. MAP #MP00857 BROWN W/ (SATIN) CLEAR COAT
- P-2 P.T.M. MAP #MP00811 (MAMMOTH LAKES TRAIL SYSTEM GREEN W/ (SATIN) CLEAR COAT
- P-3 P.T.M. MAP #MP11477 WHITE W/ (SATIN) CLEAR COAT
- V1 3M 7725-14 BRIGHT ORANGE W/ (SATIN) CLEAR COAT
- SF STEEL FINISH = NATURAL FINISH

TOWN OF MAMMOTH LAKES - DEPARTMENT OF PUBLIC WORKS



SIGN TYPE 4/6 - NOTES

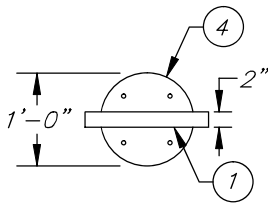
PUBLIC WORKS
DIRECTOR APPROVAL: _____

DATE: **May 7, 2014**

STANDARD PLAN

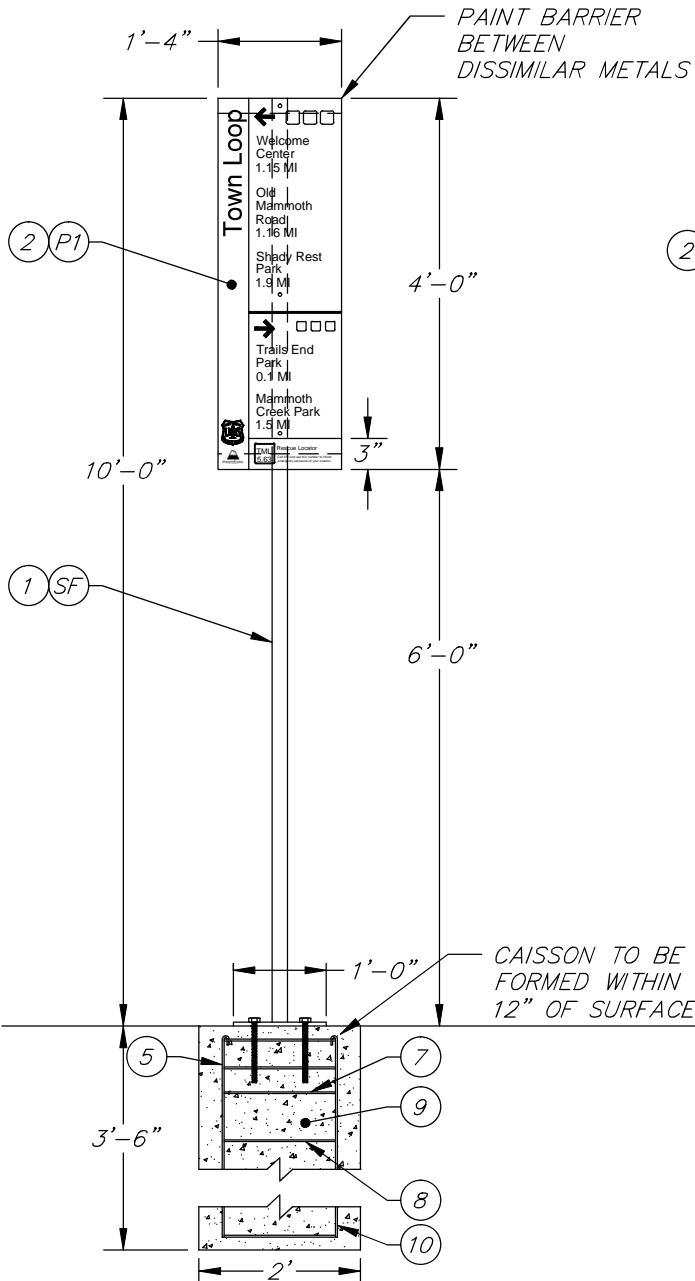
602-1

SHEET 9 of 15



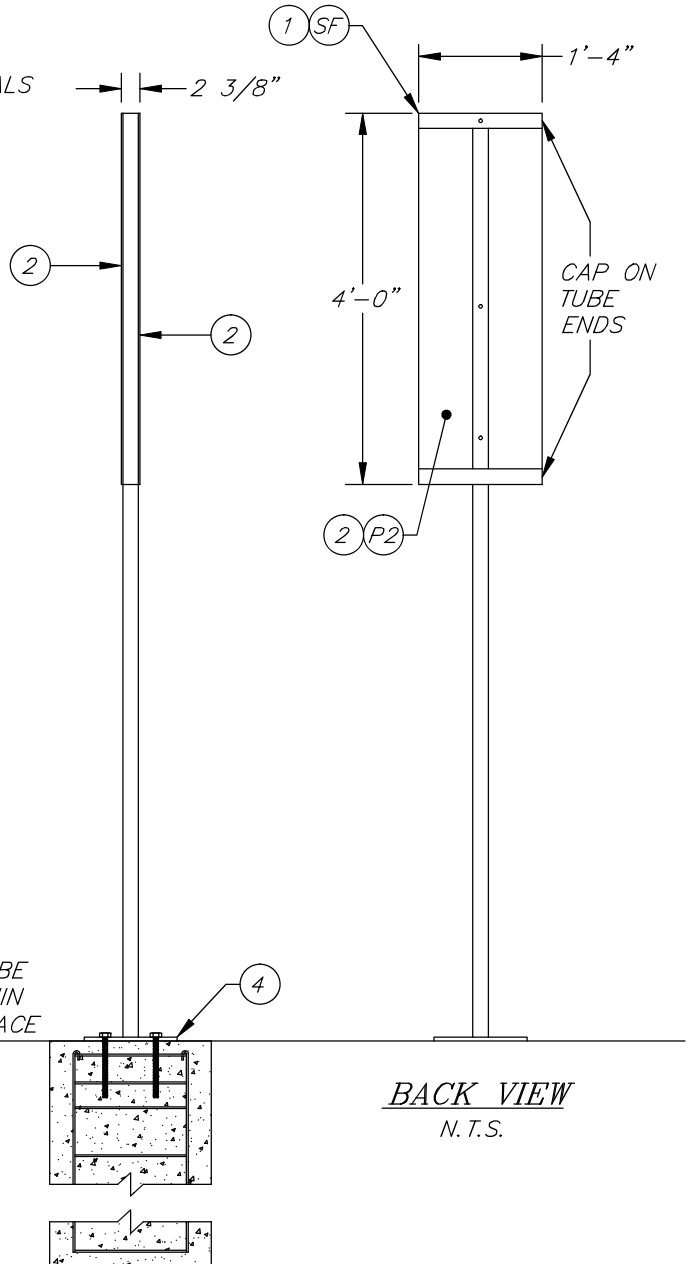
PLAN VIEW

N.T.S.



FRONT VIEW

N.T.S.



BACK VIEW

N.T.S.

SIDE VIEW

N.T.S.

SEE SHEET 12 FOR
CONSTRUCTION NOTES

TOWN OF MAMMOTH LAKES - DEPARTMENT OF PUBLIC WORKS



SIGN TYPE 6

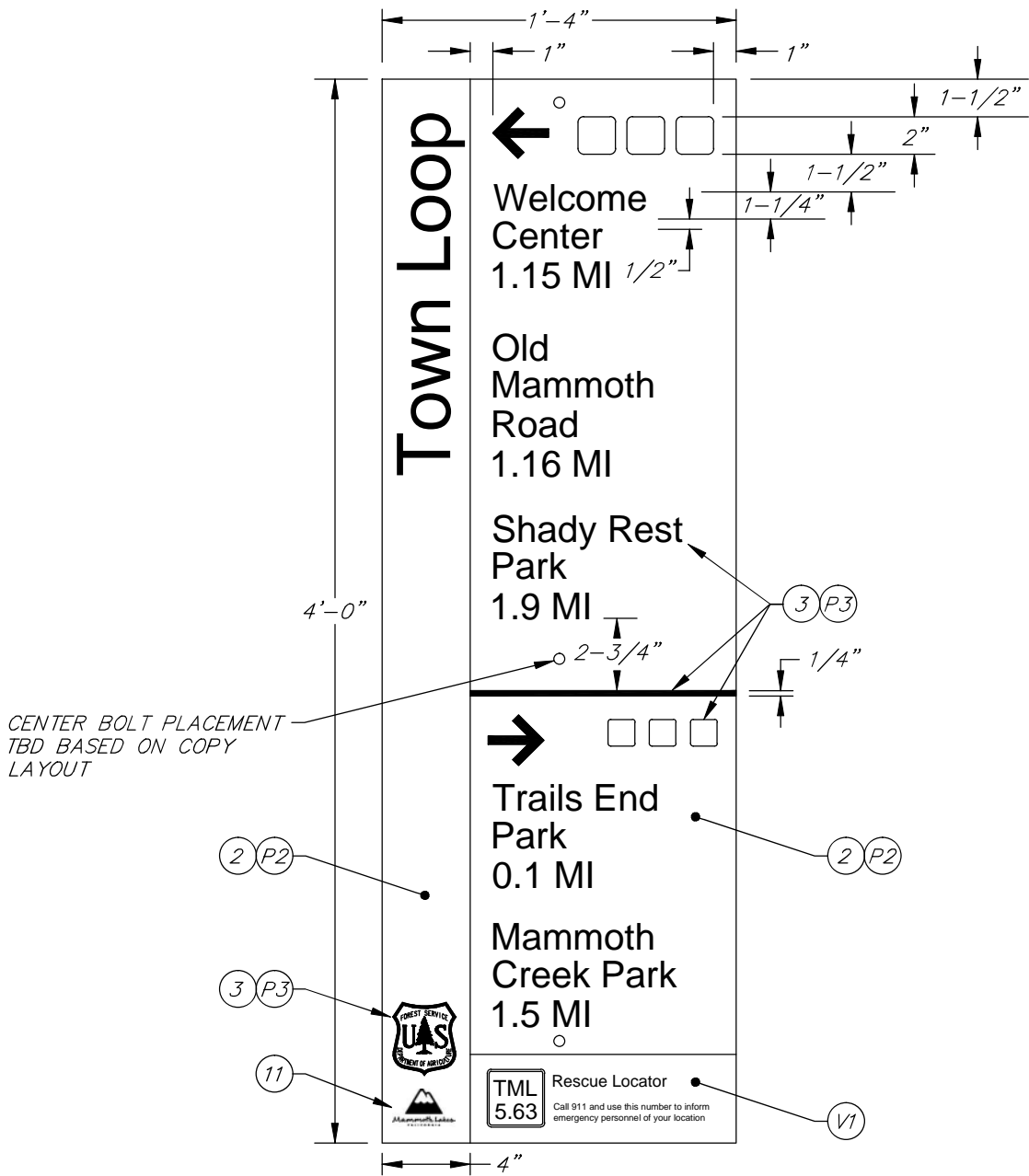
PUBLIC WORKS
DIRECTOR APPROVAL:

DATE: **May 7, 2014**

STANDARD PLAN

602-1

SHEET 10 of 15



FRONT VIEW
N.T.S.

SEE SHEET 12 FOR
CONSTRUCTION NOTES

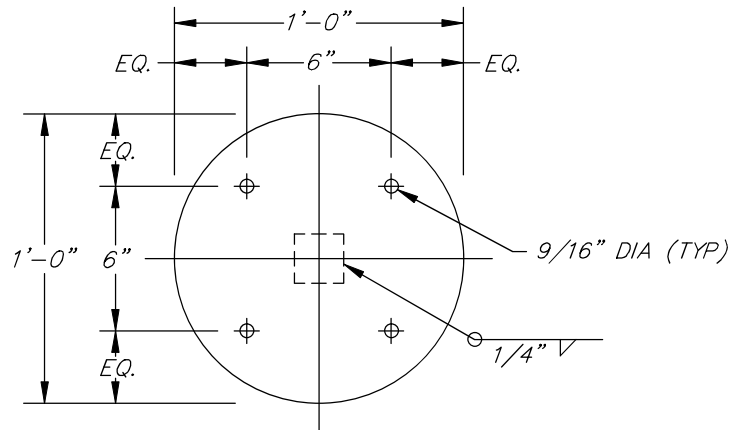
TOWN OF MAMMOTH LAKES - DEPARTMENT OF PUBLIC WORKS

CONSTRUCTION NOTES

1. POST AND FRAME – 2" X 2" X 3/16" CORTEN STEEL SQ. TUBE.
2. SIGN FACE – 3/16" ALUMINUM DRILLED AND TAPPED TO SQ. TUBE WITH 1/4"-20 SS TAMPER PROOF BOLTS PAINTED TO MATCH BACKGROUND. PAINT BARRIER BETWEEN DISSIMILAR METAL
3. GRAPHIC – PAINTED COPY OVER PAINTED BACKGROUND.
4. SUPPORT PLATE – 1/2" THICK STEEL PLATE WELDED TO BOTTOM OF 2" X 2" X 3/16" CORTEN STEEL SQ. TUBE POST.
5. MOUNTING – 1/2" EPOXIED ANCHORS @ MIN 12" EMBEDMENT IN CONCRETE CAISSON AS REQUIRED.
6. MAP PANEL AND GRAPHICS – 14" X 14" THICK FIBERGLAS WITH IMBEDDED INK-JET GRAPHICS MOUNTED TO FACE WITH SS TAMPER RESISTANT HARDWARE. PAINTED AT 600 DPI USING EXTERIOR UV INHIBITING INKS. BY PANNIER GRAPHICS.
7. #3 TIES @ TOP 5", 3" MIN CLEAR, TYP.
8. REMAINING #3 TIES @ 6" O.C., 3" MIN CLEAR, TYP.
9. CONSOLIDATED CONCRETE, $f_c=3,000$ PSI
10. #6 VERTICAL TIES, 3" MIN CLEAR, TYP.
11. LOGO – RECESSED DIGITAL PRINT. TOWN OF MAMMOTH LAKES LOGO.

COLOR SPECIFICATIONS

- P-1 P.T.M. MAP #MP00857 BROWN W/ (SATIN) CLEAR COAT
- P-2 P.T.M. MAP #MP00811 (MAMMOTH LAKES TRAIL SYSTEM GREEN W/ (SATIN) CLEAR COAT
- P-3 P.T.M. MAP #MP11477 WHITE W/ (SATIN) CLEAR COAT
- V1 3M 7725-14 BRIGHT ORANGE W/ (SATIN) CLEAR COAT
- SF STEEL FINISH = NATURAL FINISH



1/2" STEEL
MOUNTING PLATE
 N.T.S.

TOWN OF MAMMOTH LAKES - DEPARTMENT OF PUBLIC WORKS



SIGN TYPE 6 - NOTES

PUBLIC WORKS
 DIRECTOR APPROVAL: *[Signature]*

DATE: May 7, 2014

STANDARD PLAN

602-1

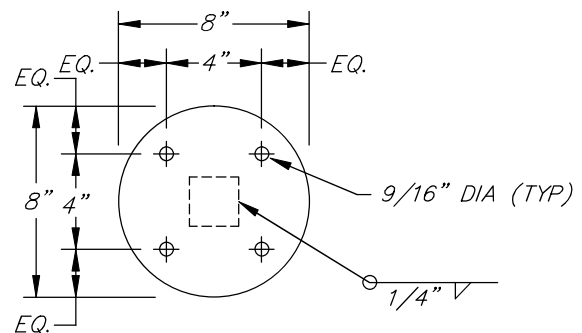
SHEET 12 OF 15

○ CONSTRUCTION NOTES

1. POST – 2" X 2" X 3/16" CORTEN STEEL SQ. TUBE.
2. SIGN FACE – 3/16" ALUMINUM FACES VERSALOK GLUED TO 1"X2"X18" ANGLE. ANGLE TO BE BOLTED TO STEEL SQ. TUBE POST WITH 1/4"-20 SS TAMPER PROOF BOLTS. BOLTS PAINTED TO MATCH BACKGROUND. PAINT BARRIER BETWEEN DISSIMILAR METAL.
3. GRAPHIC – PAINTED COPY OVER PAINTED BACKGROUND. MATTHEWS ACRYLIC POLY URATHANE PAINTED BACKGROUND, EDGES AND BACK. SURFACE MASKED AND SPRAYED TEXT AND GRAPHICS. SATIN CLEAR COAT TO BE APPLIED OVER BACKGROUND, TEXT AND GRAPHICS.
4. SUPPORT PLATE – 1/2" THICK STEEL PLATE WELDED TO BOTTOM OF 2" X 2" X 3/16" CORTEN STEEL SQ. TUBE POST.
5. MOUNTING – 1/2" EPOXIED ANCHORS @ MIN 12" EMBEDMENT IN CONCRETE CAISSON AS REQUIRED.
6. #3 TIES @ TOP 5", 3" MIN CLEAR, TYP.
7. REMAINING #3 TIES @ 6" O.C., 3" MIN CLEAR, TYP.
8. CONSOLIDATED CONCRETE, $f_c=3,000$ PSI
9. #6 VERTICAL TIES, 3" MIN CLEAR, TYP.
10. LOGO – RECESSED DIGITAL PRINT. TOWN OF MAMMOTH LAKES LOGO.

○ COLOR SPECIFICATIONS

- P-1 P.T.M. MAP #MP00857 BROWN W/ (SATIN) CLEAR COAT
- P-2 P.T.M. MAP #MP00811 (MAMMOTH LAKES TRAIL SYSTEM GREEN W/ (SATIN) CLEAR COAT
- P-3 P.T.M. MAP #MP11477 WHITE W/ (SATIN) CLEAR COAT
- V1 3M 7725-14 BRIGHT ORANGE W/ (SATIN) CLEAR COAT
- V2 3M 7125-10 WHITE W/ (SATIN) CLEAR COAT
- SF STEEL FINISH = NATURAL FINISH



1/2" STEEL
MOUNTING PLATE
 N.T.S.

TOWN OF MAMMOTH LAKES - DEPARTMENT OF PUBLIC WORKS



SIGN TYPE 6A - NOTES

PUBLIC WORKS
 DIRECTOR APPROVAL: *[Signature]*

DATE: May 7, 2014

STANDARD PLAN

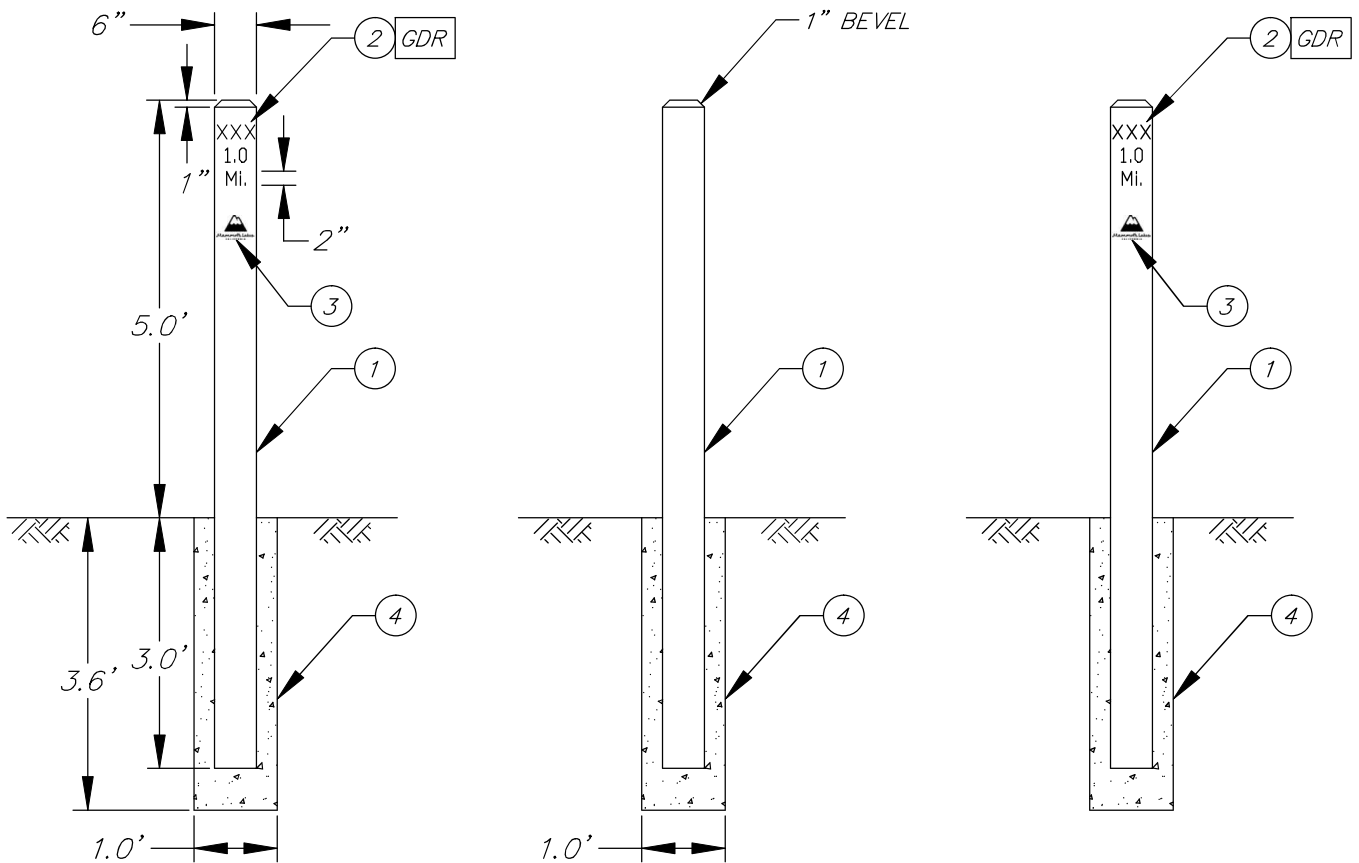
602-1

SHEET 14 OF 15

○ CONSTRUCTION NOTES

1. POST – 6"x6" BROWN RECYCLED PLASTIC POST.
(EVERLASTING LUMBER BY GREAT LAKES)
2. GRAPHIC – ENGRAVED AND FILLED WITH GLOW IN THE DARK EVERLASTING RESIN.
3. LOGO – RECESSED DIGITAL PRINT. TOWN OF MAMMOTH LAKES LOGO.
4. MOUNTING – DIRECT BURY INTO CONCRETE.

GDR GLOW IN THE DARK EVERLASTING RESIN



MILEAGE POST MARKER DETAIL
N.T.S.

TOWN OF MAMMOTH LAKES - DEPARTMENT OF PUBLIC WORKS



MILEPOST

PUBLIC WORKS
DIRECTOR APPROVAL: *[Signature]*

DATE: **May 7, 2014**

STANDARD PLAN

602-1

SHEET 15 OF 15



BIKE PATH
MUTCD W11-1
8"
LEGEND: BLACK
BACKGROUND: PANTONE YELLOW 116 (REFLECTIVE)



TRAIL X-ING
MUTCD W11-15
8"
LEGEND: BLACK
BACKGROUND: PANTONE YELLOW 116 (REFLECTIVE)



EQUESTRIAN
MUTCD W11-7
8"
LEGEND: BLACK
BACKGROUND: PANTONE YELLOW 116 (REFLECTIVE)



AHEAD
MUTCD R3-17aP
4" x 8"
LEGEND: BLACK
BACKGROUND: PANTONE YELLOW 116 (REFLECTIVE)



SLOW
4" x 8"
LEGEND: BLACK
BACKGROUND: PANTONE YELLOW 116 (REFLECTIVE)



SLOW
6" x 8"
LEGEND: BLACK
ARROW: WHITE
BACKGROUND: PANTONE BLUE ____ (REFLECTIVE)

TOWN OF MAMMOTH LAKES - DEPARTMENT OF PUBLIC WORKS



TYPE 8 SIGNS

PUBLIC WORKS
DIRECTOR APPROVAL: 

DATE: May 7, 2014

STANDARD PLAN

603-1

SHEET 1 OF 4



SPEED LIMIT
MUTCD W13-1
6" x 6"
LEGEND: BLACK
BACKGROUND: PANTONE YELLOW 116 (REFLECTIVE)

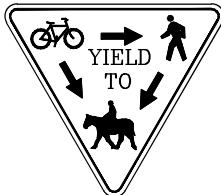


STOP SIGN
MUTCD R1-1
9"
LEGEND: WHITE REFLECTIVE
BACKGROUND: PANTONE RED 187 (REFLECTIVE)



W7-5

STEEP DOWNHILL GRADE
MUTCD W7-5
8"
LEGEND: BLACK
BACKGROUND: PANTONE YELLOW 116 (REFLECTIVE)



"YIELD TO" SIGN
SEE SECTION 607-1



YIELD SIGN
8"
LEGEND: BLACK
BACKGROUND: PANTONE YELLOW 116 (REFLECTIVE)

TOWN OF MAMMOTH LAKES - DEPARTMENT OF PUBLIC WORKS



TYPE 8 SIGNS

PUBLIC WORKS
DIRECTOR APPROVAL: 

DATE: May 7, 2014

STANDARD PLAN

603-1

SHEET 2 OF 4



R5-6

NO BIKES
MUTCD R5-6
5" x 5"
LEGEND: BLACK AND PANTONE RED 187
BACKGROUND: WHITE



RL-090

BICYCLE TRAIL
MUTCD RL-090
5" x 5"
LEGEND: WHITE REFLECTIVE
BACKGROUND: PANTONE BROWN 469



RL-100

HIKING TRAIL
MUTCD RL-100
5" x 5"
LEGEND: WHITE REFLECTIVE
BACKGROUND: PANTONE BROWN 469



R4-7a

KEEP RIGHT
MUTCD R4-7a
5" x 8"
LEGEND: BLACK
BACKGROUND: WHITE REFLECTIVE

TOWN OF MAMMOTH LAKES - DEPARTMENT OF PUBLIC WORKS



TYPE 8 SIGNS

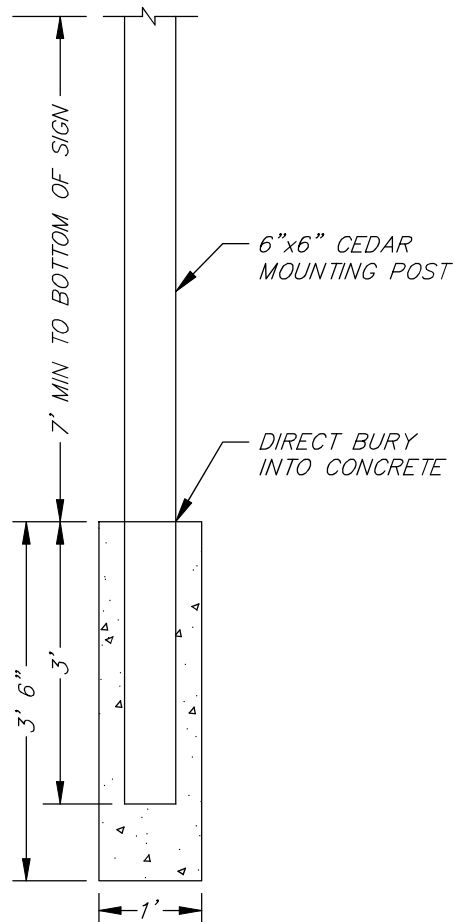
PUBLIC WORKS
DIRECTOR APPROVAL: 

DATE: May 7, 2014

STANDARD PLAN

603-1

SHEET 3 OF 4



TOWN OF MAMMOTH LAKES - DEPARTMENT OF PUBLIC WORKS



**SIGN TYPE 8
TYPICAL POST**

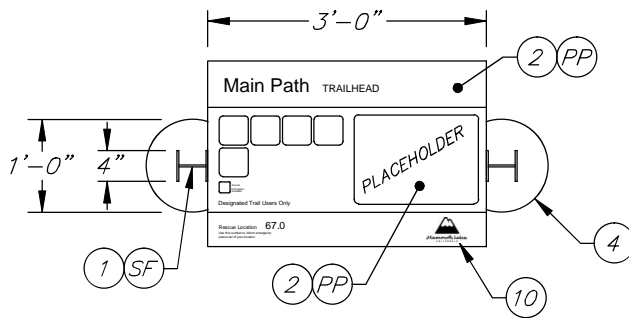
PUBLIC WORKS
DIRECTOR APPROVAL: 

DATE: May 7, 2014

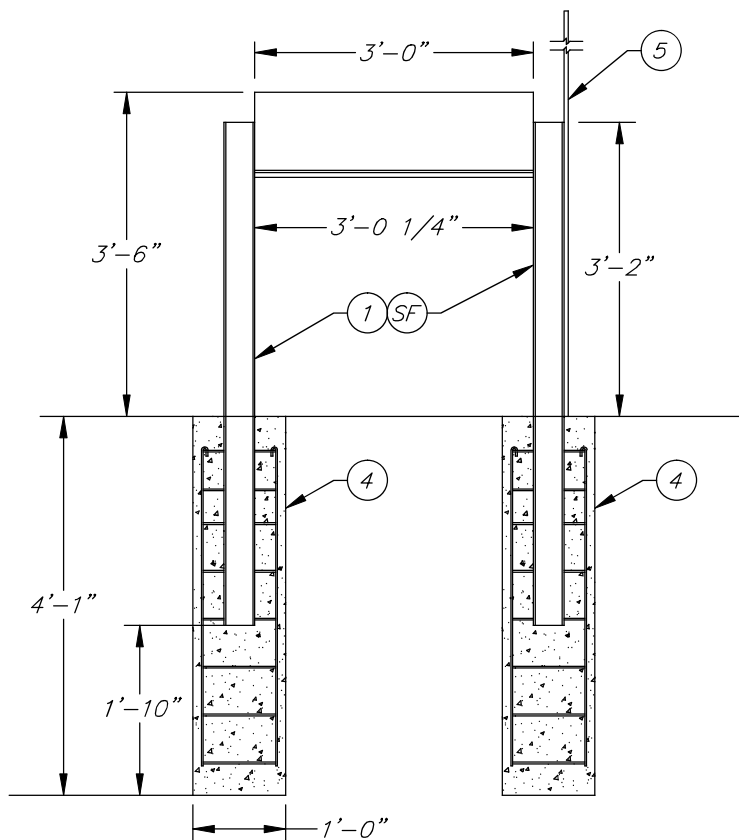
STANDARD PLAN

603-1

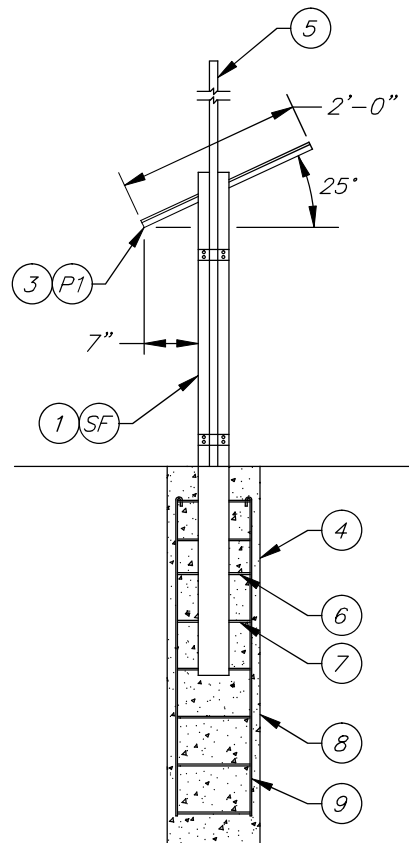
SHEET 4 OF 4



PLAN VIEW
N. T. S.



FRONT VIEW
N. T. S.



SIDE VIEW
N. T. S.

SEE SHEET 2 FOR
CONSTRUCTION NOTES

TOWN OF MAMMOTH LAKES - DEPARTMENT OF PUBLIC WORKS



SIGN TYPE 7

PUBLIC WORKS
DIRECTOR APPROVAL: *[Signature]*

DATE: **May 7, 2014**

STANDARD PLAN

604-1

SHEET 1 OF 2

CONSTRUCTION NOTES

1. STRUCTURE – W-4" X 13 LDS CORTEN STEEL I-BEAM.
2. FACE – 3/4" THICK PHENOLIC GRAPHIC PANEL WITH THREADED INSERTS TO FASTEN ALUMINUM FRAME.
3. FRAME – 1-1/2" X 1-1/2" X 1/4" CORTEN STEEL ANGLE FRAME BACKED BY 1-1/2" X 1-1/2" X 1/4" CORTEN STEEL SQ TUBE.
4. MOUNTING – DIRECT BURY IN CONCRETE CAISSON.
5. SNOW POLE – 144" LONG SNOW POLE MOUNTED TO THE SIDE CLOSEST TO THE ROAD.
6. #3 TIES @ TOP 5", 3" MIN CLEAR, TYP.
7. REMAINING #3 TIES @ 6" O.C., 3" MIN CLEAR, TYP.
8. CONSOLIDATED CONCRETE, $f_c=3,000$ PSI
9. #6 VERTICAL TIES, 3" MIN CLEAR, TYP.
10. LOGO – RECESSED DIGITAL PRINT. TOWN OF MAMMOTH LAKES LOGO.

COLOR SPECIFICATIONS

- P-1 P.T.M. MAP #MP00857 BROWN W/ (SATIN) CLEAR COAT
- PP PHENOLIC PANEL
- SF STEEL FINISH = NATURAL FINISH

TOWN OF MAMMOTH LAKES - DEPARTMENT OF PUBLIC WORKS



SIGN TYPE 7 - NOTES

PUBLIC WORKS
DIRECTOR APPROVAL: _____

DATE: May 7, 2014

STANDARD PLAN

604-1

SHEET 2 OF 2

GRAPHIC CONVENTIONS COLOR STANDARDS

THIS SECTION PROVIDES THE COLOR SPECIFICATIONS THAT SHALL BE EMPLOYED
THROUGHOUT THE MAMMOTH LAKES TRAIL SYSTEM.

MLTS BROWN
CMYK: 30, 72, 74, 80
RGB: 62, 23 7

MLTS GREEN
CMYK: 19, 0, 86, 48
RGB: 126, 135, 42

MLTS ORANGE
CMYK: 0, 78, 97, 0
RGB: 241, 95, 38

MLTS GOLD
CMYK: 13, 51, 100, 1
RGB: 217, 138, 39

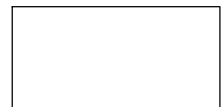
COLOR PALETTE



01 GOLD



02 MAMMOTH LAKES
TRAIL SYSTEM



04 WHITE

PANTONE MATCHING SYSTEM

MATTHEWS PAINT

HIGH PERFORMANCE OPAQUE VINYL

ENGINEER GRADE REFLECTIVE SHEETING

MP06916

MP00811

MP11477

3M WHITE 7125-10

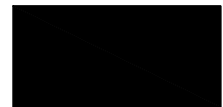
WHITE 3290



05 BROWN



07 RED



08 YELLOW

PANTONE MATCHING SYSTEM

MATTHEWS PAINT

HIGH PERFORMANCE OPAQUE VINYL

ENGINEER GRADE REFLECTIVE SHEETING

MP00857

3M RED 3272

3M SUNFLOWER 7725-25

3M YELLOW 3271



09 BLACK



10 ORANGE

PANTONE MATCHING SYSTEM

MATTHEWS PAINT

HIGH PERFORMANCE OPAQUE VINYL

ENGINEER GRADE REFLECTIVE SHEETING

3M BLACK 7725-12

3M BRIGHT ORANGE 7725-14

TOWN OF MAMMOTH LAKES - DEPARTMENT OF PUBLIC WORKS



GRAPHIC CONVENTIONS COLOR STANDARDS

PUBLIC WORKS

DIRECTOR APPROVAL:

DATE: May 7, 2014

STANDARD PLAN

605-1

SHEET 1 OF 1

GRAPHIC CONVENTIONS SYMBOLOLOGY

THIS SECTION PROVIDES THE STANDARD SET OF SYMBOLS, FONTS, AND LOGOS THAT SHALL BE EMPLOYED THROUGHOUT THE MAMMOTH LAKES TRAIL SYSTEM.

SYSTEM SYMBOLS



HIKING
(HIKE)



DOGS ON
LEASH
(DOG)



CYCLING
(BIKE)



HOSPITAL
(HOSP)



RESTROOMS
(REST)



PICNIC AREA
(PIC)



PUBLIC
PARKING
(PARK)



TRANSPORTATION
(TRANSIT)



DRINKING
WATER
(WATER)



USFS
CAMPGROUND
(CAMP)



INFORMATION
(INFO)



PACK
STATION
(PACK)



PLAYGROUND
(PLAY)



SKATEBOARD
(SKATE)



MUSEUM
(MUSEUM)



LIBRARY (LIB)



SCHOOL
(SCH)



POINT OF
INTEREST
(POI)



LODGING
(LODGE)



FOOD SERVICES
(FOOD)

SOURCE: NATIONAL PARK SERVICE UNIHUDE PROGRAM: SEGD NATIONAL RECREATION SYMBOLS.

TOWN OF MAMMOTH LAKES - DEPARTMENT OF PUBLIC WORKS



GRAPHIC CONVENTIONS SYMBOLOLOGY

PUBLIC WORKS
DIRECTOR APPROVAL: 

DATE: May 7, 2014

STANDARD PLAN

606-1

SHEET 1 OF 3

SYSTEM ARROWS



SYSTEM TYPOGRAPHY

CENTURY GOTHIC BOLD

Aa Bb Cc Dd Ee Ff Gg Hh Ii Jj Kk Ll Mm Nn Oo Pp Qq Rr Ss Tt Uu Vv Ww Xx Yy Zz 0 1 2 3 4 5 6 7 8 9 0

CENTURY GOTHIC REGULAR

Aa Bb Cc Dd Ee Ff Gg Hh Ii Jj Kk Ll Mm Nn Oo Pp Qq Rr Ss Tt Uu Vv Ww Xx Yy Zz 0 1 2 3 4 5 6 7 8 9 0

CLEARVIEW HIGHWAY 1B

Aa Bb Cc Dd Ee Ff Gg Hh Ii Jj Kk Ll Mm Nn Oo Pp Qq Rr Ss Tt Uu Vv Ww Xx Yy Zz 0 1 2 3 4 5 6 7 8 9 0

SYSTEM LOGOS



MAMMOTH LAKES TRAIL SYSTEM LOGO GUIDELINES

PROPER APPLICATION OF THE MAMMOTH LAKES TRAIL SYSTEM™ LOGO IS ESSENTIAL FOR PROMOTING AND PROTECTING THE BRAND. IT IS OUR GOAL TO BE CONSISTENT IN ORDER TO ACHIEVE MAXIMUM RECOGNITION.

THERE ARE FOUR DIFFERENT VARIATIONS OF THE LOGO:

- A FOUR-COLOR (4C) PREFERRED LOGO
- A FOUR-COLOR (4C) LOGO TO BE USED FOR SPECIFIC PURPOSES
- A GREY SCALE (60% BLACK) LOGO
- A BLACK (100% BLACK) LOGO



IS IT RECOMMENDED THAT THE STANDARD COLOR LOGO BE USED ONLY ON A WHITE OR GREY BACKGROUND. FILE NAME: MLTS_V1_4C




IS IT RECOMMENDED THAT THE SPECIAL COLOR LOGO BE USED ONLY FOR WAYFINDING AND SIGNAGE PURPOSES. FILE NAME: MLTS_V2_4C

TOWN OF MAMMOTH LAKES - DEPARTMENT OF PUBLIC WORKS



GRAPHIC CONVENTIONS SYMBOLGY

PUBLIC WORKS
DIRECTOR APPROVAL: 

DATE: May 7, 2014

STANDARD PLAN

606-1

SHEET 2 OF 3



IS IT RECOMMENDED THAT THE GREY LOGO BE USED ONLY IF THE BACKGROUND ONTO WHICH IT WILL BE APPLIED IS BLACK. THIS IS NOT A PREFERRED APPLICATION. FILE NAME: MLTS_V3_WHT



IS IT RECOMMENDED THAT THE BLACK ON WHITE LOGO BE USED ONLY ON COLORED BACKGROUNDS. FILE NAME: MLTS_V4_BLK

EXPOSURE RESTRICTIONS

THE MAMMOTH LAKES TRAIL SYSTEM™ LOGO IS DESIGNED FOR SPECIFIC USES TO MAINTAIN CONSISTENCY AND THE INTEGRITY OF THE BRAND. IT IS RECOMMENDED THAT THE LOGO BE USED WITHOUT MAKING MODIFICATIONS OR ALTERATIONS TO THE GRAPHIC. FOR EXAMPLE, CHANGING THE LOGO'S ORIENTATION, APPLYING AFFECTS, OR ROTATING THE LOGO ARE NOT RECOMMENDED.

THE TYPE AND THE ICON WORK TOGETHER AS A COMPOSITE GRAPHIC (THE LOGO) AND SHOULD ALWAYS BE REPRESENTED AS ONE ELEMENT.
THE ICON SHOULD REMAIN CENTERED ABOVE THE TYPE.
THE PROPORTIONS OF THE TWO ELEMENTS (ICON AND TYPE) SHOULD NOT BE MODIFIED.
THE LOGO SHOULD BE USED WITH A "TM" SYMBOL.

TYPOGRAPHY

MAMMOTH LAKES TRAIL SYSTEM

CENTURY GOTHIC REGULAR
OUTLINE STROKE WEIGHT: 0.0048 INCHES

COLOR VERSION:

"MAMMOTH LAKES"
ORANGE
PANTONE
CMYK 0, 78, 97, 0
RGB 241, 95, 38

BLACK AND WHITE VERSION:

TRAIL SYSTEM
BLACK
PANTONE
CMYK 0, 0, 0, 100
RGB 35, 31, 32

TOWN OF MAMMOTH LAKES - DEPARTMENT OF PUBLIC WORKS



GRAPHIC CONVENTIONS LOGO GUIDELINES

PUBLIC WORKS
DIRECTOR APPROVAL: 

DATE: May 7, 2014

STANDARD PLAN

606-1

SHEET 3 OF 3

**GRAPHIC CONVENTIONS
MAPPING CONVENTIONS**

THIS SECTION DESCRIBES THE SPECIFICATIONS FOR THE DESIGN OF THE SIGNAGE AND
WAYFINDING MAPS USED THROUGHOUT THE MAMMOTH LAKES TRAIL SYSTEM.

TOWN OF MAMMOTH LAKES - DEPARTMENT OF PUBLIC WORKS



MAPPING CONVENTIONS

PUBLIC WORKS
DIRECTOR APPROVAL: _____

DATE: **May 7, 2014**

STANDARD PLAN

607-1

SHEET 1 OF 8

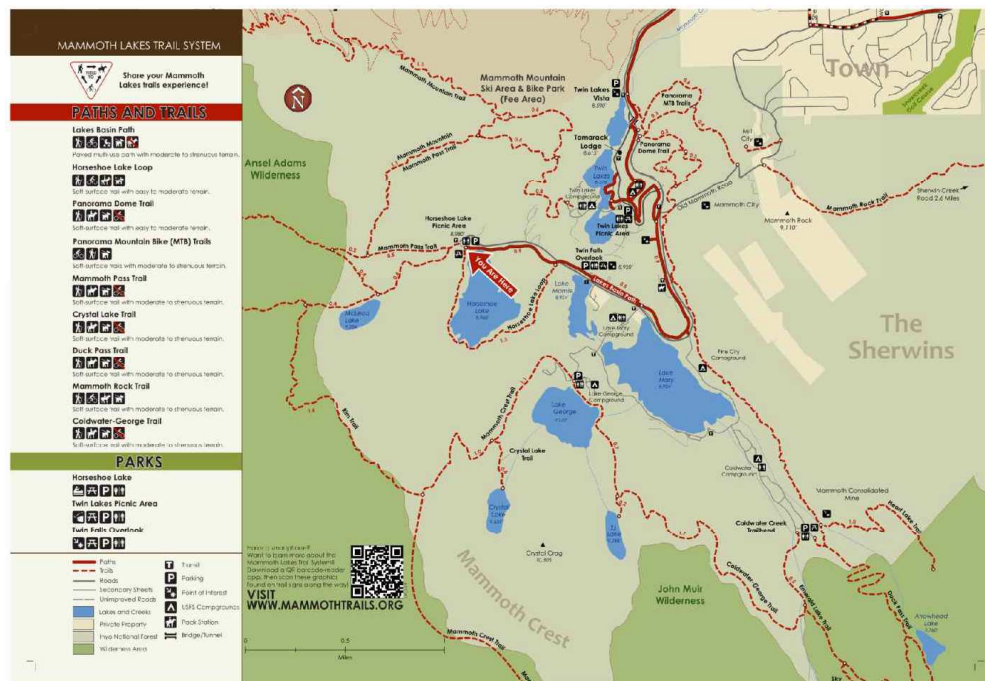
TYPE 2 FRONT-SIDE MAP

THE FRONT-SIDE MAPS ARE DISPLAYED ACCORDING TO SUB-REGIONS OF THE MAMMOTH LAKES TRAIL SYSTEM.

TOWN SUB-REGION EXAMPLE



LAKES BASIN SUB-REGION EXAMPLE



TOWN OF MAMMOTH LAKES - DEPARTMENT OF PUBLIC WORKS

GRAPHIC CONVENTIONS TYPE 2 FRONT SIDE MAP

STANDARD PLAN

607-1

SHEET 2 OF 8

PUBLIC WORKS
DIRECTOR APPROVAL:

DATE: May 7, 2014





TRAIL SYSTEM TITLE

BROWN BAR SPECS

DIMENSIONS: 5.6806 IN x 0.6964 IN

COLOR: RGB 77, 49, 20, BROWN

FONT: 25 POINT CENTURY GOTHIC REGULAR,
TITLE CASE, TRACK 100, WHITE

"YIELD TO" GRAPHIC

DIMENSIONS: 1.5718 IN x 1.3467 IN (TRIANGLE)

COLOR:

BACKGROUND: RGB 255, 254, 247, OFF-WHITE

PINSTRIP STROKE: RGB 178, 32, 36, RED

GRAPHICS: HIKE, BIKE, HORSE, BLACK

FONT: 18 POINT CENTURY GOTHIC BOLD, TITLE CASE,
TRACK 100, BLACK

PATHS AND TRAILS HEADING

DIMENSIONS: 5.6528 IN x 0.5402 IN

COLOR: RGB 179, 25, 0, RED

FONT: 36 POINT CENTURY GOTHIC BOLD, TITLE CASE,
TRACK 100, BLACK

LEGEND ENTRY

PATHS AND TRAILS NAMES

FONT: 18 POINT CENTURY GOTHIC REGULAR,
TITLE CASE, TRACK 100, BLACK

TEXT BELOW TRAIL NAME

FONT: 14 POINT CENTURY GOTHIC REGULAR,
TITLE CASE, TRACK 100, BLACK

SYMBOL SPECIFICATIONS:

DIMENSIONS: 0.3811 IN x 0.3811 IN

COLOR: BACKGROUND BLACK, GRAPHIC WHITE

REGULATORY SYMBOL

DIMENSIONS: 0.3811 IN x 0.3811 IN

COLOR: BACKGROUND BLACK, GRAPHIC WHITE
PINSTRIP STROKE: RGB 179, 25, 0, RED

PARKS HEADING

DIMENSIONS: 5.6528 IN x 0.5402 IN

COLOR: RGB 138, 157, 63, GREEN

FONT: 36 POINT CENTURY GOTHIC BOLD, TITLE CASE,
TRACK 100, BLACK

PARK NAMES

FONT: 18 POINT CENTURY GOTHIC BOLD,
TRACK 100, BLACK

LEGEND WITH SYMBOLOGY

CMYK COLOR SWATCHES:

PATHS: RGB 179, 25, 0

TRAILS: RGB 179, 25, 0

PLANNED, UNDER CONSTRUCTION:

RED: RGB 179, 25, 0

TAN: RGB 237, 236, 207


BLACK

TOWN OF MAMMOTH LAKES - DEPARTMENT OF PUBLIC WORKS



GRAPHIC CONVENTIONS TYPE 2 FRONT SIDE MAP LEGEND AND DESCRIPTIONS

PUBLIC WORKS

DIRECTOR APPROVAL: 

DATE: May 7, 2014

STANDARD PLAN

607-1

SHEET 3 OF 8

ROADS AND HIGHWAYS: RGB 105, 105, 105
ON-STREET BIKE LANES:
GREY: 105, 105, 105
BLUE: RGB 0, 146, 215
SECONDARY STREETS: RGB 130, 130, 130
LAKES AND STREAMS: RGB 101, 152, 204
PARKS: RGB 138, 157, 163
PRIVATE PROPERTY: RGB 239, 229, 198
INYO NATIONAL FOREST: RGB 210, 212, 182

SYMBOL SPECIFICATIONS
DIMENSIONS: 0.3811IN x 0.3811 IN
COLOR: BACKGROUND BLACK, GRAPHIC WHITE

BORDERS AND PINLINE STROKES

VERTICAL PINLINE STROKES: SEPARATES LEGEND FROM MAP
COLOR: RGB 77, 49, 20, BROWN
STROKE LINE WEIGHT: 2 PT
BACKGROUND
COLOR: RGB 248, 247, 236, OFF-WHITE

MAP TEXT

PATHS AND TRAIL NAMES
FONT: 14 POINT CENTURY GOTHIC BOLD, TITLE CASE, TRACK 100, BLACK
ROAD AND STREET NAMES
FONT: 14 POINT CENTURY GOTHIC REGULAR, TITLE CASE, TRACK 100, BLACK
PARK NAMES
FONT: 18 POINT CENTURY GOTHIC BOLD, TITLE CASE, TRACK 100, BLACK
POINT OF INTEREST NAMES
FONT: 14 POINT CENTURY GOTHIC BOLD, TITLE CASE, TRACK 100, BLACK
RECREATION NODES
FONT: 16 POINT CENTURY GOTHIC BOLD, TITLE CASE, TRACK 100, BLACK
CAMPGROUNDS
FONT: 12 POINT CENTURY GOTHIC REGULAR, TITLE CASE, TRACK 100, BLACK
ELEVATIONS
FONT: 12 POINT CENTURY GOTHIC ITALIC, TITLE CASE, TRACK 100, BLACK

MAP ENTRIES

RECREATION SYMBOL
FONT: 18 POINT CENTURY GOTHIC REGULAR, TITLE CASE, TRACK 100, BLACK
PEAKS:
18 POINT TRIANGLE, BLACK
TRAILS AND PATHS
COLOR: RGB 179, 25, 0, RED
SYSTEM TRAILS
COLOR: RGB 179, 25, 0, RED
4 POINT DASHED
MAMMOTH MOUNTAIN SKI AREA BIKE PARK TRAILS:
COLOR: CMYK 30, 90, 100, 0, BROWN
1.5 DOTTED
MULTI USE PATHS (MUPS)
COLOR: BLACK WITH RED ON TOP (ROUNDED)
6.4 POINT

TOWN OF MAMMOTH LAKES - DEPARTMENT OF PUBLIC WORKS



GRAPHIC CONVENTIONS TYPE 2 FRONT SIDE MAP DESCRIPTIONS

PUBLIC WORKS

DIRECTOR APPROVAL: _____

DATE: May 7, 2014

STANDARD PLAN

607-1

SHEET 4 OF 8

NATURAL FEATURES

CREEKS

FONT: 14 POINT CENTURY GOTHIC REGULAR, ITALIC, TITLE CASE, TRACK 100
COLOR: RGB 101, 152, 204, BLUE
LINE WEIGHT: 0.0278 IN

LAKES

FONT: 14 POINT CENTURY GOTHIC REGULAR, ITALIC, TITLE CASE, TRACK 100
COLOR: RGB 101, 152, 204, BLUE
FILL COLOR: CMYK 30, 6, 7, 0

MAP GRAPHICS

SEE BACK FOR LARGER MAP - HEADING

FONT: 30 CENTURY GOTHIC BOLD, TITLE CASE, TRACK 100, BLACK

YOU ARE HERE, WITH ARROW - HEADING

THIS IS A FIXED GRAPHIC CREATED IN ADOBE ILLUSTRATOR. THIS GRAPHIC REMAINS THE SAME SIZE AND COLOR ON ALL MAPS.

ARROW COLOR: RGB 179, 20, 0, RED WITH 3 POINT WHITE STROKE AROUND THE OUTSIDE OF THE ARROW.

FONT: 18 POINT CENTURY GOTHIC BOLD, TITLE CASE, TRACK 100, WHITE

TOWN LOOP - HEADING

THE PATH, LOOP AND CONNECTOR GRAPHICS ARE CREATED IN ADOBE ILLUSTRATOR. THIS GRAPHIC IS MEANT TO FOLLOW THE PATH/TRAIL.

BOX COLOR: RGB 179, 25, 0, RED.

A 0.5 POINT GREY STROKE IS AROUND THE OUTSIDE OF THE BOX. CMYK 0, 0, 0, 100

FONT: 18 POINT CENTURY GOTHIC BOLD, TITLE CASE, TRACK 100, WHITE

AREA LABELS

FONT: 30 POINT CENTURY GOTHIC BOLD, TITLE CASE, TRACK 100, VARIATION OF GREEN COLORS TO MATCH THE BACKGROUND.

TOWN OF MAMMOTH LAKES - DEPARTMENT OF PUBLIC WORKS



GRAPHIC CONVENTIONS TYPE 2 FRONT SIDE MAP DESCRIPTIONS

PUBLIC WORKS

DIRECTOR APPROVAL: 

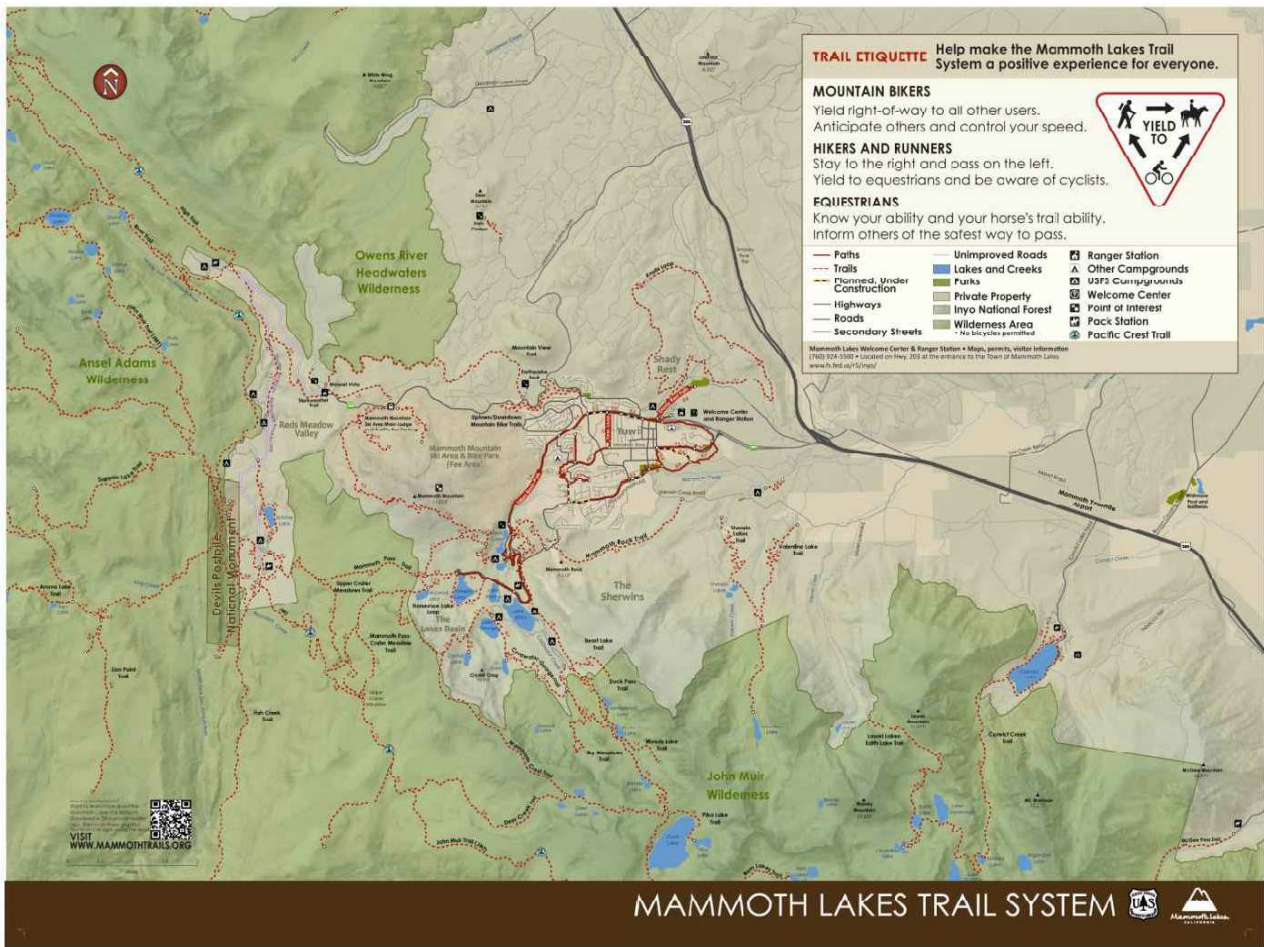
DATE: May 7, 2014

STANDARD PLAN

607-1

SHEET 5 OF 8

TYPE 2 BACK-SIDE MAP



LEGEND SPECIFICATIONS

DIMENSIONS: 17.875 IN x 13.1957 IN
BOX OUTER STROKE COLOR: RGB 77, 49, 20, BROWN

TRAIL ETIQUETTE HEADING

COLOR" RGB 179, 25, 0, RED
FONT: 46 POINT CENTURY GOTHIC BOLD, TITLE CASE, TRACK 100

HELP MAKE THE MAMMOTH LAKES TRAIL SYSTEM A POSITIVE EXPERIENCE
FOR EVERYONE - HEADING

COLOR: CMYK 24, 100, 100, 0, BLACK
FONT: 40 POINT CENTURY GOTHIC BOLD, TITLE CASE, TRACK 100

TOWN OF MAMMOTH LAKES - DEPARTMENT OF PUBLIC WORKS



GRAPHIC CONVENTIONS
TYPE 2 BACK SIDE MAP AND LEGEND DESCRIPTIONS

PUBLIC WORKS
DIRECTOR APPROVAL: *[Signature]*

DATE: May 7, 2014

STANDARD PLAN

607-1

SHEET 6 OF 8

"YIELD TO" GRAPHIC AND TEXT

DIMENSIONS: 17.875 IN x 16.089 IN

BOX COLOR: RGB 248, 247, 236, LIGHT TAN

DIVIDER LINE: RGB 217, 208, 182, TAN

DIVIDER LINE TRANSPARENCY: 87%

MAIN HEADINGS

FONT: 40 POINT CENTURY GOTHIC BOLD, TITLE CASE, TRACK 100, BLACK

TEXT BELOW MAIN HEADINGS

FONT: 40 POINT CENTURY GOTHIC REGULAR, TITLE CASE, TRACK 100, BLACK

"YIELD TO" SPECIFICATIONS

DIMENSIONS: 1.5718 IN x 1.3467 IN TRIANGLE

BACKGROUND COLOR: RGB 255, 254, 247, OFF WHITE

PINSTRIPE STROKE: RGB 178, 32, 36, RED

GRAPHICS: HIKE, BIKE, HORSE AND ARROWS, BLACK

LEGEND WITH SYMBOLOGY

DIMENSIONS: 17.8194 IN x 3.4107 IN

COLOR: RGB 255, 254, 246, OFF WHITE

SYMBOLOGY DESCRIPTIONS

FONT: 30 POINT CENTURY GOTHIC BOLD, TRACK 100, BLACK

CMYK COLOR SWATCHES

PATHS: 179, 25, 0, RED

TRAILS: 179, 25, 0, RED

PLANNED, UNDER CONSTRUCTION:

RED: 179, 25, 0

TAN: 237, 236, 207

BLACK

ROADS AND HIGHWAYS: 105, 105, 105

UNIMPROVED ROADS: 130, 130, 130, GREY

ON-STREET BIKE LANES

GREY: 105, 105, 105

BLUE: 0, 146, 215

SECONDARY STREETS: 130, 130, 130, GREY

LAKES AND STREAMS: 101, 152, 204, BLUE

PARKS: 138, 157, 163, GREEN

PRIVATE PROPERTY: CUSTOM

INYO NATIONAL FOREST: CUSTOM

WILDERNESS: CUSTOM

SYMBOL SPECIFICATIONS

DIMENSIONS: 0.3811 IN x 0.3811 IN

INFORMATION BAR

DIMENSIONS: 17.8194 IN x 1.2757 IN

COLOR: RGB 217, 208, 182, TAN

MAMMOTH LAKES WELCOME CENTER & RANGER STATION - HEADING

21 POINT CALIBRI BOLD, TITLE CASE, TRACK 100, BLACK

MAPS, PERMITS, VISITOR CENTER - HEADING

21 POINT CALIBRI BOLD, TITLE CASE, TRACK 100, BLACK

(760) 924-5500 LOCATED ON HWY. 203 AT THE ENTRANCE TO THE TOWN OF MAMMOTH LAKES

WWW.FS.FED.US/R5/INYO/ - HEADING

21 POINT CALIBRI REGULAR, TITLE CASE, TRACK 100, BLACK

MAMMOTH LAKES TRAIL SYSTEM LOGO BAR

DIMENSIONS: 50 IN x 2 IN

BOX COLOR: RGB 77, 49, 20, BROWN, NO OUTLINE

FONT DIMENSIONS: 19.6792 IN x 0.9666, CENTURY GOTHIC REGULAR, UPPER CASE, TRACK 100, BLACK

TOWN OF MAMMOTH LAKES - DEPARTMENT OF PUBLIC WORKS



GRAPHIC CONVENTIONS TYPE 2 BACK SIDE MAP LEGEND DESCRIPTIONS

PUBLIC WORKS

DIRECTOR APPROVAL: 

DATE: May 7, 2014

STANDARD PLAN

607-1

SHEET 7 OF 8

QR CODE

DIMENSIONS: 1.6828 IN x 1.6828 IN

QR CODE SHALL BE DEVELOPED AND PROVIDED BY THE TOWN OF MAMMOTH LAKES.

HAVE A SMARTPHONE? - TEXT

FONT: 14 POINT CENTURY GOTHIC REGULAR, TITLE CASE, TRACK 100, BLACK

VISIT WWW.MAMMOTHTRAILS.ORG - TEXT

FONT: 29 POINT CENTURY GOTHIC REGULAR, TITLE CASE, TRACK 100, BLACK

QR CODE SIGN ID


FONT: 8 POINT CENTURY GOTHIC REGULAR, TITLE CASE, TRACK 100, BLACK

SCALE BAR

FONT: 14 POINT CENTURY GOTHIC REGULAR, TITLE CASE, TRACK 100, BLACK

TOWN OF MAMMOTH LAKES - DEPARTMENT OF PUBLIC WORKS**GRAPHIC CONVENTIONS
TYPE 2 BACK SIDE MAP LEGEND DESCRIPTIONS**

PUBLIC WORKS

DIRECTOR APPROVAL: 

DATE: May 7, 2014

STANDARD PLAN

607-1

SHEET 8 OF 8

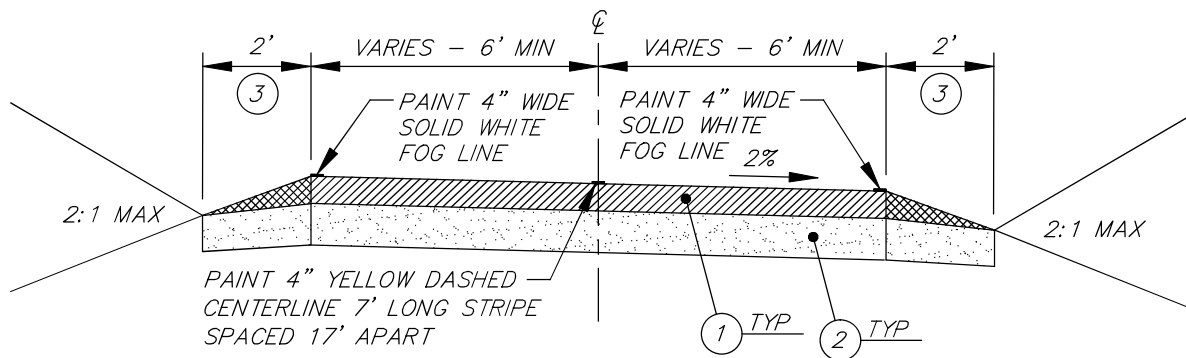
MULTI-USE PATHS

THIS SECTION PROVIDES STANDARDS FOR THE CONSTRUCTION OF MULTI-USE PATHS, INCLUDING SPECIFICATIONS FOR MATERIALS AND A TYPICAL SECTION.

MATERIALS

1. AGGREGATE BASE SHALL BE CLASS II, 3/4" MAXIMUM GRADING, AND SHALL CONFORM TO THE PROVISIONS OF SECTION 26, "AGGREGATE BASES" OF THE CSS AND SHALL BE COMPACTED TO A MINIMUM OF 95% OF THE MATERIALS MAXIMUM DRY DENSITY AS DETERMINED BY ASTM D-1557.
2. ASPHALT CONCRETE SHALL BE CLASS B, 1/2" MAXIMUM GRADING, AND SHALL CONFORM TO THE PROVISIONS OF SECTION 39, "HOT MIX ASPHALT " OF THE CSS. SEAL COAT OF SS-1 OR CSS-1 ASPHALT SHALL BE APPLIED AT 40-70 GALLONS PER SQUARE FOOT TO NEW ASPHALT CONCRETE PAVED SURFACES. TACK COAT BETWEEN PAVEMENT LIFTS (3" MAXIMUM LIFT) OR FOR CAPPING EXISTING PAVEMENT SHALL BE CSS-1 OR SS-1 APPLIED AT 45 GALLONS PER SQUARE FOOT PER SECTION 94, "ASPHALTIC EMULSIONS" OF THE CSS.
3. SLURRY CEMENT BACKFILL SHALL CONFORM TO THE PROVISIONS IN SECTION 19-3.02D, "SLURRY CEMENT BACKFILL" OF THE CSS.
4. INSTALLATION OF TRAFFIC STRIPES AND PAVEMENT MARKINGS SHALL BE IN CONFORMANCE WITH THE PROVISIONS OF SECTION 84, "TRAFFIC STRIPES AND PAVEMENT MARKINGS" OF THE CSS.

TYPICAL SECTION



CONSTRUCTION NOTES

1. 2 1/2" ASPHALT CONCRETE.
2. 4" CLASS II AGGREGATE BASE COMPACTED TO A MINIMUM OF 95% OF THE MATERIALS RELATIVE DENSITY
3. CLASS II AGGREGATE BASE SHOULDER BACKING. TAPER FROM 2 1/2" TO 0".

TOWN OF MAMMOTH LAKES - DEPARTMENT OF PUBLIC WORKS



MULTI-USE PATHS

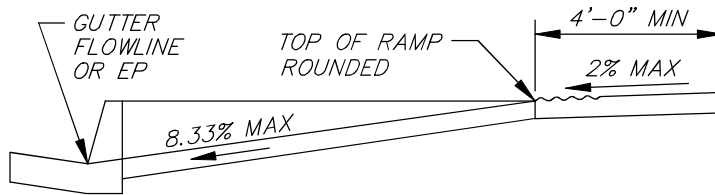
PUBLIC WORKS
DIRECTOR APPROVAL:

DATE: May 7, 2014

STANDARD PLAN

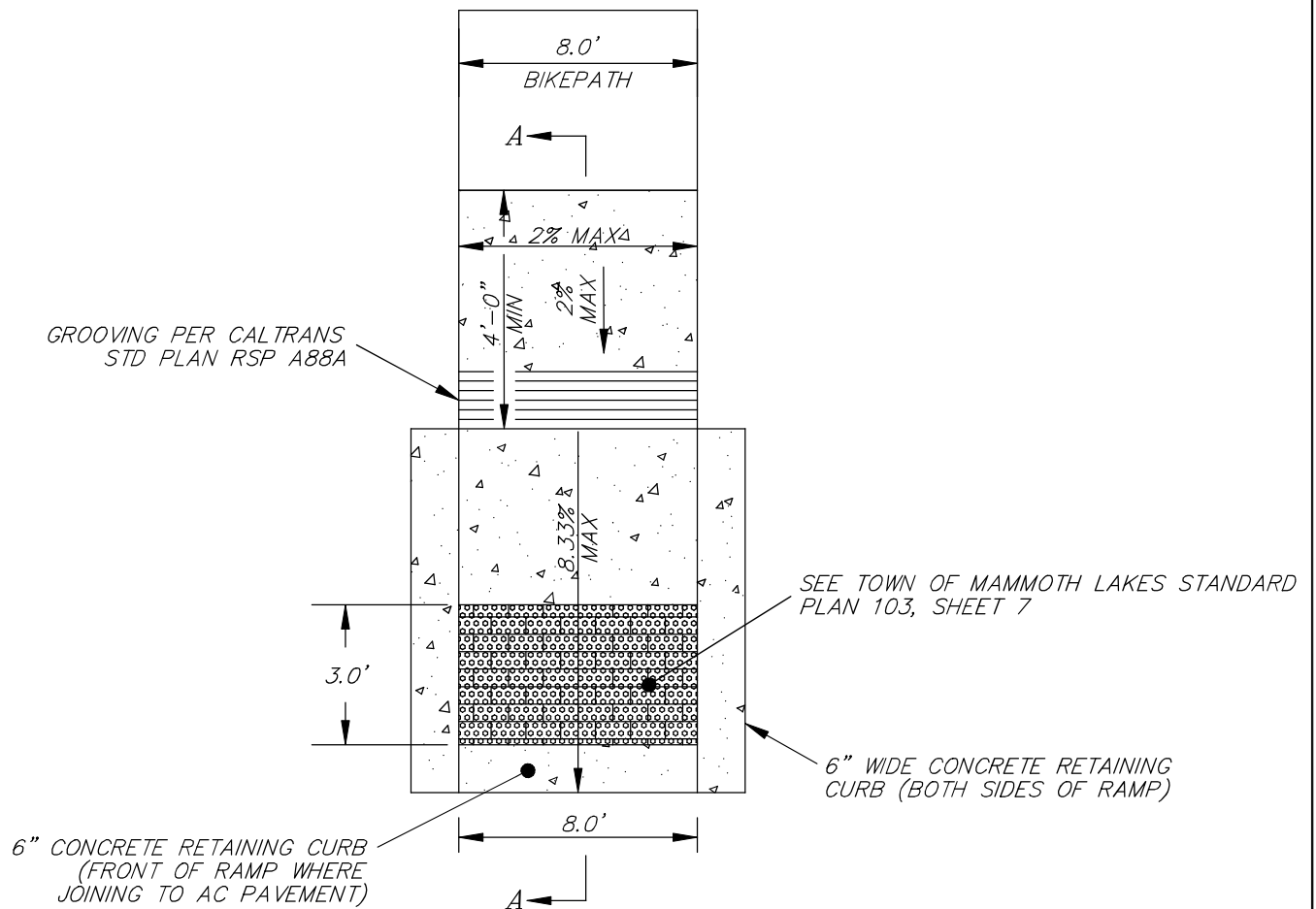
608-1

SHEET 1 OF 4



SECTION A-A

N.T.S.



TOWN OF MAMMOTH LAKES - DEPARTMENT OF PUBLIC WORKS



MULTI-USE PATHS

TYPICAL INTERSECTION RAMP - TYPE A

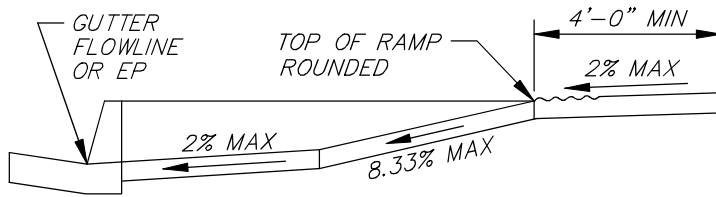
PUBLIC WORKS
DIRECTOR APPROVAL: *[Signature]*

DATE: May 7, 2014

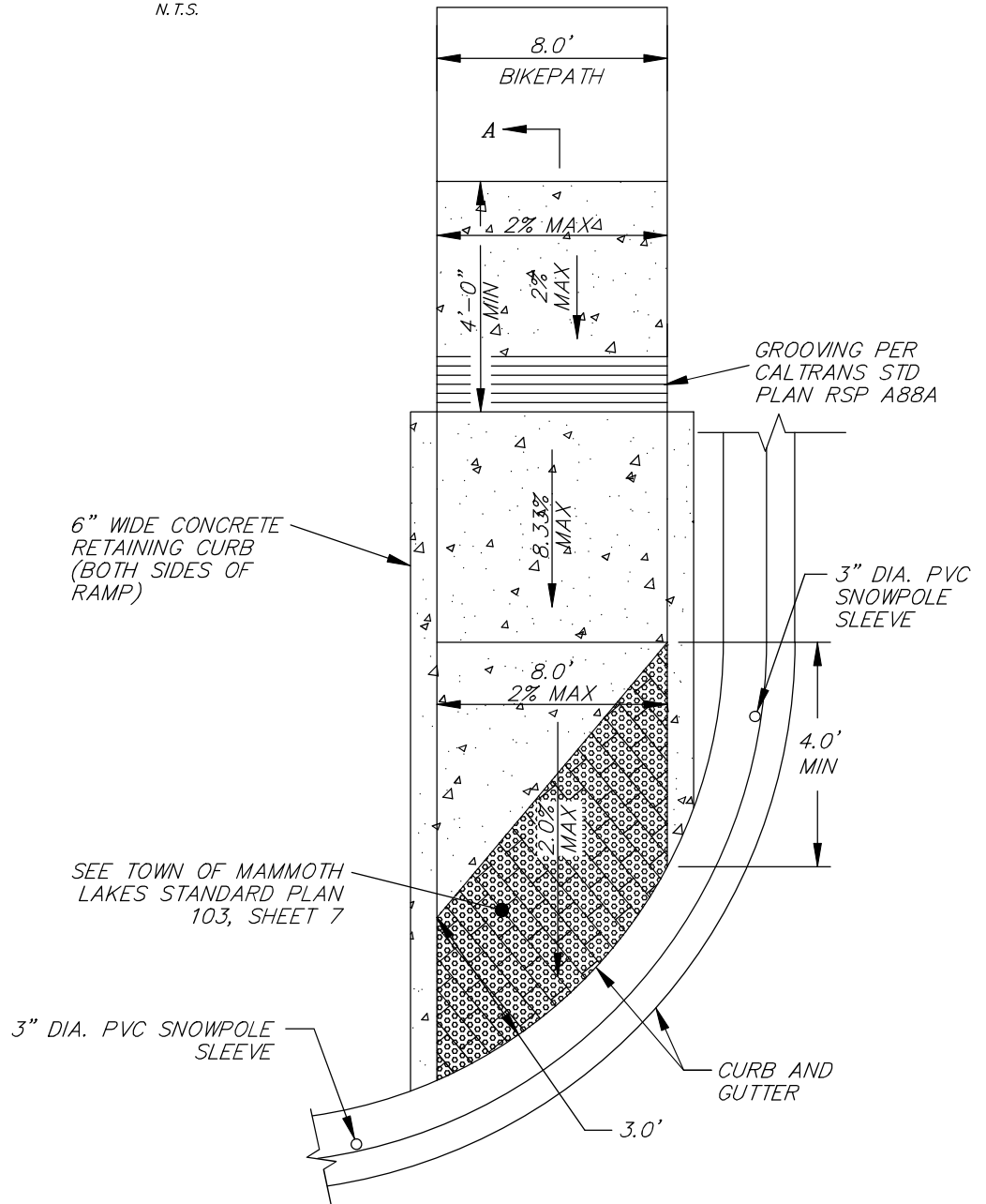
STANDARD PLAN

608-1

SHEET 2 OF 4



SECTION A-A
N.T.S.

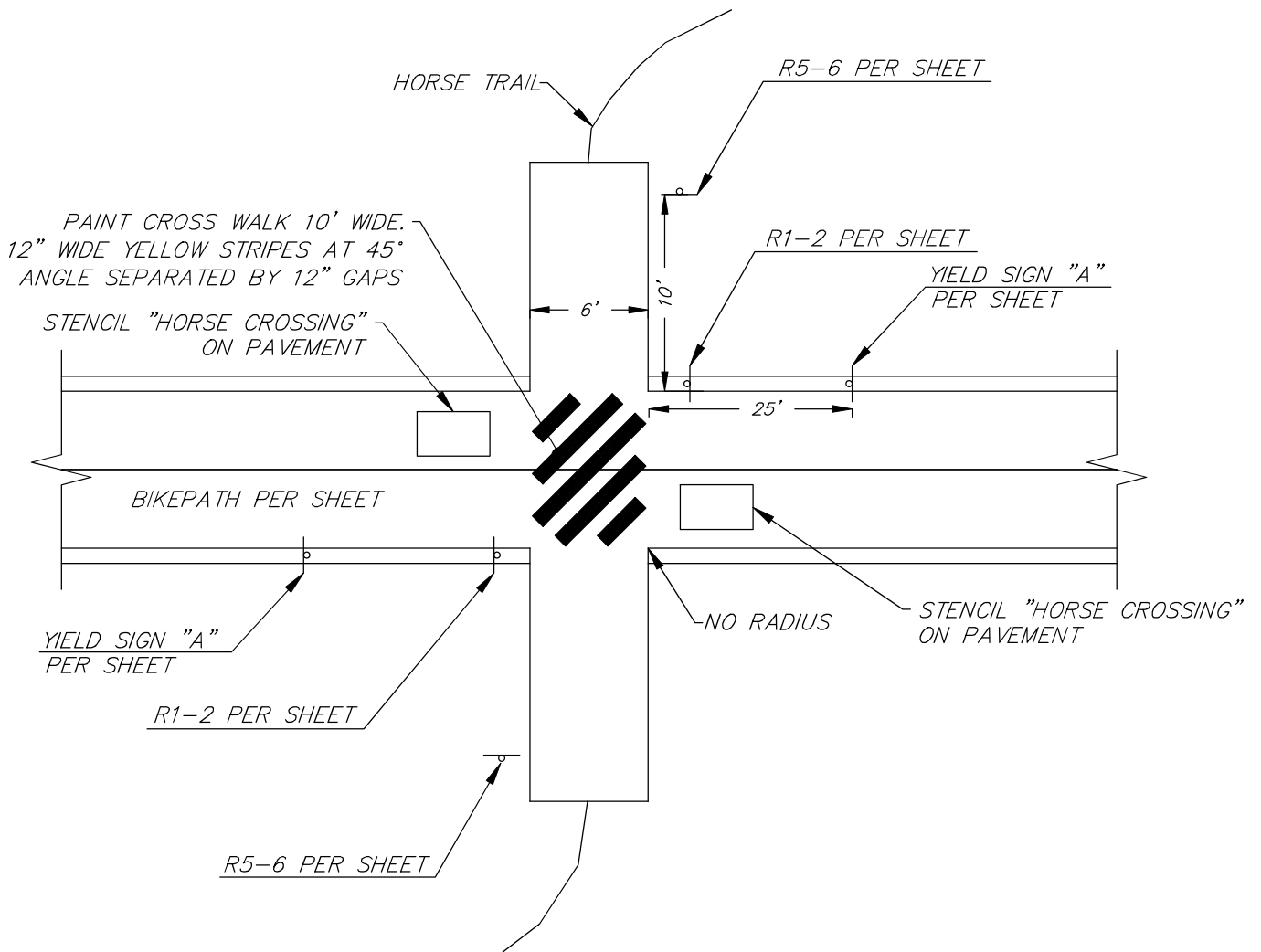


TOWN OF MAMMOTH LAKES - DEPARTMENT OF PUBLIC WORKS



MULTI-USE PATHS
TYPICAL INTERSECTION RAMP - TYPE B
PUBLIC WORKS
DIRECTOR APPROVAL: *[Signature]* DATE: **May 7, 2014**

STANDARD PLAN
608-1
SHEET 3 OF 4



TOWN OF MAMMOTH LAKES - DEPARTMENT OF PUBLIC WORKS

**MULTI-USE PATHS
EQUESTRIAN CROSSING**

STANDARD PLAN

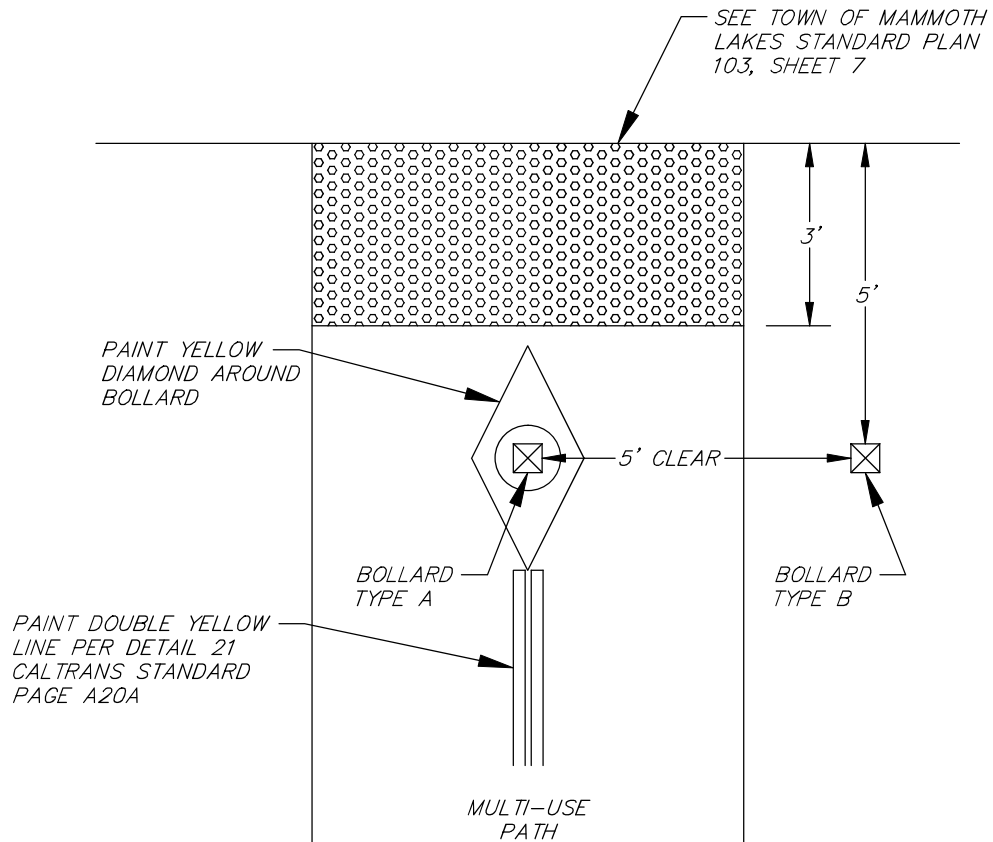
608-1

SHEET 4 OF 4



PUBLIC WORKS
DIRECTOR APPROVAL: *[Signature]*

DATE: **May 7, 2014**



TOWN OF MAMMOTH LAKES - DEPARTMENT OF PUBLIC WORKS


**BOLLARD PLACEMENT
AT INTERSECTION**

STANDARD PLAN

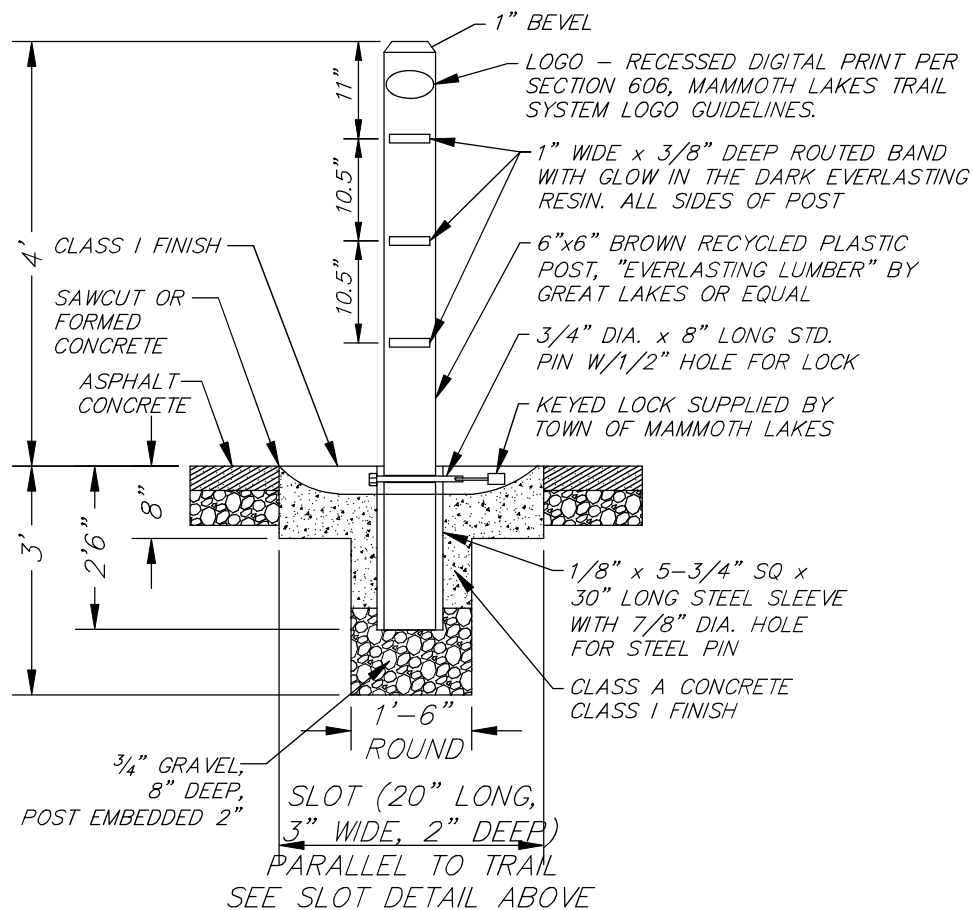
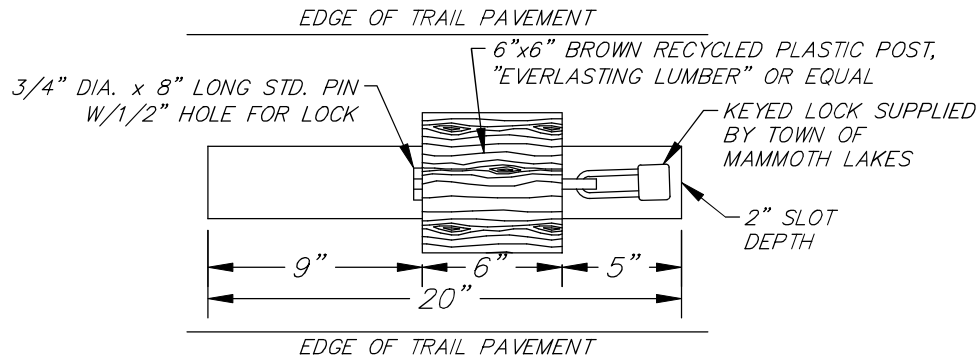
609-1

SHEET 1 OF 3



PUBLIC WORKS
DIRECTOR APPROVAL: 

DATE: **May 7, 2014**



TOWN OF MAMMOTH LAKES - DEPARTMENT OF PUBLIC WORKS

MULTI-USE PATHS BOLLARD - TYPE A

STANDARD PLAN

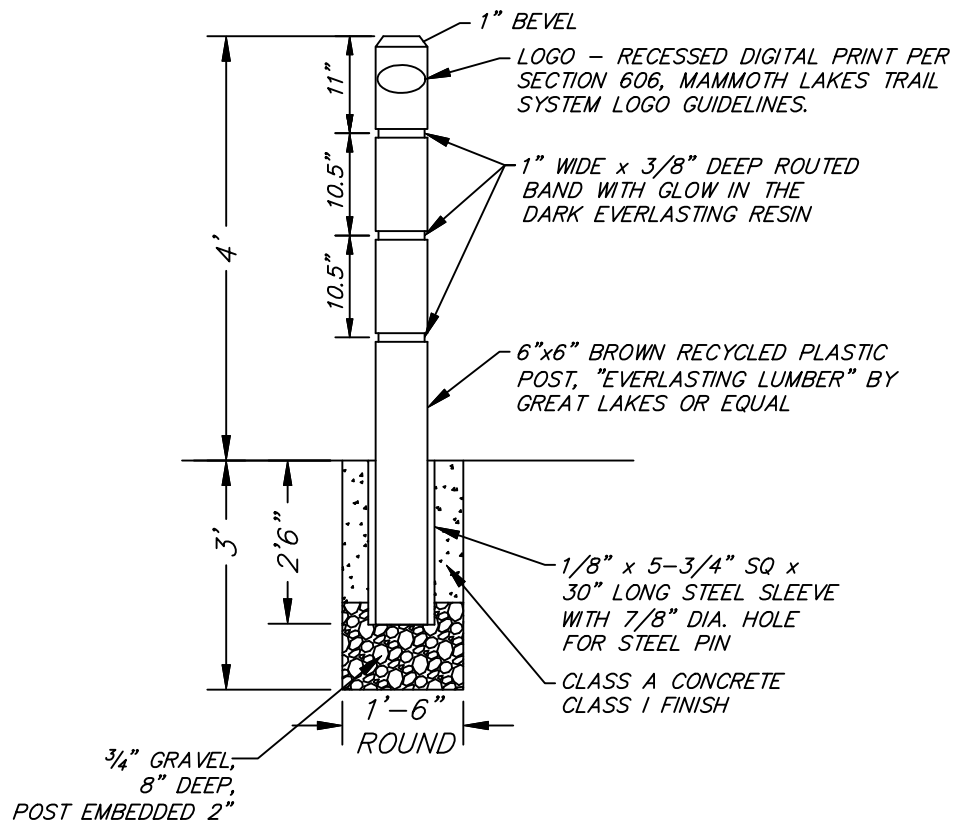
609-1

SHEET 2 OF 3



PUBLIC WORKS
DIRECTOR APPROVAL: *[Signature]*

DATE: May 7, 2014



TOWN OF MAMMOTH LAKES - DEPARTMENT OF PUBLIC WORKS

**MULTI-USE PATHS
BOLLARD - TYPE B**

STANDARD PLAN

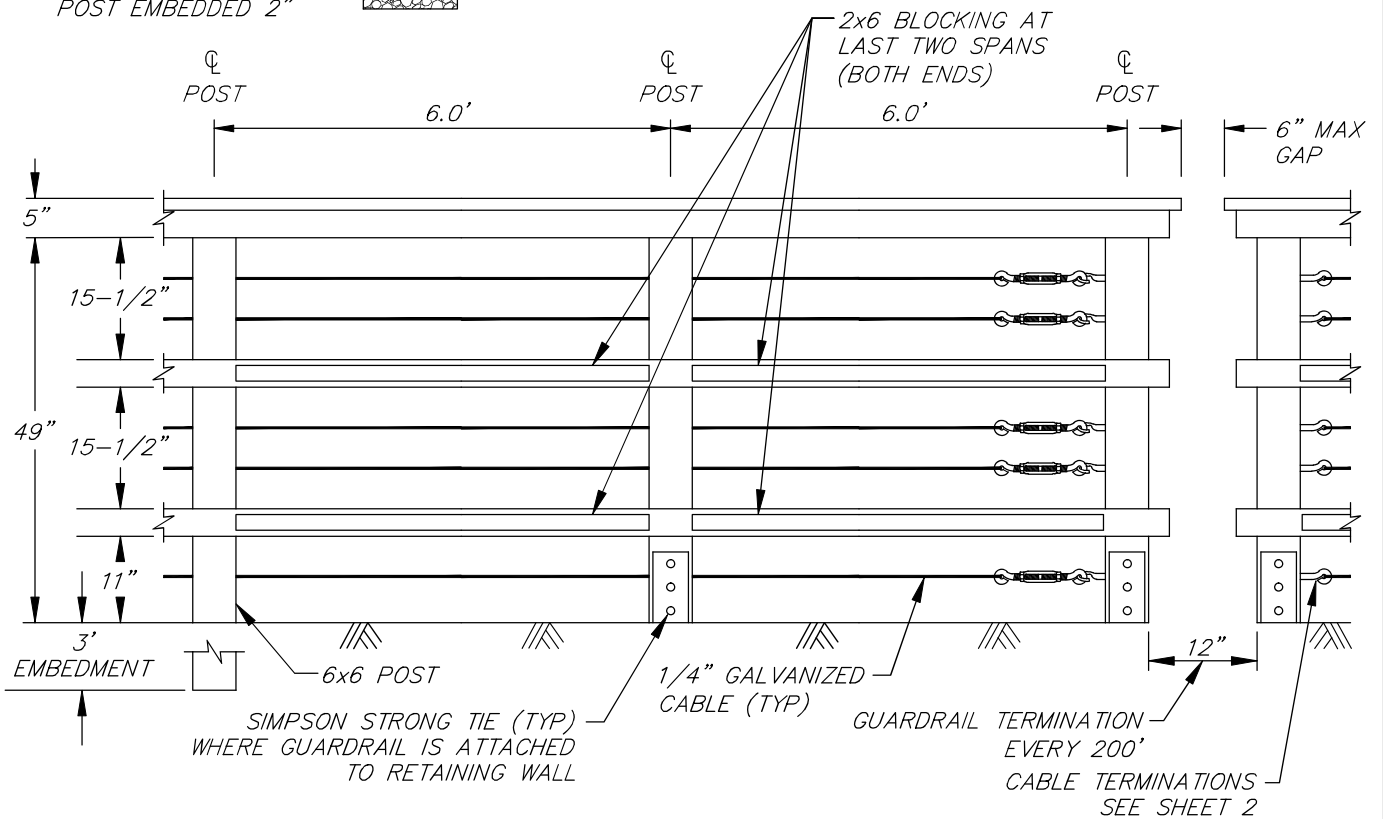
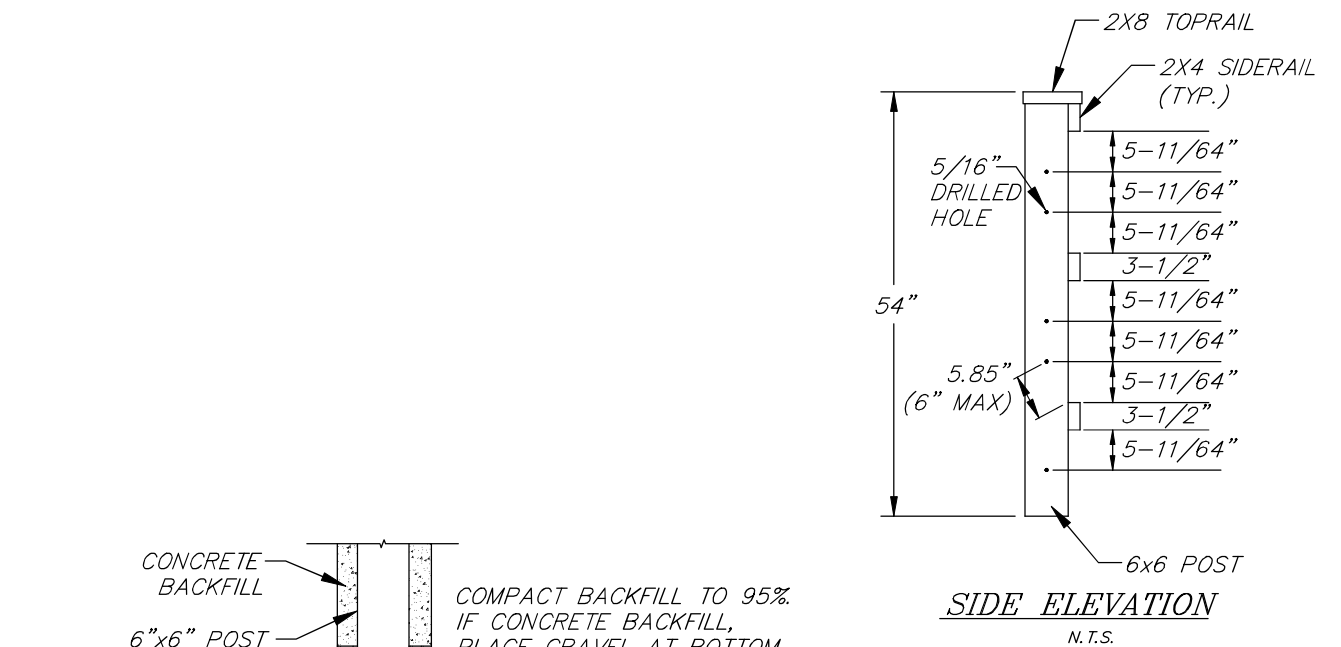
609-1

SHEET 3 OF 3



PUBLIC WORKS
DIRECTOR APPROVAL: *[Signature]*

DATE: **May 7, 2014**



NOTE
ALL POSTS AND RAILINGS SHALL
BE WOLMANIZED DOUGLAS FIR

TOWN OF MAMMOTH LAKES - DEPARTMENT OF PUBLIC WORKS

MULTI-USE PATHS WOOD FENCE GUARDRAIL

STANDARD PLAN

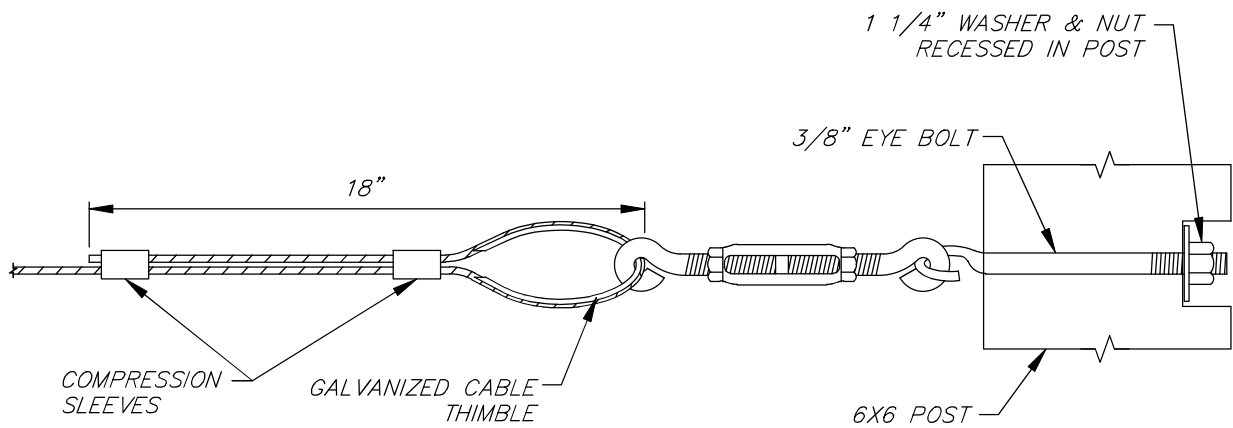
610-1

SHEET 1 OF 4

PUBLIC WORKS
DIRECTOR APPROVAL:

DATE: May 7, 2014

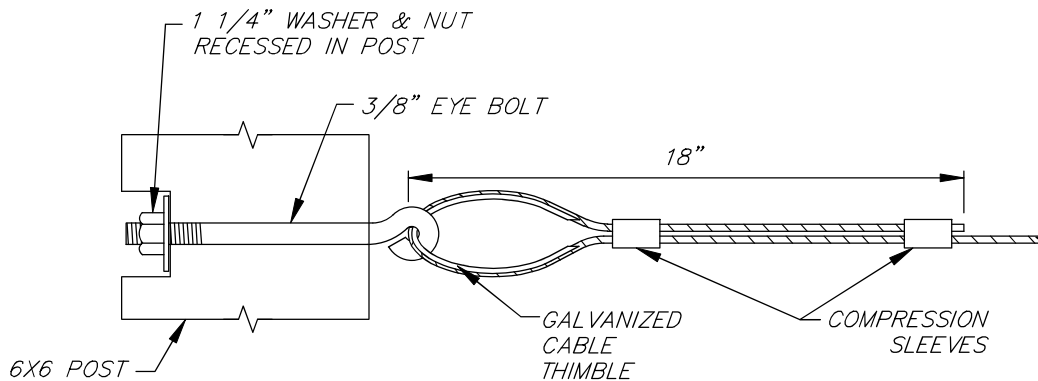




TERMINATION WITH TURNBUCKLE

USE AT ONE END OF EACH SECTION

N.T.S.



TERMINATION WITHOUT TURNBUCKLE

USE AT ONE END OF EACH SECTION

N.T.S.

TOWN OF MAMMOTH LAKES - DEPARTMENT OF PUBLIC WORKS



**MULTI-USE PATHS
CABLE TERMINATIONS**

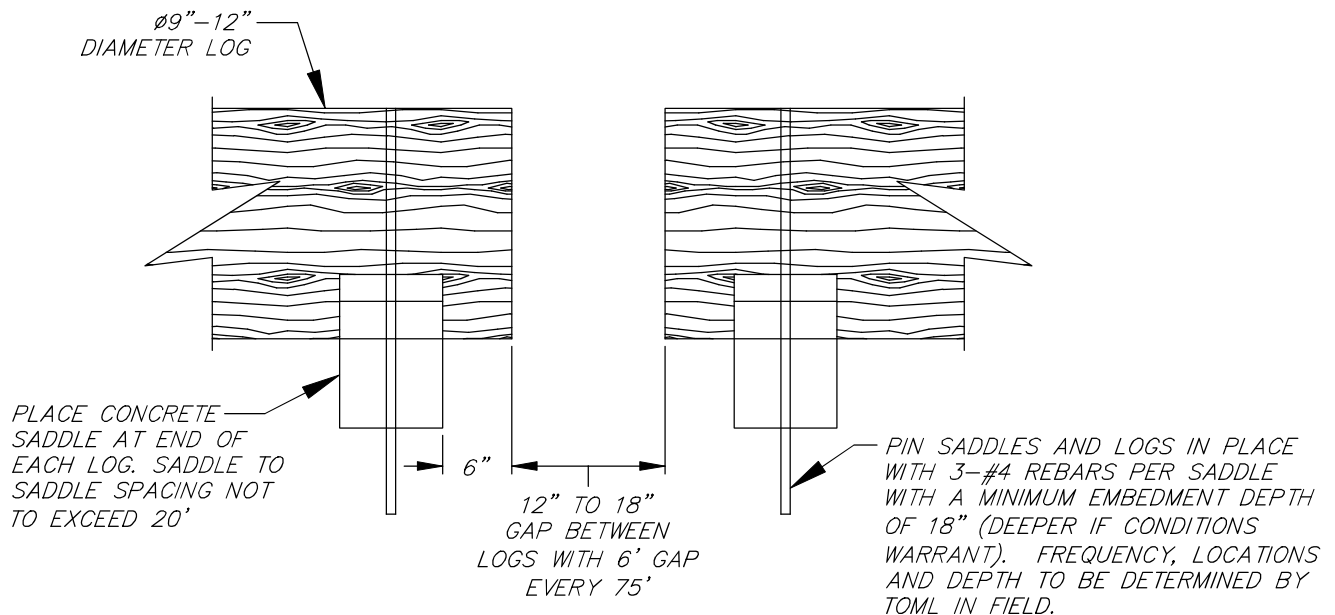
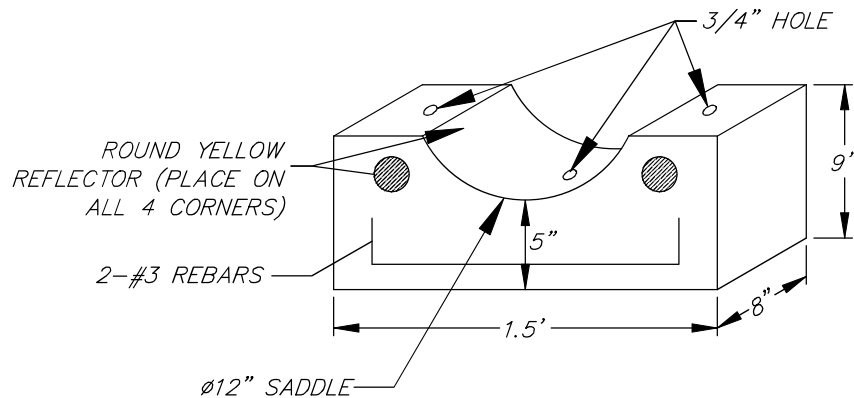
PUBLIC WORKS
DIRECTOR APPROVAL: *[Signature]*

DATE: **May 7, 2014**

STANDARD PLAN

610-1

SHEET 2 OF 4



LOG CURB & SADDLE DETAILS - SMALL

N.T.S.

TOWN OF MAMMOTH LAKES - DEPARTMENT OF PUBLIC WORKS



MULTI-USE PATHS LOG CURB - SMALL

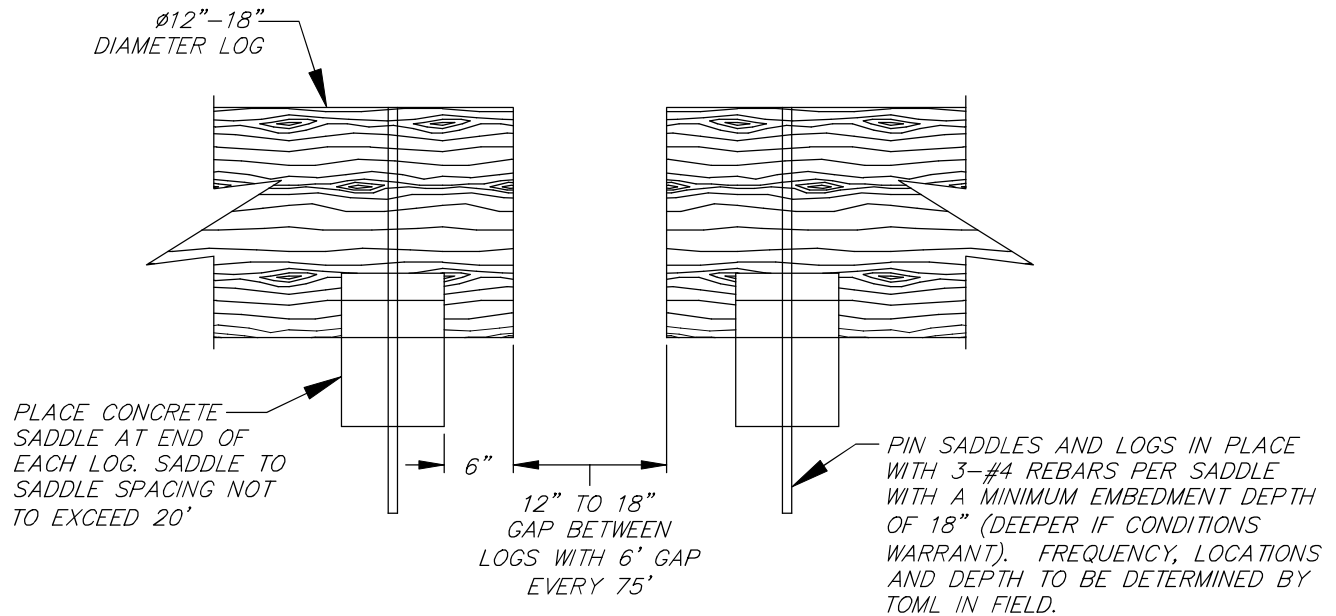
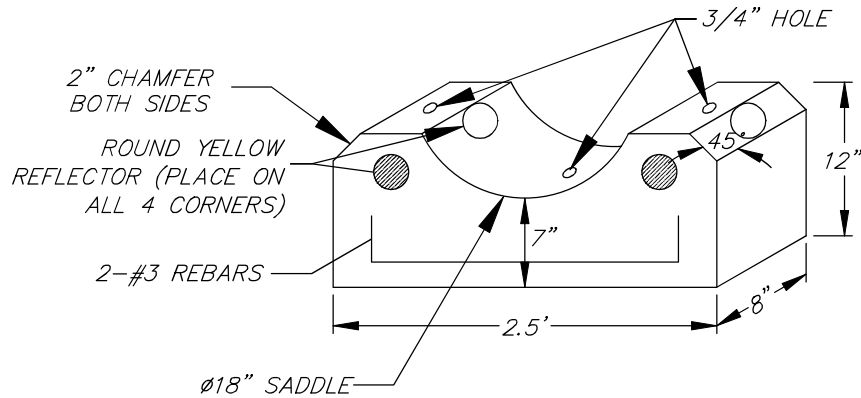
PUBLIC WORKS
DIRECTOR APPROVAL: *[Signature]*

DATE: May 7, 2014

STANDARD PLAN

610-1

SHEET 3 OF 4



LOG CURB & SADDLE DETAILS - SMALL

N.T.S.

TOWN OF MAMMOTH LAKES - DEPARTMENT OF PUBLIC WORKS



MULTI-USE PATHS LOG CURB - LARGE

PUBLIC WORKS
DIRECTOR APPROVAL: *[Signature]*

DATE: May 7, 2014

STANDARD PLAN

610-1

SHEET 4 OF 4

SOFT SURFACE TRAILS

IF THE TOWN OF MAMMOTH LAKES CHOOSES TO ADOPT EXISTING U.S. FOREST SERVICE STANDARDS, THE FOLLOWING REFERENCE DOCUMENTS MAY BE RELEVANT:

1. U.S. DEPARTMENT OF AGRICULTURE, FOREST SERVICE, "TRAIL CONSTRUCTION AND MAINTENANCE NOTEBOOK". (2007)
2. U.S. DEPARTMENT OF AGRICULTURE, FOREST SERVICE, "STANDARD SPECIFICATION FOR CONSTRUCTION AND MAINTENANCE OF TRAILS". (1996)
3. U.S. DEPARTMENT OF AGRICULTURE, FOREST SERVICE, "TRAIL ACCESSIBILITY GUIDELINES". (2006)

SOFT SURFACE SIGNAGE AND WAYFINDING

IF THE TOWN OF MAMMOTH LAKES CHOOSES TO DEVELOP AND ADOPT SUCH STANDARDS, THE FOLLOWING REFERENCE DOCUMENTS MAY BE RELEVANT:

1. U.S. DEPARTMENT OF AGRICULTURE, FOREST SERVICE, "SIGN AND POSTER GUIDELINES FOR THE FOREST SERVICE, EM 7100-15". (DECEMBER 2005)

TOWN OF MAMMOTH LAKES - DEPARTMENT OF PUBLIC WORKS



SOFT SURFACE TRAILS

PUBLIC WORKS
DIRECTOR APPROVAL: 

DATE: May 7, 2014

STANDARD PLAN

611-1

SHEET 1 OF 1

MAMMOTH LAKES TRAIL SYSTEM NAMING CONVENTIONS

1. THE FOLLOWING SECTION PROVIDES THE OFFICIAL NAMING CONVENTIONS THAT SHALL BE USED IN CONJUNCTION WITH THE MAMMOTH LAKES TRAIL SYSTEM. THIS LIST INCLUDES NAMING CONVENTIONS FOR TRAIL AND DESTINATIONS.


AS OF JANUARY 27, 2012

ANONA LAKE TRAIL	GLADYS LAKE
AIRPORT ROAD	GLASS CREEK
ANSEL ADAMS WILDERNESS	HAMMIL LAKE
ARROWHEAD LAKE	HAYDEN CABIN MUSEUM
BARNEY LAKE	HAYDEN CABIN MUSEUM TRAILHEAD
BARRETT LAKE	HEART LAKE TRAIL
BENTON CROSSING ROAD	HIGH TRAIL
BLOODY LAKE	HIKING TRAIL
BLOODY MOUNTAIN	HORSESHOE LAKE
BOUNDARY CREEK	HORSESHOE LAKE TRAIL
BRIGHT DOT LAKE	HORSESHOE LAKE PICNIC AREA
CAMP HIGH SIERRA	HORSESHOE LAKE TRAILHEAD
CANYON BOULEVARD	HOT CREEK
CANYON LODGE	HOT CREEK ROAD
CECILE LAKE	ICEBERG LAKE
CHATEAU ROAD ACCESS	INYO CRATERS
CLOVERLEAF LAKE	JOHN MUIR TRAIL
COLDWATER CAMPGROUND	JOHN MUIR WILDERNESS
COLDWATER CREEK	KELLEY ROAD
COLDWATER CREEK TRAILHEAD	KING CREEK
COLDWATER - GEORGE TRAIL	KNOLLS LOOP
COMMUNITY CENTER PARK	LAKE DOROTHY
CONVICT CREEK	LAKE GENEVIEVE
CONVICT CREEK TRAIL	LAKE GEORGE
CONVICT LAKE	LAKE GEORGE CAMPGROUND
CONVICT LAKE ROAD	LAKE MAMIE
CRYSTAL CRAG	LAKE MARY
CRYSTAL LAKE	LAKE MARY / POKONOB
CRYSTAL LAKE TRAIL	LAKE MARY CAMPGROUND
DEADMAN CREEK	LAKE MARY LOOP ROAD
DEADMAN CREEK ROAD	LAKE MARY ROAD
DEER CREEK TRAIL	LAKEFRONT PATH
DEER LAKES	LAKES BASIN PATH
DEER MOUNTAIN	LAKEVIEW BOULEVARD
DEVILS POSTPILE NATIONAL MONUMENT	LAURA LAKE
DUCK LAKE	LAUREL CREEK
DUCK PASS TRAIL	LAUREL LAKES - EDITH LAKE TRAIL
EAGLE LODGE	LAUREL LAKES ROAD
EARTHQUAKE FAULT	LAUREL MOUNTAIN
EDITH LAKE	LAVA TUBE
EDIZA LAKE	LAVA TUBE LOOKOUT
EMERALD LAKE TRAIL	LIBRARY
EMILY LAKE	LIBRARY TRAILHEAD
FERN LAKE	LION POINT TRAIL
FISH CREEK TRAIL	LODESTAR CONNECTOR
FOREST TRAIL	LOIS LAKE
GARNET LAKE	LOOKOUT MOUNTAIN

TOWN OF MAMMOTH LAKES - DEPARTMENT OF PUBLIC WORKS



GENERAL

PUBLIC WORKS
DIRECTOR APPROVAL: 

DATE: May 7, 2014

STANDARD PLAN

612-1

SHEET 1 OF 3

LOWER TWIN LAKE
 MAIN STREET
 MAIN STREET CONNECTOR
 MAJESTIC PINES DRIVE
 MAMMOTH CITY
 MAMMOTH CONSOLIDATED MINE
 MAMMOTH CREEK
 MAMMOTH CREEK PARK
 MAMMOTH CREEK PARK TRAILHEAD
 MAMMOTH CREST
 MAMMOTH CREST TRAIL
 MAMMOTH HOSPITAL
 MAMMOTH LAKES LIBRARY
 MAMMOTH MOUNTAIN
 MAMMOTH MOUNTAIN BIKE PARK
 MAMMOTH MOUNTAIN SKI AREA & BIKE PARK (FEE AREA)
 MAMMOTH MOUNTAIN SKI AREA MAIN LODGE &
 SHUTTLE BUS PARKING
 MAMMOTH MOUNTAIN TRAIL
 MAMMOTH PASS
 MAMMOTH PASS - CRATER MEADOW TRAIL
 MAMMOTH PASS TRAIL
 MAMMOTH ROCK
 MAMMOTH ROCK TRAIL
 MAMMOTH MOUNTAIN RV PARK
 MAMMOTH SCENIC LOOP
 MAMMOTH YOSEMITE AIRPORT
 MCGEE PASS TRAIL
 MCLEOD LAKE
 MERIDIAN BOULEVARD
 MERIDIAN CONNECTOR
 MIDDLE FORK SAN JOAQUIN RIVER
 MILDRED LAKE
 MILL CITY
 MINARET LAKE
 MINARET ROAD
 MINARET VISTA
 MOUNTAIN VIEW TRAIL
 MT. MORRISON
 NEW SHADY REST CAMPGROUND
 NEW SHADY REST TRAILHEAD
 NORTH VILLAGE
 NORTH WATERFORD AVENUE
 NORTH WATERFORD CONNECTOR
 OLAINÉ LAKE
 OLD MAMMOTH ROAD
 OLD MAMMOTH ROAD / MAIN STREET
 OLD MAMMOTH SPUR
 OLD SHADY REST CAMPGROUND
 OWENS RIVER HEADWATERS WILDERNESS
 PACIFIC CREST TRAIL
 PACK STATION
 PANORAMA DOME
 PANORAMA DOME TRAIL
 PANORAMA MOUNTAIN BIKE TRAIL
 PANORAMA MTB TRAILS
 PIKA LAKE
 PIKA LAKE TRAIL

PINE CITY CAMPGROUND
 POKONOBÉ LODGE
 RAM LAKES
 RAM LAKES TRAIL
 RANGER STATION
 RED'S LAKE
 RIM TRAIL
 RIVER TRAIL
 ROSALIE LAKE
 SAN JOAQUIN RIVER
 SAWMILL CUTOFF ROAD
 SCHOOLS
 SHADOW LAKE
 SHADY REST CAMPGROUND
 SHADY REST PARK
 SHADY REST PARK TRAILHEAD
 SHADY REST PATH
 SHERWIN CREEK
 SHERWIN CREEK CAMPGROUND
 SHERWIN CREEK ROAD
 SHERWIN LAKES
 SHERWIN LAKES TRAIL
 SHERWIN LAKES TRAILHEAD
 SHERWIN STREET
 SHERWINS VISTA
 SHUTTLE BUS ROUTE - RESTRICTED ROAD ACCESS
 SIERRA PARK CONNECTOR
 SIERRA PARK ROAD
 SIERRA STAR GOLF COURSE
 SKELTON LAKE
 SKY MEADOWS TRAIL
 SMOKEY BEAR FLAT
 SNOWCREEK GOLF COURSE
 SNOWCREEK MEADOW
 SOTCHER LAKE
 STARKWEATHER LAKE
 STARKWEATHER TRAIL
 SUPERIOR LAKE TRAIL
 TAMARACK LODGE
 THOUSAND ISLAND LAKE
 TJ LAKE
 TOBACCO FLAT
 TOWN LOOP
 TRAILS END PARK
 TRAIL END PARK TRAILHEAD
 TRANSIT STOP
 TRINITY LAKE
 TWIN FALLS OVERLOOK
 TWIN LAKES
 TWIN LAKES CAMPGROUND
 TWIN LAKES PICNIC AREA
 TWIN LAKES VISTA
 UPPER CRATER MEADOWS TRAIL
 UPPER TWIN LAKE
 UPTOWN / DOWNTOWN MOUNTAIN BIKE TRAILS
 UPTOWN / DOWNTOWN TRAILS
 VALENTINE LAKE
 VALENTINE LAKE TRAIL

TOWN OF MAMMOTH LAKES - DEPARTMENT OF PUBLIC WORKS

GENERAL

STANDARD PLAN

612-1

SHEET 2 OF 3

PUBLIC WORKS

DIRECTOR APPROVAL:

DATE: May 7, 2014

WATERFORD AVENUE
WELCOME CENTER
WELCOME CENTER AND RANGER STATION
WELCOME CENTER TRAILHEAD
WHITE WING MOUNTAIN
WHITMORE POOL AND BALLFIELDS
WOODS LAKE TRAIL

TOWN OF MAMMOTH LAKES - DEPARTMENT OF PUBLIC WORKS



GENERAL

PUBLIC WORKS
DIRECTOR APPROVAL: 

DATE: May 7, 2014

STANDARD PLAN
612-1
SHEET 3 OF 3

APPENDIX A

STANDARD PROCESS FOR "HOW TO SIGN THE MLTS"

CRITICAL DOCUMENTS

1. TRAIL ABBREVIATION CODE
2. NAMING CONVENTIONS
3. DESTINATIONS
4. PRIMARY I.D.
5. PRIMARY I.D. CLARIFIER
6. DESTINATIONS/SYMOLOGY RELATIONSHIP
7. DESIGN INTENT
8. TRAIL USAGE TEXT DOCUMENT (INCLUDES CHARACTER COUNT)
9. ARROW PRIORITY
10. MAP STANDARDS

PROCESS

1. IDENTIFY SIGN LOCATION(S)
2. ASSIGN SIGN # (EX. FACILITY MILEAGE)
3. DETERMINE SIGN TYPE USING SIGN SPACING AND LOCATION STANDARDS
4. DETERMINE SIGN TYPE SCENARIO
5. DEVELOP MESSAGING (DEPENDENT ON SIGN TYPE)

TYPE 2 MESSAGING

1. DETERMINE PRIMARY I.D. - SEE NAMING CONVENTION
2. DETERMINE PRIMARY I.D. CLARIFIER - SEE NAMING CONVENTION
3. DETERMINE RESCUE LOCATOR - SEE NAMING CONVENTION
4. DETERMINE PLAQUES - DEPENDENT UPON LOCATION AND JURISDICTION
5. DETERMINE SIGN ORIENTATION
6. DETERMINE WHICH FONT MAP TO APPLY
7. APPLY STANDARD RECREATION SYMBOLS OF HIKE, BIKE, AND DOG
8. DEVELOP WELCOME MESSAGE FOR FACILITY
9. LOGIC: WELCOME TO THE (FACILITY)
10. DEVELOP PRIMARY I.D. MESSAGE (DEPENDENT UPON LOCATION ALONG THE FACILITY)
11. LOGIC: TOTAL MILEAGE + FACILITY TYPE + DESTINATIONS + DIFFICULTY + ELEVATION
12. DEVELOP "YOU ARE HERE" MESSAGE
13. LOGIC: PRIMARY I.D. + PRIMARY I.D. CLARIFIER
14. APPLY STANDARD ETHICS MESSAGING

TYPE 2 MAPPING

1. DETERMINE APPROPRIATE SUB-REGION MAP
2. CONSULT MAP STANDARDS
3. INSERT MAP LEGEND TRAIL DESCRIPTIONS
4. LOGIC: FACILITY + DIFFICULTY (56 CHARACTER LIMIT)(MOVE TO MAP STANDARDS)
5. DEVELOP UNIQUE QR CODE FOR FRONT SIDE MAP
6. CONSULT SCREW HOLE PLACEMENT IN DESIGN INTENT (MOVE TO MAP STANDARDS)

TOWN OF MAMMOTH LAKES - DEPARTMENT OF PUBLIC WORKS



APPENDIX

PUBLIC WORKS
DIRECTOR APPROVAL: 

DATE: May 7, 2014

STANDARD PLAN

614-1

SHEET 1 OF 2

TYPE 4/6 MESSAGING

1. DETERMINE SIGN TYPE SCENARIO
2. DETERMINE APPROPRIATE DESTINATIONS USING NAMING CONVENTIONS
3. SELECT UP TO THREE SERVICE SYMBOLS PER DESTINATION
4. DETERMINE MILEAGE TO DESTINATIONS - MILEAGE IS REPRESENTED IN TENTHS USING CONVENTIONAL ROUNDING
5. DETERMINE DESTINATIONS ORDER BASED ON ARROW PRIORITY
7. DETERMINE RESCUE LOCATOR
8. DETERMINE ORIENTATION OF PANEL.

TYPE 4/6 MAPPING

1. CONSULT MAP STANDARDS
2. DETERMINE EXTENTS AND ORIENTATION
3. DESTINATIONS DISPLAYED MUST MATCH SIGN MESSAGING
4. CONSULT SCREW HOLE PLACEMENT IN DESIGN INTENT (MOVE TO MAP STANDARDS)
5. DEVELOP "YOU ARE HERE" MESSAGE

TYPE 6 MESSAGING

1. DETERMINE SIGN TYPE SCENARIO
2. DETERMINE APPROPRIATE DESTINATIONS USING NAMING CONVENTIONS
3. SELECT UP TO THREE SERVICE SYMBOLS PER DESTINATION
4. DETERMINE MILEAGE TO DESTINATIONS - MILEAGE IS REPRESENTED IN TENTHS USING CONVENTIONAL ROUNDING
5. DETERMINE DESTINATIONS ORDER BASED ON ARROW PRIORITY
7. DETERMINE RESCUE LOCATOR
8. DETERMINE ORIENTATION.

TYPE 6a MESSAGING

1. DETERMINE SIGN TYPE SCENARIO
2. DETERMINE APPROPRIATE DESTINATIONS USING NAMING CONVENTIONS
3. DETERMINE MILEAGE TO DESTINATIONS - MILEAGE IS REPRESENTED IN HUNDREDTHS USING CONVENTIONAL ROUNDING
4. DETERMINE RESCUE LOCATOR
5. DETERMINE ORIENTATION.

TOWN OF MAMMOTH LAKES - DEPARTMENT OF PUBLIC WORKS



APPENDIX

PUBLIC WORKS
DIRECTOR APPROVAL: 

DATE: May 7, 2014

STANDARD PLAN

614-1

SHEET 2 OF 2