

# SHARP

Sherwin Area Recreation Plan

Trails Technical Committee

SHARP TTC: Map ID #06

**CONCEPT: Hard-surface or paved non-motorized connector from the borrow pit staging area to Mammoth Creek Park East at the bridge**  
See The Sherwin Area Recreation Plan (SHARP) for detailed concept and rationale

Map Draft Date 09/17/10

## Legend


 SHARP TTC Trail Alignments

 SHARP Proposed Trails

 INF Trails

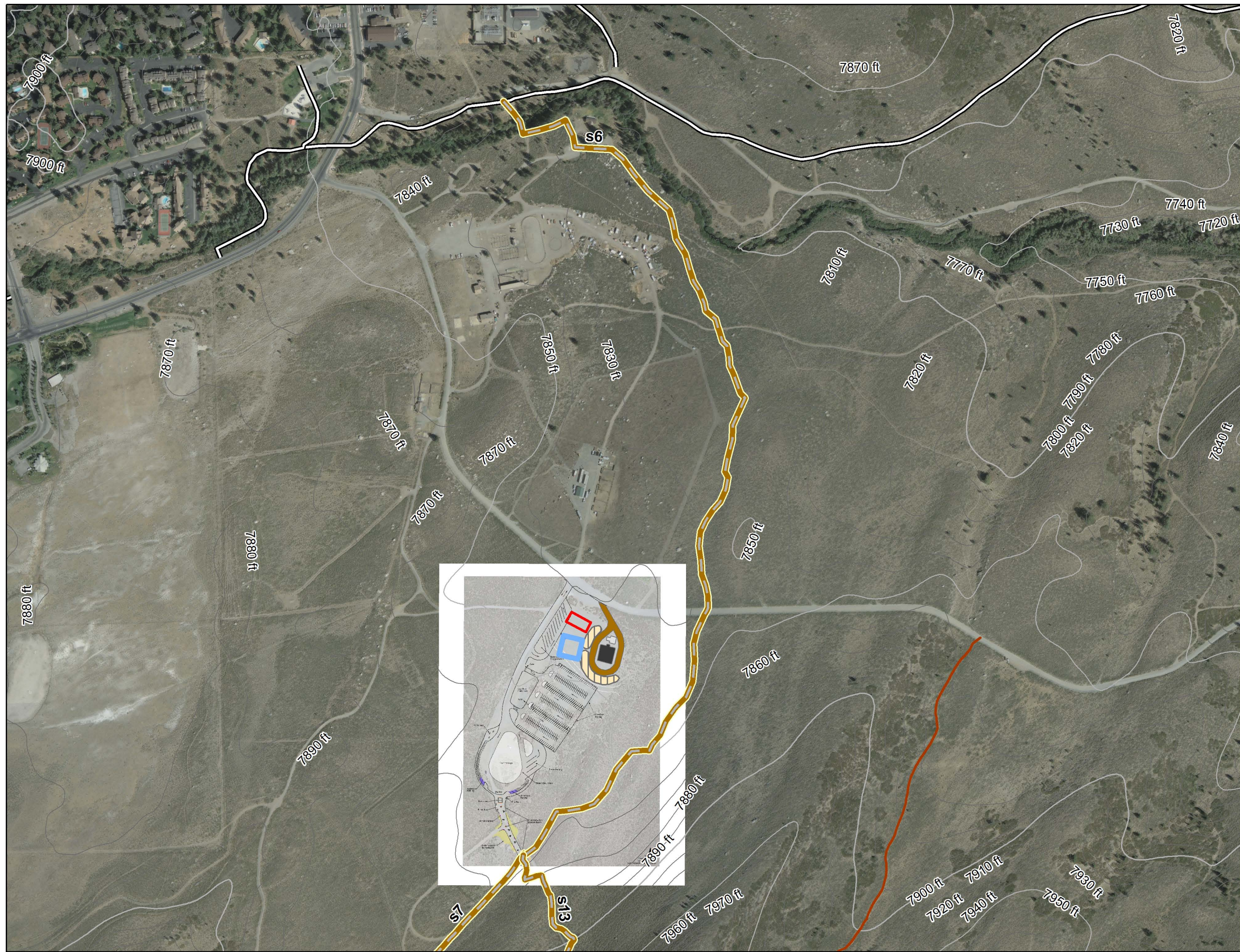
 Centerlines

### 10ft Contours

 Contour Line, Major

 Contour Line, Minor

 Contour Line, Intermediate



## SHARP TTC

- The SHARP TTC is committed to staying true to the original wording and intent of the SHARP proposals, as crafted by the Sherwin Working Group, and will therefore not revisit or revise any part of any recommendation unless warranted by agency sideboards or other opportunities or constraints as identified by land management agencies such as the INF.

- This map is for informational purposes and may not have been prepared for, or be suitable for legal, engineering, or surveying purposes. Users of this information should review or consult the primary data and information sources to ascertain the usability of the information.

