

ROCK COMPARTMENT WILD LIFE REPORT

USFS, Inyo National Forest

1981

ROCK COMPARTMENT

<u>SPECIES</u>	<u>HABITAT ON STRATA</u>	<u>STATUS</u>	<u>SPECIAL HABITAT COMPONENTS</u>
Mule Deer	All	Common-All Holding Areas	Bitterbrush/Coniper
		Transition	Bitterbrush/Coniper
		Fawning and Summer Range	Bitterbrush/Willows/Aspen Coniper Saplings Lower Slope
		Key Deer Range	Riparian-Meadows-Edges Coniper Needles
Blue Grouse	All	Common	Riparian-Meadow-Edges Brush Fields Down Logs Class I-II
Sage Grouse	Artr/Grass Forbs	Rare 1971 Sightings No Leks	Riparian-Meadows-Edges Brood Rearing Areas
Pine Marten	Large-Mature-Old Growth Timber	Expected-Common	Riparian-Meadows-Edges Down Logs Class I-II Snags $\geq 15'$ ht $\geq 15''$ DBH Canopy Closure $\geq 30\%$
Goshawk (Sensitive)	Large Mature-Old Growth Timber	Expected-Rare	Canopy Closure $\geq 30\%$ Riparian Snags Down Logs Class I-II
Mountain Beaver	Riparian	Expected Rare	Meadow-Edge
Brown Creeper	Large-Old Growth	Expected-Uncommon	Old-Mature Timber Stands Dense Canopy Closure $\geq 70\%$ Snags $\geq 15'$ ht $\geq 10''$ DBH Down Logs Class I

<u>Species</u>	<u>Habitat or Strata</u>	<u>Status</u>	<u>Special Habitat Components</u>
Hairy Woodpecker	Large-Mature Timber	Expected-Uncommon	Large-Mature Timber Canopy Closure-Open Snags $\geq$ 15' ht. $\geq$ 10" DBH Riparian-Edge
Williamson's Sapsucker	Lodgepole	Expected-Uncommon	Mature Timber Canopy Closure-Low to Intermediate Snags $\geq$ 15' ht. $\geq$ 12" DBH
Yellow-Bellied Sapsucker	Aspen-Riparian	Uncommon	Snags $\geq$ 15' ht $\geq$ 10" DBH Mature Stands Riparian-Edge
Yellow Warbler	Riparian	Common	Shrubs-Trees-Edges
Pgmy Nuthatch	Jeffrey	Expected-Uncommon	Mature Forest Canopy Closure-Dense Snags $\geq$ 30' ht $\geq$ 12" DBH Edges-Riparian
Vesper Sparrow	Artr/Grass Understory	Expected-Uncommon	(Meadows) Open Canopy-Artr.
Prairie Falcon (Sensitive)	Cliffs 30-400'	Expected-Uncommon	Ledge in Cliff Overlooking Artr./Purshia Snags-Perches
<u>TARGET SPECIES</u>			
Spotted Owl (Sensitive)	Mature-Old Growth	Non-Existent-Rare	Canopy Closure $\geq$ 40% Two Story Stands Riparian (Perm Water) Snags $\geq$ 30' ht $\geq$ 20" DBH Drainage Down Logs Class I-II

<u>Species</u>	<u>Habitat or Strata</u>	<u>Status</u>	<u>Specia. Habitat Components</u>
Pgmy Owl	Conifers-Meadows Edge	Expected-Uncommon	Snags $\geq$ 6' ht $\geq$ 12" DBH Riparian-Meadow-Edge Nesting-Woodpecker Holes Downlogs-Feeding
Flammulated Owl	Jeffrey-All	Expected-Uncommon	Snags $\geq$ 6' ht $\geq$ 12" DBH Nesting Cavity Excavated by Common Flicker →Edges Canopy Closure-Open Flat-Moderate Slope

ROCK COMPARTMENT SURVEYS NEEDED

<u>SPECIES</u>	<u>SURVEY</u>	<u>TIME</u>	<u>WHERE</u>
Mule Deer	Pellet Trasects	June	Anderson (Map)
	Fawning Areas	Mid-July	Chapparal-Aspen
	Migration Routes	Spring-Summer	Whole Area
	Holding Areas	April May	Flats
	Key Habitat		
Pine Marten	Hair Snares	Summer	Large Old Growth
	Live Trapping	Summer	Riparian Drainages
	Snag Transects	Summer	Meadow-Edges
	Down Log Transects	Summer	
	<del>Scat</del> <del>Seat</del> Analysis	Summer	
Key Habitat			
Blue Grouse	Key Habitat	Summer	Meadows <sup>Fir-</sup> Edges-Aspen
Goshawk	Transects	March-June	Mature Old Growth $\geq$ 30% Canopy Closure
	Key Habitat		Riparian
Mountain Beaver	Burrows-Haypiles	Summer	Riparian-Edge
Brown Creeper	Breeding Bird	June	Mature-Old Growth
	Snag Transects		Canopy Closure $\geq$ 70%
	Key Habitat		
Hairy Woodpecker	Breeding Bird	June	Mature-Old Growth
	Snag Transects		Open Stands
	Riparian		
Williamson Sapsucker	Breeding Bird	June	Mature Logepole
	Snag Transects	<u>Low-Intermediate</u>	Canopy $\longrightarrow$
	Down Logs		
Yellow Bellied Sapsucker	Breeding Bird	June	Riparian
	Snag Transect		
Yellow Warbler	Breeding Bird	June	Riparian
Pgmy Nuthatch	Breeding Bird	June	Mature Jeffrey Dense canopy Edges-Riparian
Sage Grouse	Pellet Transects	July	Artr./Purshia Riparian-Meadows
Vesper Sparrow	Breeding Bird	June	Artr. <sup>F</sup> Purshia/Grass
Prairie Falcon	Cliff Survey	May-June	Cliffs

Spotted Owl	Owl Call Survey Down Logs Snag Transects	April-June	Two Story Mature Timber $\geq$ 40% Canopy Riparian Drainages
Pgmy Owl	Owl Call Survey Snag Transects	April-May	Conifer-Edge-Meadows Riparian
Flammulated Owl	Owl Call Survey Snag Transects	April-May	Jeffrey-Edge-Meadows-Brush Open Canopy Flat-Moderate Slopes

## DATA NEEDED

### MULE DEER SURVEY

- Pellet counts near old transects, fawning areas, holding areas and migration routes
- Determine deer use days for key areas
- Determine key habitat and parameters of (map out)
  - 1) Fawning areas, in acres
  - 2) Holding areas, in acres
  - 3) Migration routes, by number of trails *and miles (ft.)*
- Determine enhancement areas (map out)
  - Cover/forage improvements
  - Fawning
- Determine browse/grass-forb utilization of key areas and availability
- Quantity and quality of habitat in acres  
map out by the different habitat

### PINE MARTEN

- Delineate key areas (map out)
  - Mature old growth timber
  - Riparian areas-Drainages
  - Edges - Meadow
  - # of snags/acre
  - # of down logs/acre *and class*
  - Quantity and quality of habitat in acres
- Delineate enhancement areas (map out)
  - Snags - how many
  - Down logs - how many

### BLUE GROUSE

- Delineate key habitat (map out)
  - by habitat type, in acres
  - quantity and quality, in acres

### GOSHAWK

- Delineate key areas (map out)
  - Nest grove and tree
- Determine enhancement areas (map out)
  - Snags, water, etc., by type

### MOUNTAIN BEAVER

- Delineate key area (map out)
  - Quantity and quality, of habitat

### MIS BIRDS

- Delineate key areas for each species (map out)
  - Quantity and quality of habitat
- Determine enhancement areas
  - For what species
  - What type - snags, down logs, edge canopy closure improvement meadow, etc.

### PRAIRIE FALCON

- Delineate key <sup>h</sup> habitat (map out)
  - Quantity and quality of habitat in acres
  - Nest area
  - Foraging areas
- Determine enhancement areas (map out)
  - Potential nest and foraging sites
  - Potential blasting for nest lodges
  - Perches, etc.

### SPOTTED OWL

- Delineate key areas (map out)
  - Nest site
  - Territory
  - Riparian
  - Quantity and quality of habitat by acres
- Determine enhancement areas and opportunities (map out)
  - Snags, logs, tree topping

### PGMY OWL

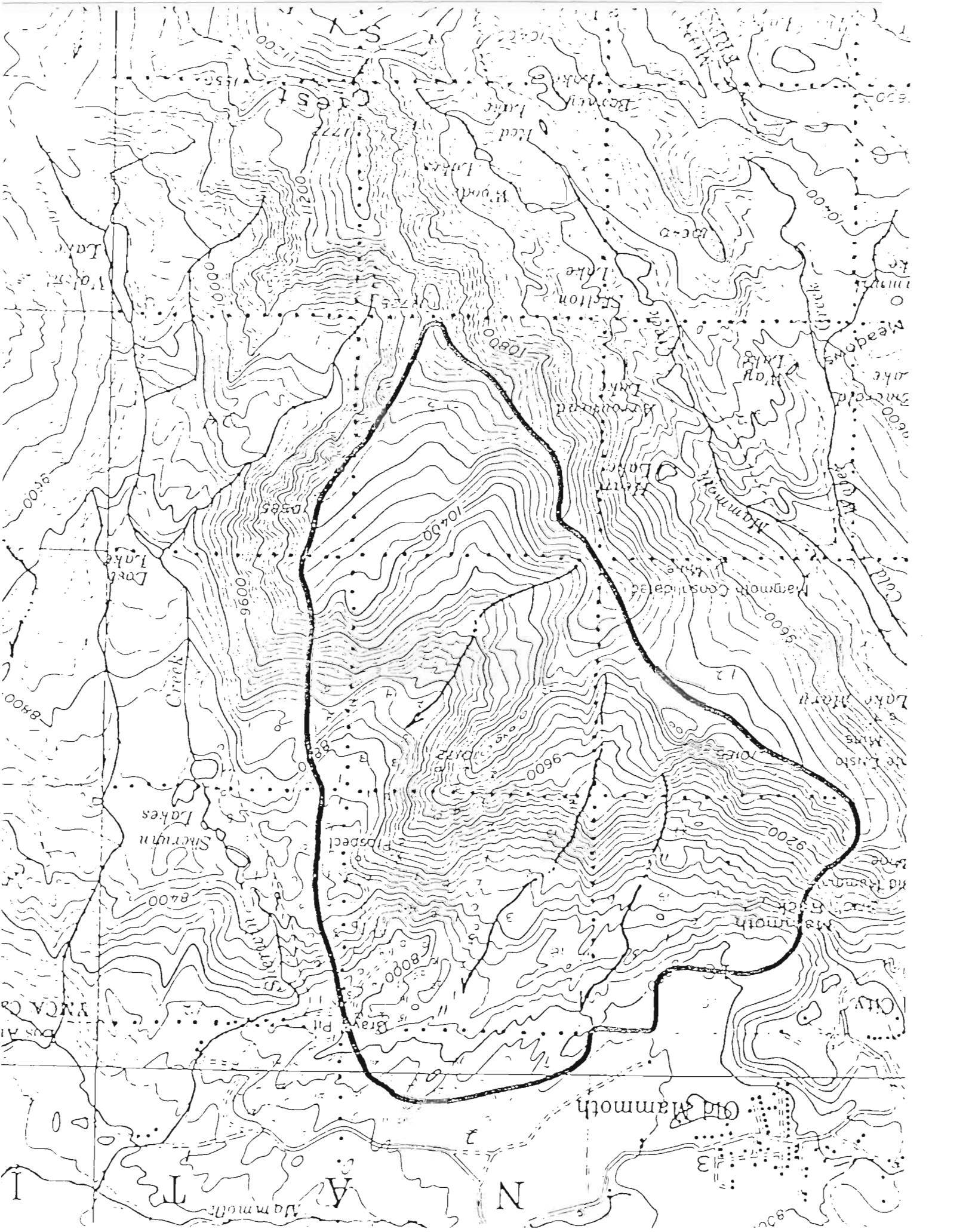
- Delineate key areas (map out)
  - Quantity and quality of habitat
  - Forest - edge



- Determine enhancement areas and opportunities (map out)
  - Snags
  - Edge
  - Cavities
  - Down Logs

FLAMMULATED OWL

- Delineate key areas (map out)
  - Quantity and quality in acres
  - Edge
- Determine enhancement areas and opportunities (map out)
  - Canopy closure
  - Edge
  - Cavities
  - Snags



N A T I

Old Mammoth

N City

Mammoth

Old Mammoth Mine

St. Crispin Mine

Lake Mary

Cold Creek

Mammoth Consolidated Mine

Heart Lake

Arrowhead Lake

Way Lake

Emerald Lake

Meadows

Samuel Lake

Deer Lakes

10640

10400

0800

10400

10640

10400

0800

10400

0800

10400

0800

10400

N

A

T

I

Mammoth

Bray's Pit

Prospect

Sherwin Lakes

Creek

Lost Lake

Heart Lake

Arrowhead Lake

Way Lake

Emerald Lake

Meadows

Samuel Lake

Deer Lakes

Eshton Lake

Wood Lake

Red Lake

Barnes Lake

Crest

Deer Lakes

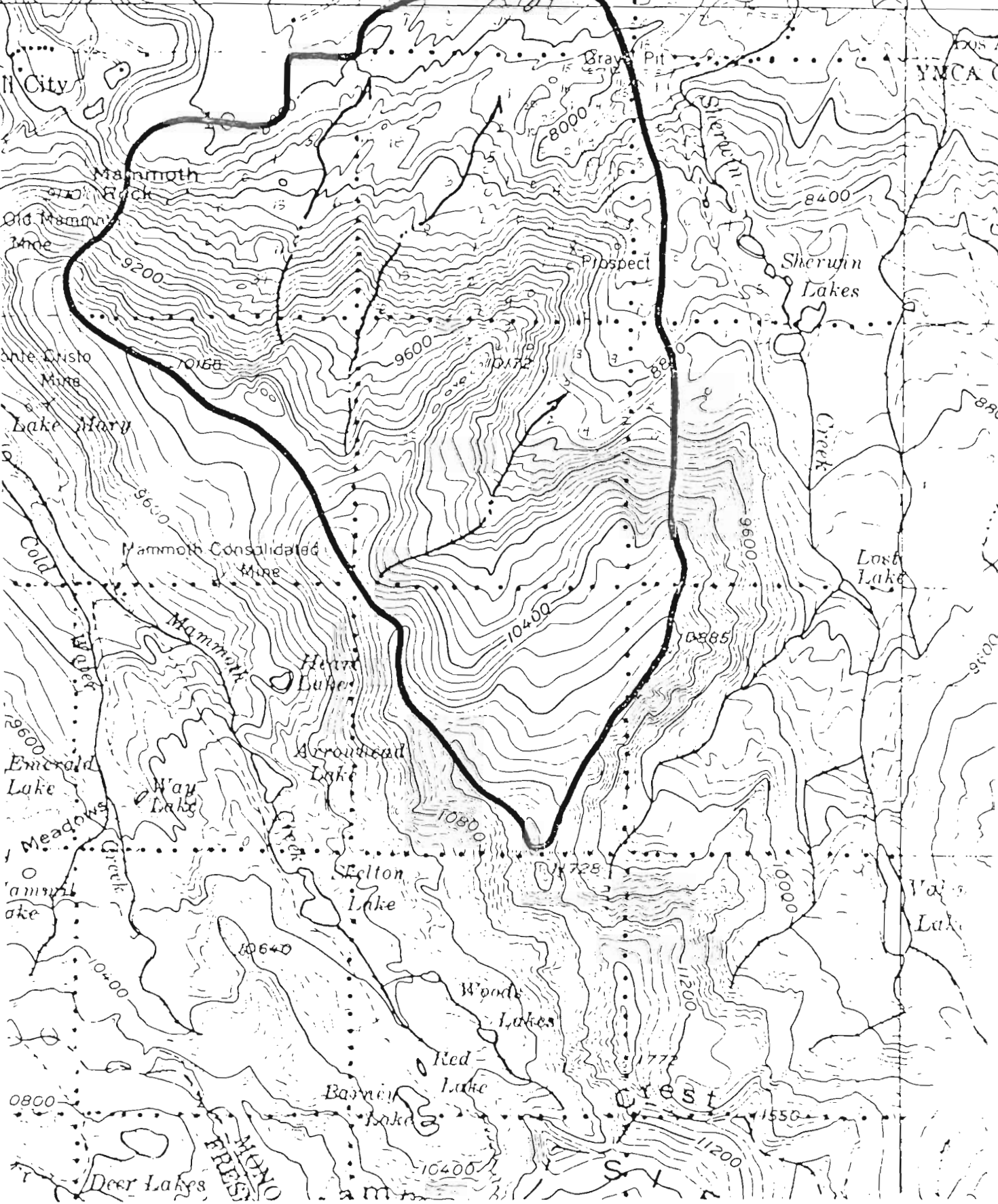
MINO

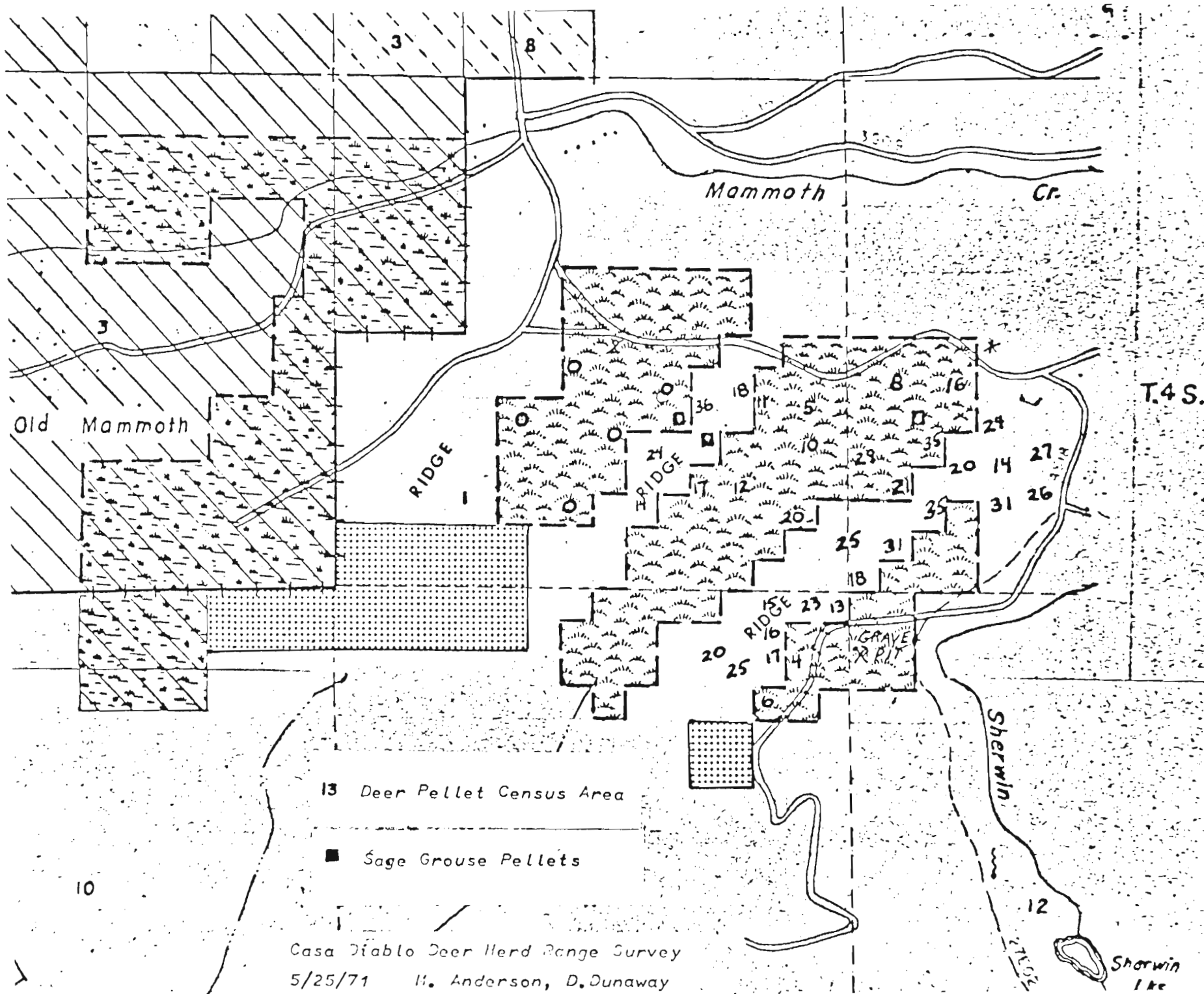
am

S

YMCA

Vain Lake





SALE AREA BETTERMENT  
AND  
K-V COLLECTION PLAN  
(See instructions in FSM 2477)

1. SALE AREA DESIGNATION

2. LEGAL  
COLLECTION  
LIMIT

(Acres to be cut over)

(5-Yr. Av. Planning Cost)

(Legal Collection Limit)

X \$

= \$

3. ESTIMATED VOLUME (MBF)

4. ESTIMATED STUMPAGE DEPOSITS (incl. K-V)

5. ADMINISTRATIVE LIMIT

\$

6. TREATMENT	7. UNIT	8. TOTAL SAG NEEDS			9. PLANNED FOR K-V FINANC		
		NO. OF UNITS	COST/UNIT	COST	NO. OF UNITS	COST/UNIT	COST
			\$	\$		\$	\$
10. TOTAL DIRECT COSTS							
11. INDIRECT COSTS:							
a. RANGER DISTRICT							
b. SO., R.O., M.O.							
12. TOTAL AMOUNT NEEDED AND PLANNED COLLECTION							

13. REMARKS:

PREPARED BY →	SIGNATURE	TITLE	DATE
RECOMMENDED BY →	SIGNATURE	TITLE	DATE
APPROVED BY →	SIGNATURE	TITLE	DATE