



## Winter 2017 Draft Report

Alignment Proposals for the Inyo National Forest and the Town of Mammoth Lakes

Map ID #W10a

April 11, 2017





**Map ID #W10a Key Agreements  
As of April 11, 2017**

- A. Alignment:** This trail is intended to be a non-motorized groomed (corduroy, but no Nordic track) connector from the Sherwins Trailhead (Borrow Pit Staging Area) to Mammoth Creek Park East at the bridge (following the alignment of SHARP ID #S06).
- 1. Trailhead and Destination(s):** Sherwins Trailhead (Borrow Pit Staging Area), the bridge near Hayden Cabin (see Summer Map ID #S25), and Mammoth Creek Park East.
  - 2. Naming:** Hayden Cabin Winter Trail
  - 3. Control Points/Narrative:** See SHARP ID #S06, including notes and direction regarding summer signage placement to accommodate winter grooming.
  - 4. Map Reference:** SHARP TTC: Map ID #W10a, 03/15/17
- B. Design Specifications:**
- 1. Trail Type:** Type 4 (Shared Multi-Use)
  - 2. Users:** Non-motorized
  - 3. Width:** Tread 15' to 20'
  - 4. Grade:** Grades less than 5%.
  - 5. Surface:** Groomed trail with corduroy.
  - 6. Features:** None
  - 7. User Experience/Aesthetics:** This trail is intended to provide a groomed trail (corduroy, but no Nordic track) that encourages and facilitates use of Mammoth Creek Park East as an alternate staging area and will provide connectivity between the park, the Sherwins Trailhead (Borrow Pit Staging Area), the stacked-loop trail system (SHARP ID #W09a), the Mammoth Lakes Trail System, and formal access/egress points along the meadow's northern boundary.
  - 8. Trail Amenities:** Trail amenities and facilities will be limited to signage. This trail will utilize the summer signage for SHARP ID #S06 that will likely not be buried in snow during future winters.
- C. Winter/Summer Interface:** SHARP ID #W10a follows the alignment of SHARP ID #S06. Summer signage will need to be placed so that they do not hinder or obstruct winter grooming to the minimum footprint of a small Piston Bully (grooming width of 14 feet) or see the width dimension of multi-use pathway tunnels as defined in the *Town of Mammoth Lakes Trail System Master Plan* (Pg. 44).
- D. Signage and Wayfinding Special Considerations:** As directed by the *Mammoth Lakes Trail System Wayfinding and Signage Standards Manual*.



**TO BE COMPLETED BY AGENCIES/JURISDICTIONS**









- A. Environmental Review:** "SHARP Projects – NEPA" as submitted to USFS.
- B. Construction & Maintenance:** Town of Mammoth Lakes under CCS and potentially SUP.
- C. Funding Considerations & Ownership:** Funding construction through Measure R and MLTS Trail Facilities Construction Reserve Account; ownership via USFS with maintenance provided by the MLTS.
- D. Cost Estimator:**

<b>Total Length of New Trail (Feet)</b>	<b>4,504 Feet</b>
<b>Groomed/Ungroomed?</b>	Groomed
<b>Estimated Cost per Hour</b>	\$35.00
<b>Groom Time (Minutes)</b>	120 Minutes
<b># Times Groomed/Week</b>	5 Times
<b>Time per Week (Minutes)</b>	600 Minutes
<b># Weeks per Grooming Season</b>	13 Weeks
<b>Estimated # Hrs per Season</b>	130 Hours
<b>Total Estimated Cost Per Season</b>	<b>\$4,550</b>
<b>Rehabilitation Cost</b>	TBD
<b>Total Cost Estimate for SHARP #W10a</b>	<b>\$4,550</b>

- a. **Total Length of New Trail (Feet):** 4,504 Feet
- b. **Total Estimated Grooming Cost/Hour:** The trail will be groomed at a rate of approximately \$35/hr.
- c. **Estimated Cost of Amenities:** None
- d. **Rehabilitation Cost Estimate:** TBD
- e. **First-Guess Cost Estimate:** \$4,550
  - i. **Preferred Alignment:** \$4,550
  - ii. **Alternative Alignment:** None
- E. Other Special Considerations:** Additional engineering analysis will be needed for the existing bridge over Mammoth Creek to ensure that it meets multi-use pathway bridge standards as well as load bearing requirements for winter grooming equipment.

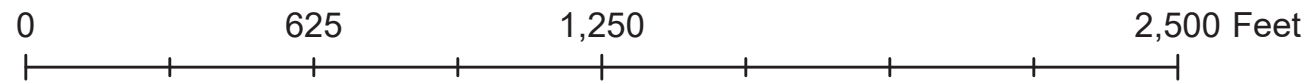
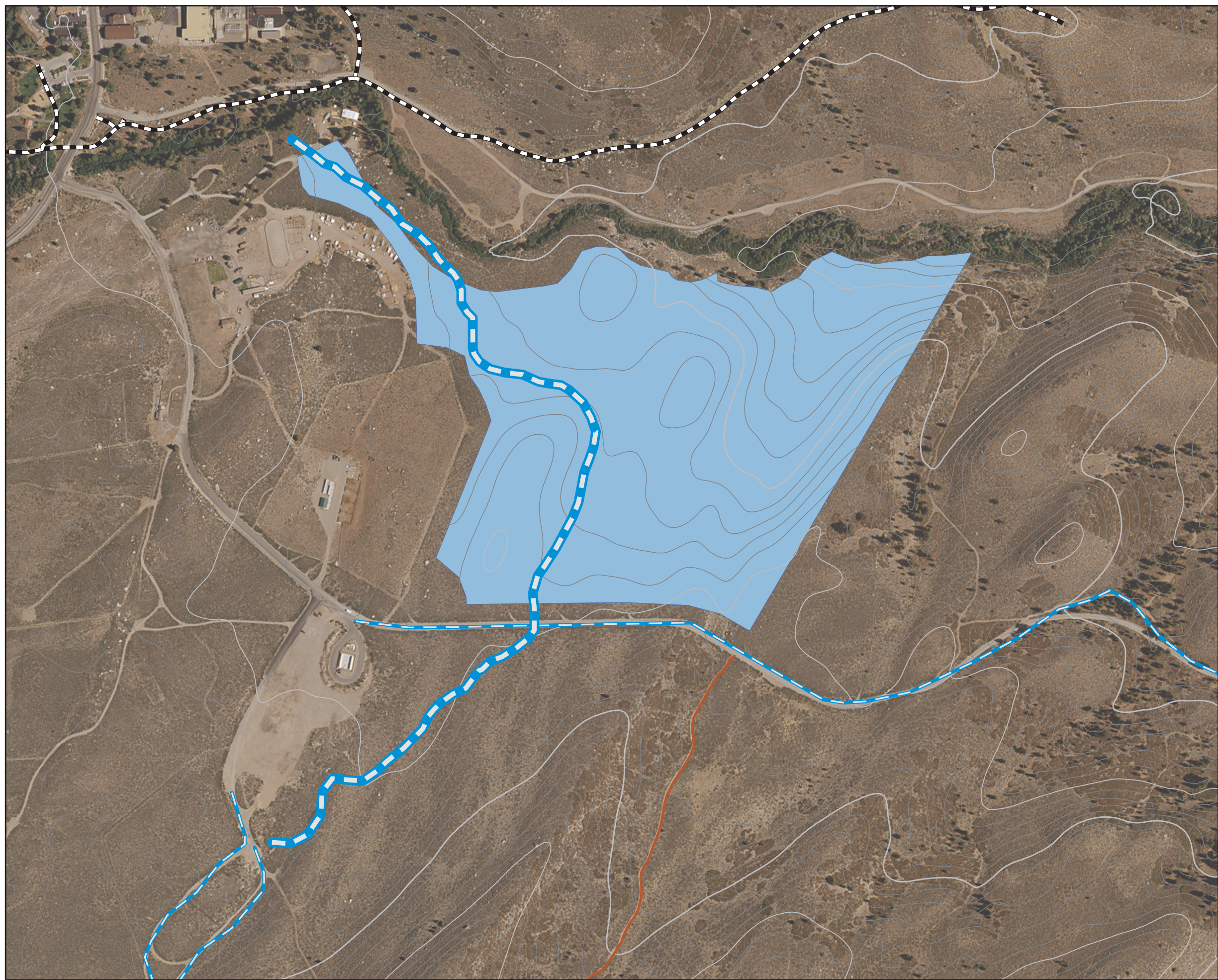
**SHARP TTC: Map ID #W10a**  
**CONCEPT: Non-motorized connector**  
**from the borrow pit staging area to**  
**Mammoth Creek Park East at the bridge.**  
 Develop a groomed connector  
 (corduroy, but no Nordic track) between  
 the borrow pit staging area (see Winter  
 Map ID #1) and Mammoth Creek Park  
 East at the bridge near Hayden Cabin  
 (see Summer Map ID #25). This  
 connector will be open to non-motorized  
 use only and will be consistent with the  
 alignment of the connector  
 described in Summer Map ID #6.  
 Map draft date: 03/15/17

**Legend**

-  SHARP Winter TTC Trail Alignments
-  SHARP Proposed Trails
-  INF Trails
-  MUPS
-  SHARP Proposed Off Leash Dog Area
- 10 ft Contours**
-  Contour Line, Intermediate
-  Contour Line, Major
-  Contour Line, Minor

**SHARP TTC**

- The SHARP TTC is committed to staying true to the original wording and intent of the SHARP proposals, as crafted by the Sherwins Working Group, and will therefore not revisit or revise any part of any recommendation unless warranted by agency sideboards or other opportunities or constraints as identified by land management agencies such as the INF.
- This map is for informational purposes and may not have been prepared for, or be suitable for legal, engineering, or surveying purposes. Users of this information should review or consult the primary data and information sources to ascertain the usability of the information.





**Project Cover Sheet:  
Map ID #W10a**

<b>SHARP CONCEPT</b>	<b>Non-motorized connector from the borrow pit staging area to Mammoth Creek Park East at the bridge.</b> Develop a groomed connector (corduroy, but no Nordic track) between the Borrow Pit Staging Area (see Winter Map ID #01) and Mammoth Creek Park East at the bridge near Hayden Cabin (see Summer Map ID #25). This connector will be open to non-motorized use only and will be consistent with the alignment of the connector described in Summer Map ID #06.	
<b>SHARP RATIONALE</b>	This trail will encourage and facilitate use of Mammoth Creek Park East as an alternate staging area and will provide connectivity between the park, the Borrow Pit Staging Area, the stacked-loop trail system (see Winter Map ID #09a), the Mammoth Lakes Trail System, and formal access/egress points along the meadow's northern boundary.	
<b>RELATED PROJECTS</b>	SHARP project ID W01 - See the SHARP Winter Proposal for details. SHARP project ID W09a - See the SHARP Winter Proposal for details. SHARP project ID W25 - See the SHARP Winter Proposal for details. SHARP project ID S06 - See the SHARP Summer Proposal for details.	
<b>WORKFLOW CHECKLIST TASK</b>	<b>DATE COMPLETED</b>	
Group overview in-house meeting to present work plan and desired deliverables	January 2017 - March 2017	
Group overview field trip and technical analysis in-house	January 2017 - March 2017	
Drafting/staking	January 2017 - March 2017	
Technical review field trip	January 2017 - March 2017	
Draft revision	January 2017 - March 2017	
Final review meeting	March 16, 2017	
Presentation to USFS	None	
<b>AGENCY SIDEBOARDS</b>	None	
<b>DESIRED OUTSIDE PARTICIPANTS</b>	Town of Mammoth Lakes, Inyo National Forest.	
<b>ENVIRONMENTAL REVIEW</b>	"SHARP Projects - NEPA" as submitted to USFS.	
<b>OTHER NOTES</b>	TBD	
<b>PARTICIPANTS</b>	2017 Participants: Joel Rathje, John Wentworth, Kim Anaclerio, Andrew Mulford, and Kelly Workman	