



Winter 2017 Draft Report

Alignment Proposals for the Inyo National Forest and the Town of Mammoth Lakes

Map ID #S11 North & South

April 11, 2017





**Map ID #S11 North & South Key Agreements
As of April 11, 2017**

- A. Alignment:** This trail is intended to consolidate the multiple use-trails along Mammoth Creek into two parallel system trails: the north-bank trail will be open to all non-motorized use, while the south-bank trail will be designated as non-mechanized (no bicycles). Each trail will begin from Mammoth Creek Park East and head east toward Sierra Meadows Equestrian Center.
- 1. Trailhead and Destination(s):** Mammoth Creek Park East, Shady Rest Park (see Summer Map ID #10), Hayden Cabin (see Summer Map ID #25) and the equestrian stacked-loop system (see Summer Map ID #9b).
 - 2. Naming:** Mammoth Creek North Bank & Mammoth Creek South Bank
 - 3. Control Points/Narrative:** Due to hydrological concerns, additional work and collaboration with USFS will be needed to design sustainable alignments that include connections to existing use-trails located to the east of Hayden Cabin that follow Mammoth Creek.
 - 4. Map Reference:** SHARP TTC: Map ID #S011, 03/15/17
- B. Design Specifications:**
- 1. Trail Type:** Type 2 (Preferred Mountain Bike & Preferred Hike)
 - 2. Users:** Non-motorized.
 - 3. Width:** Tread narrow – less than 36”
 - 4. Grade:** Grades May occasionally steeper than 8% (Preferred Mountain Bike). Grades may occasionally be steeper than 10%, including stair steps (Preferred Hike).
 - 5. Surface:** Native materials
 - 6. Features:** Special trail signage will be needed to clearly differentiate the legal recreation uses of the north bank (open to bikes) and south bank non-mechanized (no bikes) at their intersection.
 - 7. User Experience/Aesthetics:** Creating one trail that permits bikes and one that prohibits them allows users a choice of experience and will mitigate potential conflict with other trail users. The trail on north-bank can link directly into the connector trail to Shady Rest Park (see Summer Map ID #10) as well as provide connectivity for bicycles from the park to Hayden Cabin, a point of historical interest (see Summer Map ID #25).
 - 8. Trail Amenities:** Trail amenities will be limited to signage.
- C. Winter/Summer Interface:** None
- D. Signage and Wayfinding Special Considerations:** As directed by the *Mammoth Lakes Trail System Wayfinding and Signage Standards Manual*.



TO BE COMPLETED BY AGENCIES/JURISDICTIONS

- A. Environmental Review:** “SHARP Projects – NEPA” as submitted to USFS.
- B. Construction & Maintenance:** Town of Mammoth Lakes under CCS and potentially SUP.
- C. Funding Considerations & Ownership:** Funding construction through Measure R and MLTS Trail Facilities Construction Reserve Account; ownership via USFS with maintenance provided by the MLTS.
- D. Construction Cost Estimator:**







Total Linear Feet New Trail Construction	TBD
Total Estimated Cost per Linear Foot	\$5.00
Total Estimated Cost of New Trail Construction	TBD
Type of Amenity (North Bank)	Signage
# of Amenities	5
Cost per Amenity	\$200
Total Cost of Amenities (North Bank)	\$1,000
Type of Amenity (South Bank)	Signage
# of Amenities	5
Cost per Amenity	\$200
Total Cost of Amenities (South Bank)	\$1,000
Total Cost of Amenities	\$2,000
Rehabilitation Cost	TBD
Total Cost Estimate for SHARP ID #S11 North & South Bank	TBD

- a. **Total Linear Feet of New Trail Construction:** TBD
- b. **Total Estimated Cost per Linear Foot:** \$5.00 per linear foot
- c. **Estimated Cost of Amenities:** \$200 for each Type 9a sign.
- d. **Rehabilitation Cost Estimate:** TBD
- e. **First-Guess Cost Estimate:** TBD
 - i. **Preferred Alignment:** TBD
 - ii. **Alternative Alignment:** TBD
- E. Other Special Considerations:** Additional work and collaboration with USFS will be needed to design a sustainable alignment.

SHARP TTC: Map ID #11

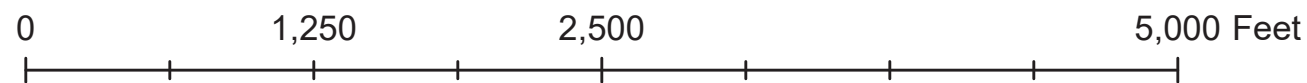
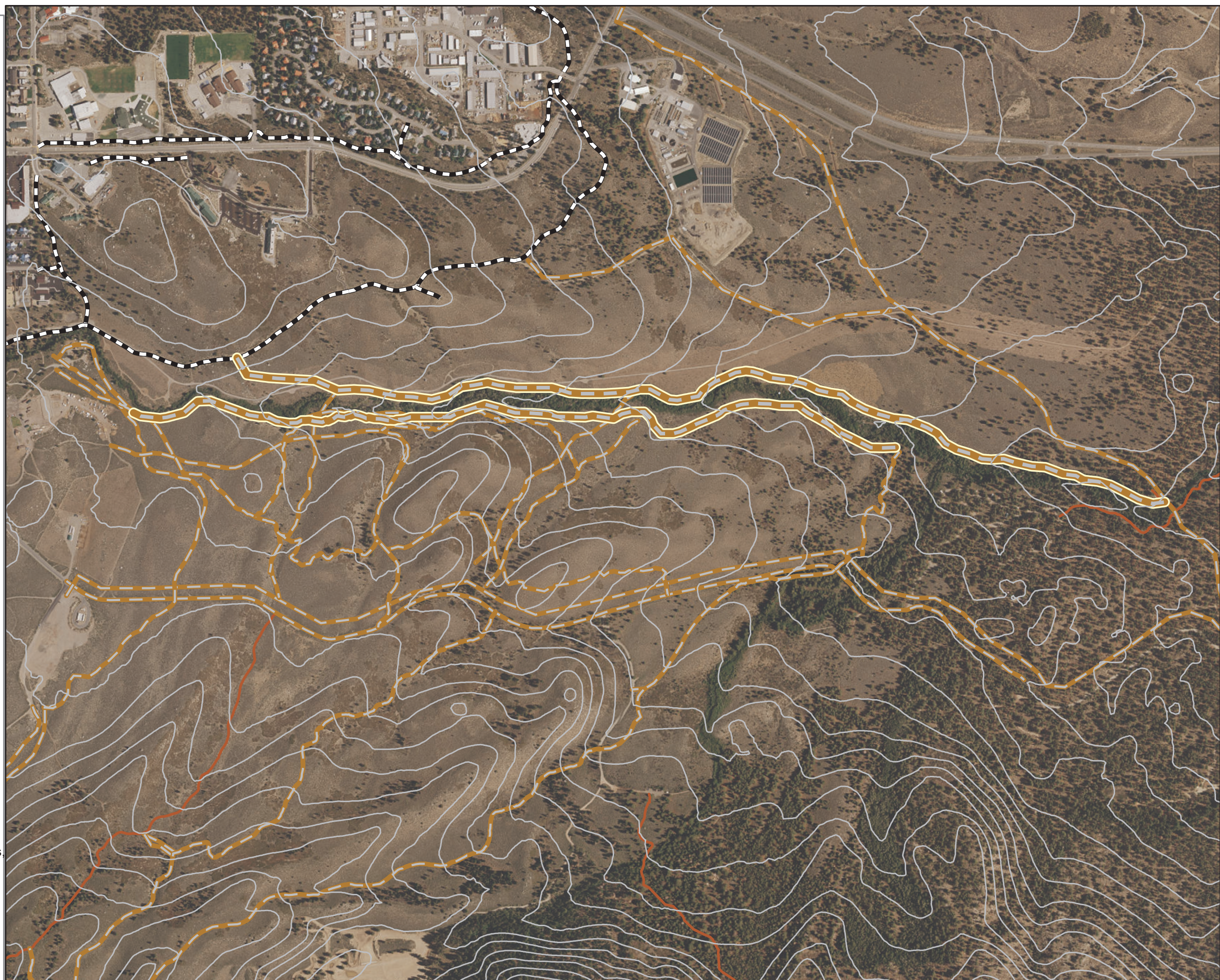
CONCEPT: Soft-surface non-motorized trails along Mammoth Creek
Consolidate the multiple use-trails along Mammoth Creek into two parallel system trails: the north-bank trail will be open to all non-motorized use, while the south-bank trail will be designated as non-mechanized (no bicycles). Each trail will begin from Mammoth Creek Park East and head east toward Sierra Meadows Equestrian Center.
Map draft date: 03/15/17

Legend

-  SHARP TTC Trail Alignments
-  SHARP Proposed Trails
-  INF Trails
-  Centerlines
-  MUPS
-  Contour Line, Major

SHARP TTC

- The SHARP TTC is committed to staying true to the original wording and intent of the SHARP proposals as crafted by the Sherwins Working Group, and will therefore not revisit or revise any part of any recommendation unless warranted by agency sideboards or other opportunities or constraints as identified by land management agencies such as the INF.
- This map is for informational purposes and may not have been prepared for, or be suitable for legal, engineering, or surveying purposes. Users of this information should review or consult the primary data and information sources to ascertain the usability of the information.





**Project Cover Sheet:
Map ID # S11 North and South**

SHARP CONCEPT	Soft-surface non-motorized trails along Mammoth Creek. Consolidate the multiple use-trails along Mammoth Creek into two parallel system trails: the north-bank trail will be open to all non-motorized use, while the south-bank trail will be designated as non-mechanized (no bicycles). Each trail will begin from Mammoth Creek Park East and head east toward Sierra Meadows Equestrian Center.	
SHARP RATIONALE	Consolidation of the many existing use-trails into two clearly signed routes on either side of the creek will allow for rehabilitation of the creek’s banks and will prevent further proliferation of social trails. Creating one trail that permits bikes and one that prohibits them allows users a choice of experience and to avoid potential conflict with other trail users. Situating the trails on opposite sides of the creek will assist with enforcement of use restrictions; further, the trail on the north side of the creek can link directly into the connector trail to Shady Rest Park (see Summer Map ID #10). Additionally, the north-side trail provides connectivity for bicycles from the park to Hayden Cabin, a point of historical interest (see Summer Map ID #25).	
RELATED PROJECTS	SHARP project ID #S07 - See the SHARP Summer Proposal for details. SHARP project ID #S09b - See the SHARP Summer Proposal for details. SHARP project ID #S10 - See the SHARP Summer Proposal for details. SHARP project ID #S25 - See the SHARP Summer Proposal for details.	
WORKFLOW CHECKLIST TASK	DATE COMPLETED	
Group overview in-house meeting to present work plan and desired deliverables	January 2017 - March 2017	
Group overview field trip and technical analysis in-house	January 2017 - March 2017	
Drafting/staking	January 2017 - March 2017	
Technical review field trip	None	
Draft revision	March 16, 2017	
Final review meeting	March 16, 2017	
Presentation to USFS	None	
AGENCY SIDEBARDS	None	
DESIRED OUTSIDE PARTICIPANTS	Town of Mammoth Lakes, Inyo National Forest	
ENVIRONMENTAL REVIEW	"SHARP Projects - NEPA" as submitted to USFS.	
OTHER NOTES	None	
PARTICIPANTS	2017 Participants: Joel Rathje, John Wentworth, Andrew Mulford, Kim Anaclerio, and Kelly Workman.	