

The Eastern Sierra Recreation Collaborative Final Gateway Communities Meeting



Cerro Coso Community College – Bishop

August 15, 2016





Voices for Eastern Sierra Recreation

“Kick Off Meeting”



Oct 14, 2014 - Bishop - Cerro Coso Community College

**WHAT RECREATION VALUES, PRINCIPLES, OR GUIDELINES DO WE WANT TO SEE INCLUDED IN THE
INYO NATIONAL FOREST MANAGEMENT PLAN REVISION?**

STEWARDSHIP AND PARTNERSHIP	DIVERSE USE AND EXPERIENCES	RESOURCE PROTECTION	COMMUNICATION INFRASTRUCTURE	HEALTHY AND SUSTAINABLE	ACCESS FOR ALL
<input checked="" type="checkbox"/> Culture Of Partnership and Citizen Stewardship <input checked="" type="checkbox"/> Maintain Positive Passion of Users <input checked="" type="checkbox"/> Community Stewardship of the Forest (and Vice Versa) <input checked="" type="checkbox"/> Facilitate Opportunities for Stewardship <input checked="" type="checkbox"/> Designated Role for Communities and Groups <input checked="" type="checkbox"/> Not Limited by Agency (USFS) Lack of Resources <input checked="" type="checkbox"/> Instill a Land Ethic to Engender Ownership and Responsibility	<input checked="" type="checkbox"/> Allowance for Broad Recreation Users & Types <input checked="" type="checkbox"/> Provide for a Diversity of Experiences <input checked="" type="checkbox"/> Respecting Others' Values & Differences <input checked="" type="checkbox"/> Provide for Primitive Recreation Opportunities <input checked="" type="checkbox"/> Balanced, Sustainable Opportunities for High Quality Recreation Experiences <input checked="" type="checkbox"/> Solitude	<input checked="" type="checkbox"/> Better Management of Wilderness and Front Country Alike <input checked="" type="checkbox"/> Protection of rare and Sensitive Plant and Animal Species & Habitat <input checked="" type="checkbox"/> Manage the Forest to Avoid Catastrophic Wildfire <input checked="" type="checkbox"/> Common Sense Site Specific Management <input checked="" type="checkbox"/> Limit Night Lighting – Forests Should Be Dark	<input checked="" type="checkbox"/> Education on the Trail and Clear Signage <input checked="" type="checkbox"/> Adequate Signage <input checked="" type="checkbox"/> Maps Based on Type of Use <input checked="" type="checkbox"/> Welcoming, Functioning, Well-Maintained Facilities <input checked="" type="checkbox"/> Caring, Ample, Professional USFS Staff That Fosters Problem Solving Through Creativity	<input checked="" type="checkbox"/> Healthy & Contiguous Habitat for Wildlife Dispersal <input checked="" type="checkbox"/> No Negative Impact to Environment or Resources <input checked="" type="checkbox"/> Maintain and Preserve Health of Land, Plants, & Animals Through Sustainable Use <input checked="" type="checkbox"/> Balance Recreation with Preservation <input checked="" type="checkbox"/> Solitude	<input checked="" type="checkbox"/> Diverse, Accessible, Welcoming Language & Information <input checked="" type="checkbox"/> "This Land Is Our Land" <input checked="" type="checkbox"/> More Kids in the Forest

“Gateway Communities Meetings”



Oct 28 2014 – Big Pine – Big Pine Town Hall

Oct 30 2014 – June Lake – June Lake Community Center



“Finalizing a Recreation Strategy”



Jan 14, 2015 - Bishop - Cerro Coso Community College



**Eastern Sierra Recreation Collaborative
Proposed Recreation Strategy**

Prepared in Support of the
Inyo National Forest Management Plan Revision

January 26, 2015

<http://eastsierrarec.org>

<http://mltpa.org/advocacy/esrc-public-meeting-information>



**52 Desired Conditions
Spread over the 6 ESRC
“Values, Principles and
Guidelines” that make up
the ESRC “Recreation Lens”**

ESRC Value = Stewardship and Partnership

Desired Conditions	Objectives	Standards	Guidelines
1. Community Steward Programs	Establish community financed interpretive programs to educate public about ecology, history, LNT, culture of an area	Assign appropriate staff person to facilitate agreements with INF to provide volunteers	Interpretive staff either paid or provided by volunteers
2. Forest Service collaboration with community groups	-INF will actively collaborate with community groups to address management and recreation goals -INF should also collaborate with tribal leadership as to management and location of sacred land and burial sites	Partnerships should include a broad variety of groups to represent the diversity of uses and interests on the forest	The INF and community groups will have established partnership structures to facilitate communication
3. Repair trails and bridges with community stewardship as appropriate	Engage more partners for front country & backcountry trail repair and maintenance by doubling MOU's in the next 5 years	Create outreach program to engage partners – clearly communicate project guidelines	Identify and publish/ promote projects that could be implemented by partners
4. Stewardship opportunities for visitors and residents	-Expand on the ground stewardship capacity through establishment of local stewardship groups in each “gateway community” -Provide 20 stewardship projects for out of town groups per year	Ensure projects occur in each community and addresses more than one “use”	-Streamline and prioritize facilitation of local and regional groups stewardship project requests -Where possible provide free or low cost facilities for stewardship groups (e.g. campground)
5. Improve partnerships and their ability to work on forest	INF hires or designates a coordinator specifically to work with partnership groups	INF being proactive in seeking out partnership objectives	Develop with partners a volunteer stewardship corps



Eastern Sierra Recreation Collaborative Proposed Recreation Strategy

Prepared in Support of the
Inyo National Forest Management Plan Revision

January 26, 2015

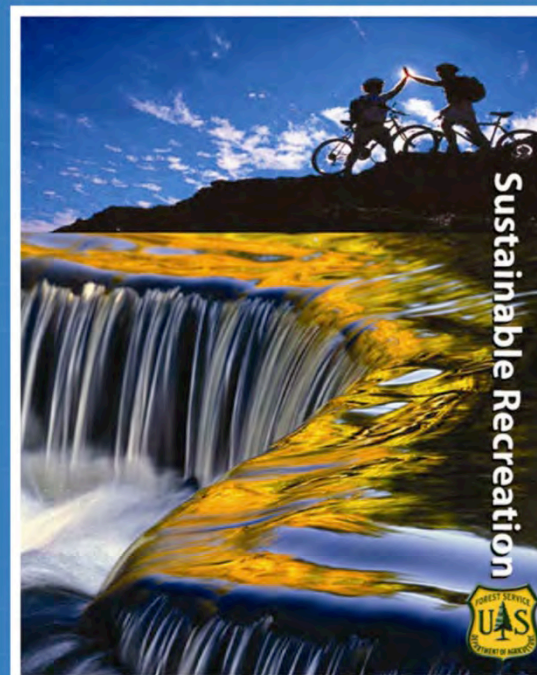
<http://eastsierrarec.org>

<http://mltpa.org/advocacy/esrc-public-meeting-information>



Connecting People with America's Great Outdoors:

A Framework for Sustainable Recreation

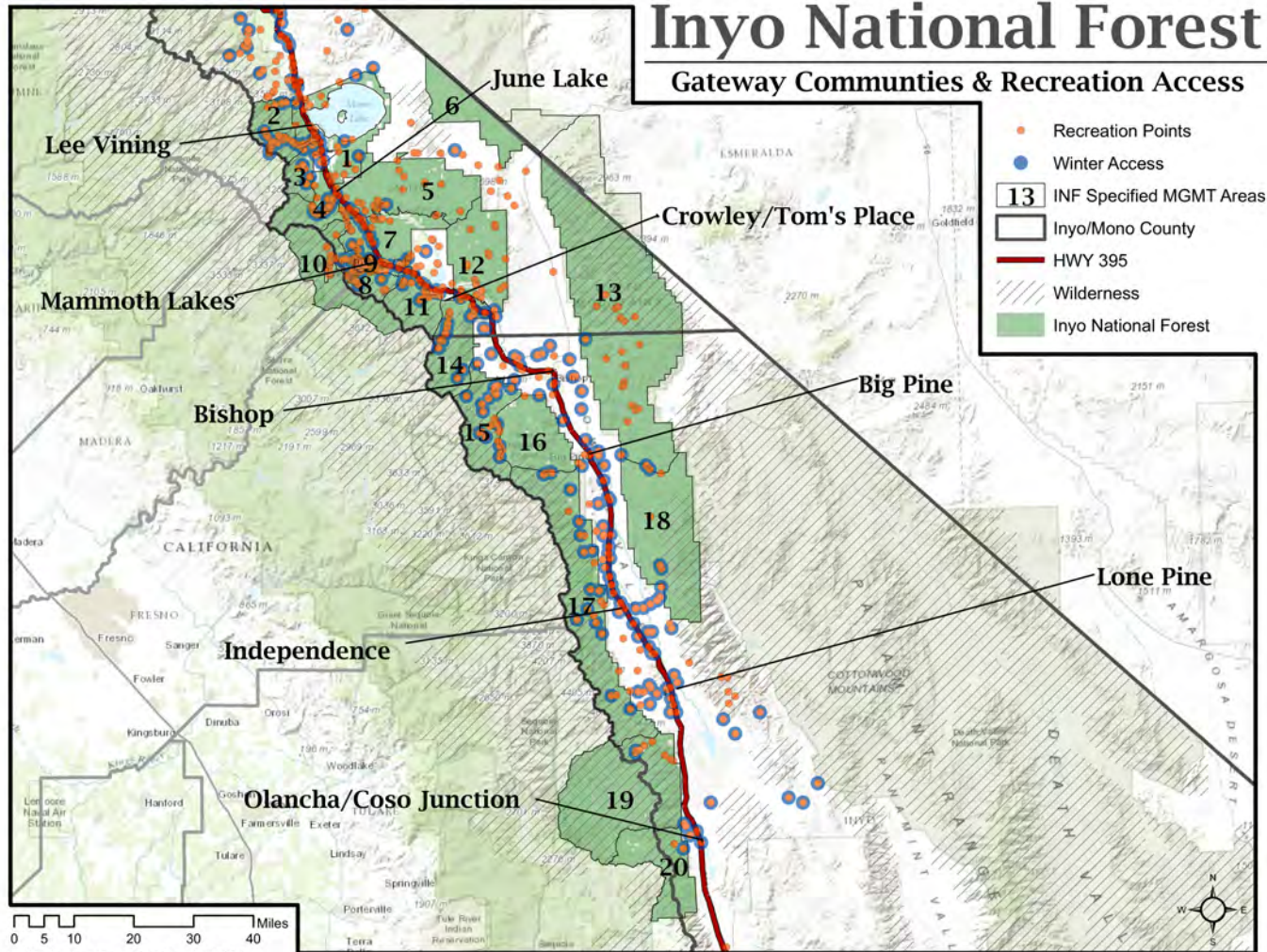


United States Forest Service, USDA
Recreation, Heritage and Volunteer Resources

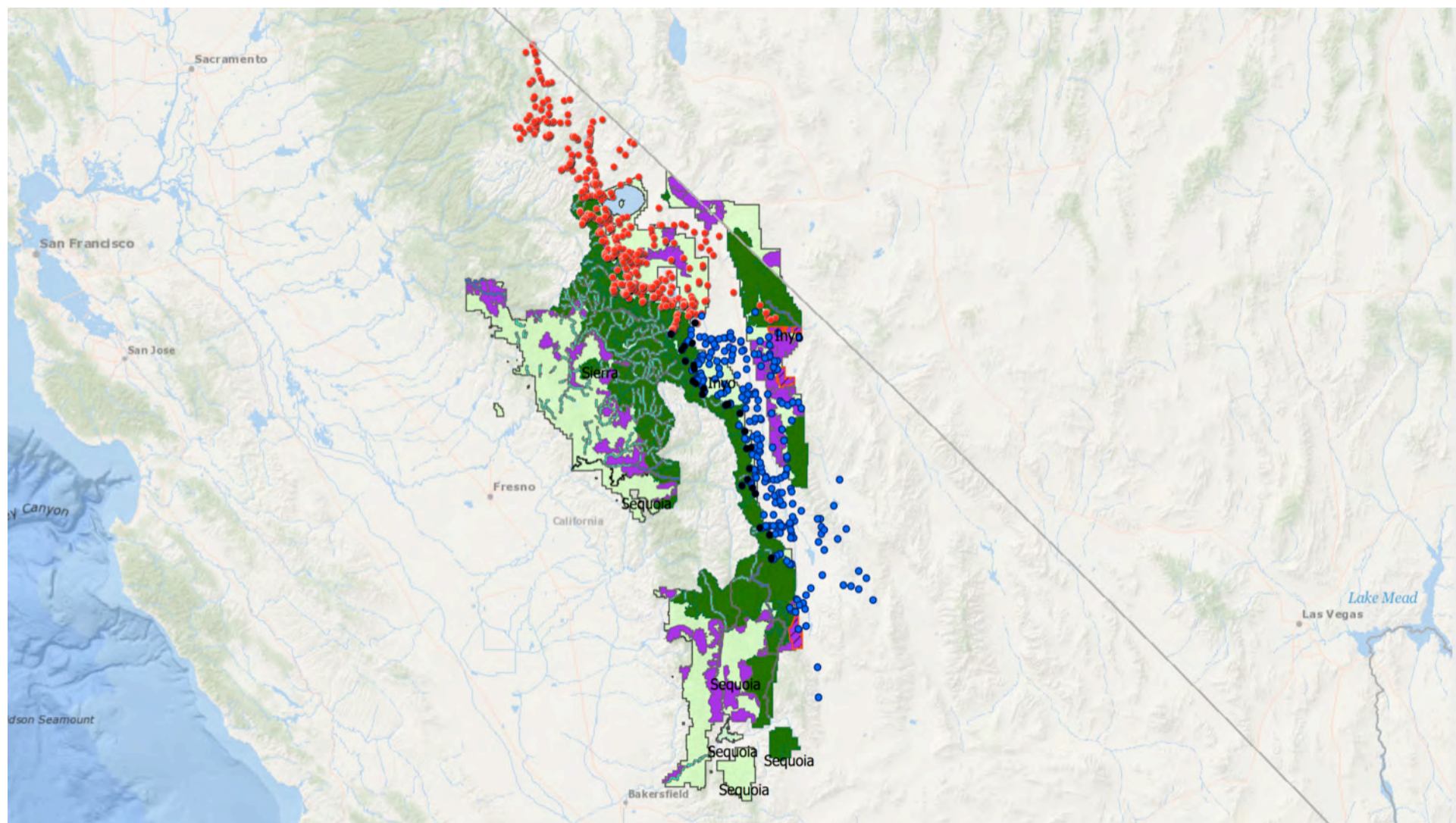
June 25, 2010

Inyo National Forest

Gateway Communities & Recreation Access

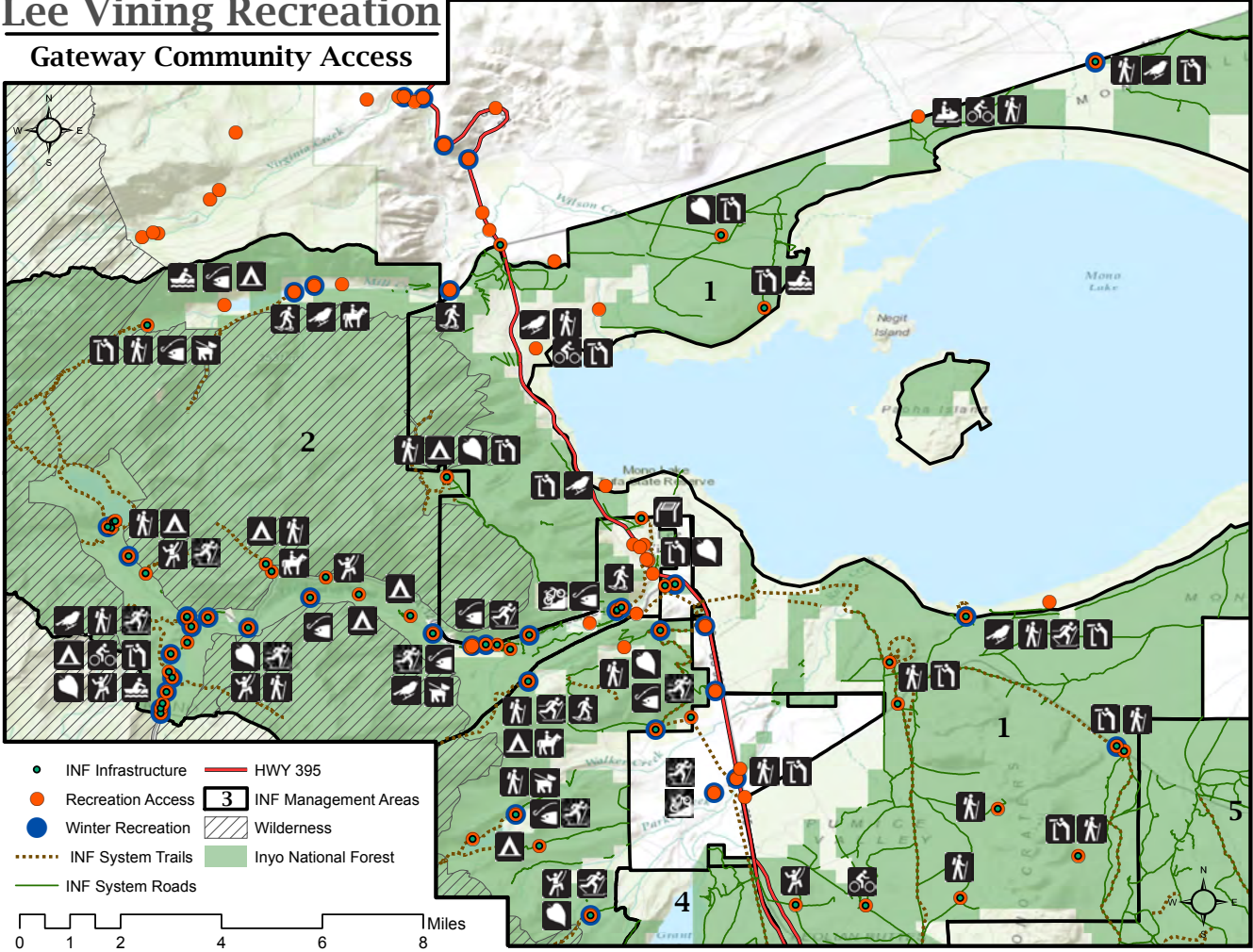


INF_Rec3a - Draft October 14, 2014



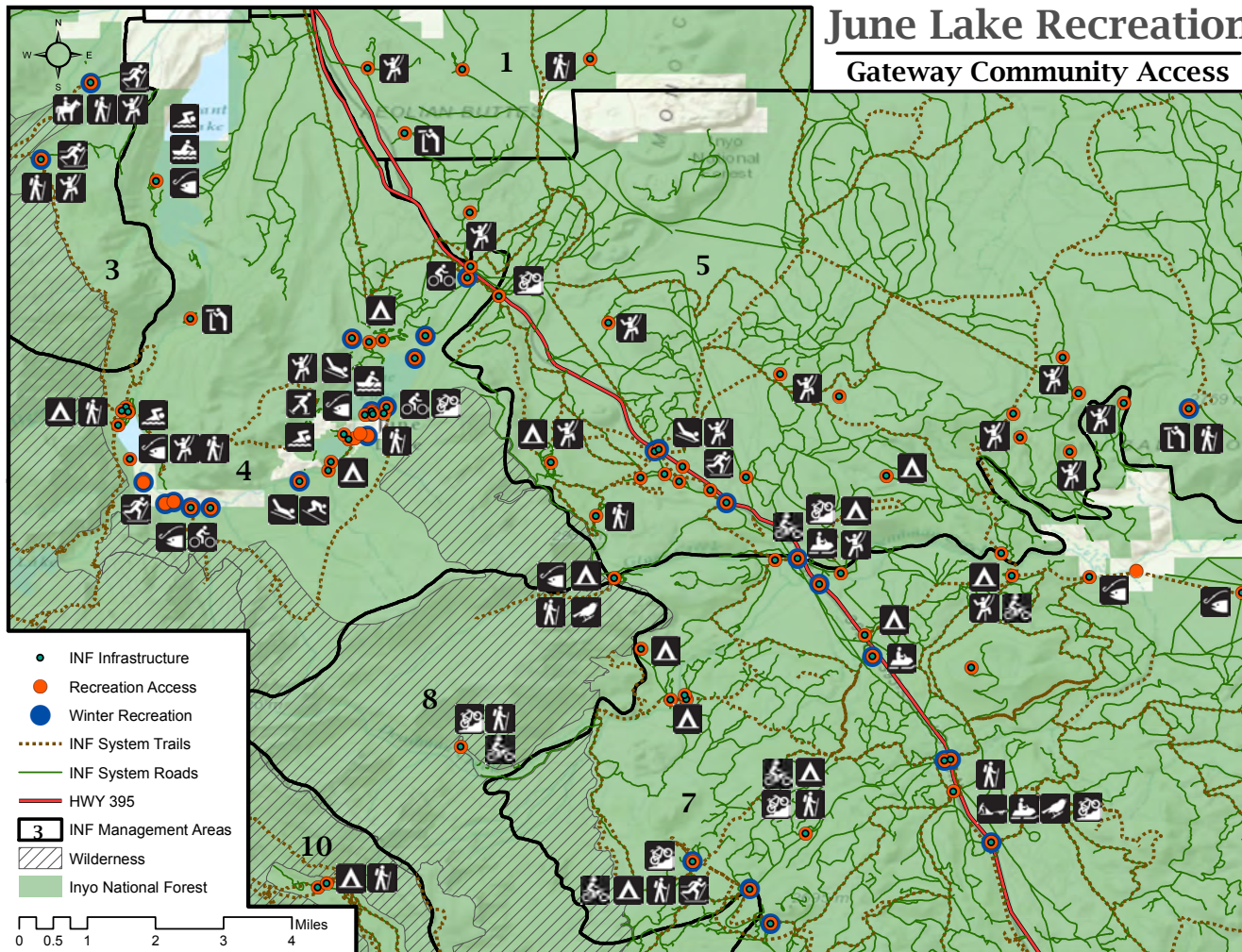
Lee Vining Recreation

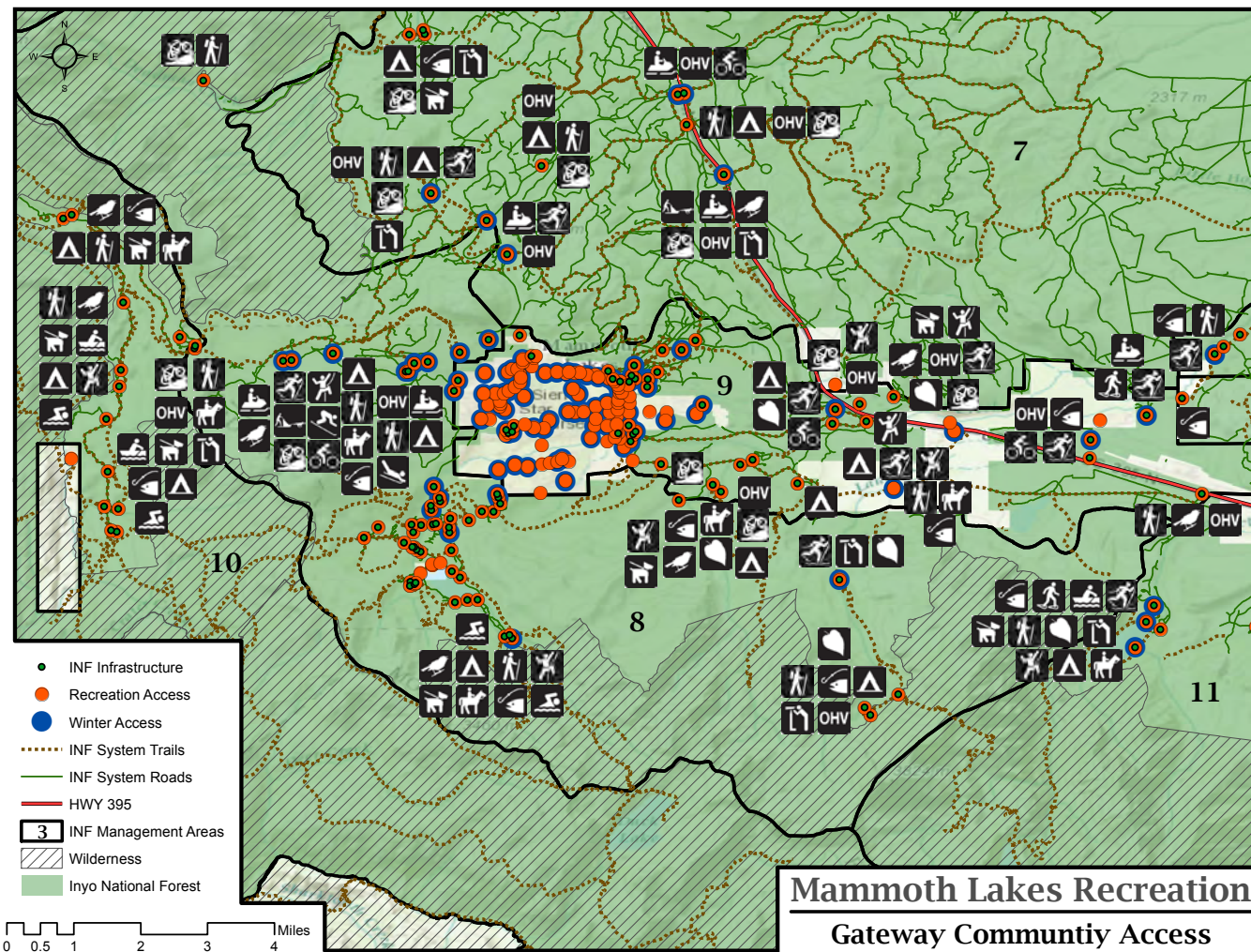
Gateway Community Access



June Lake Recreation

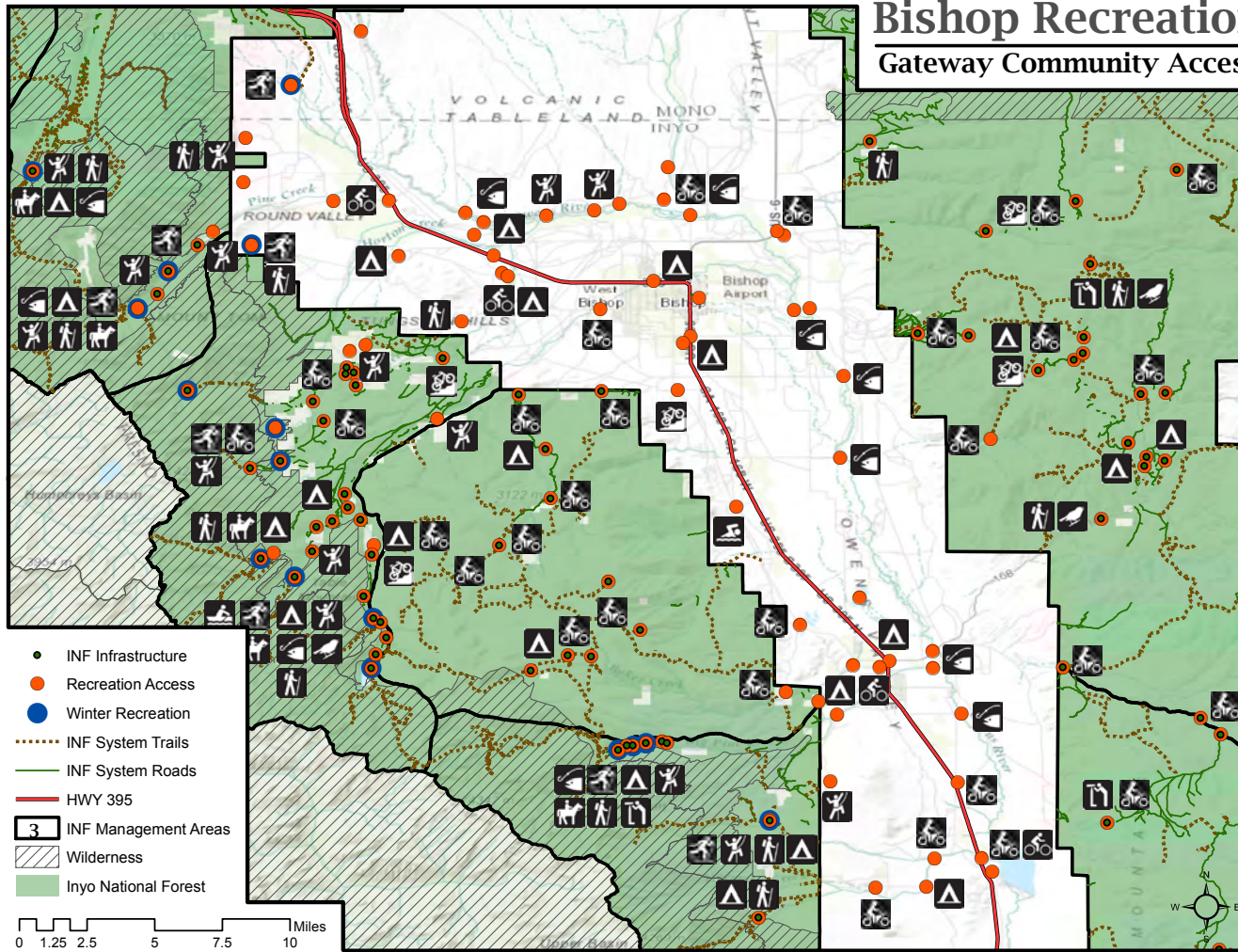
Gateway Community Access





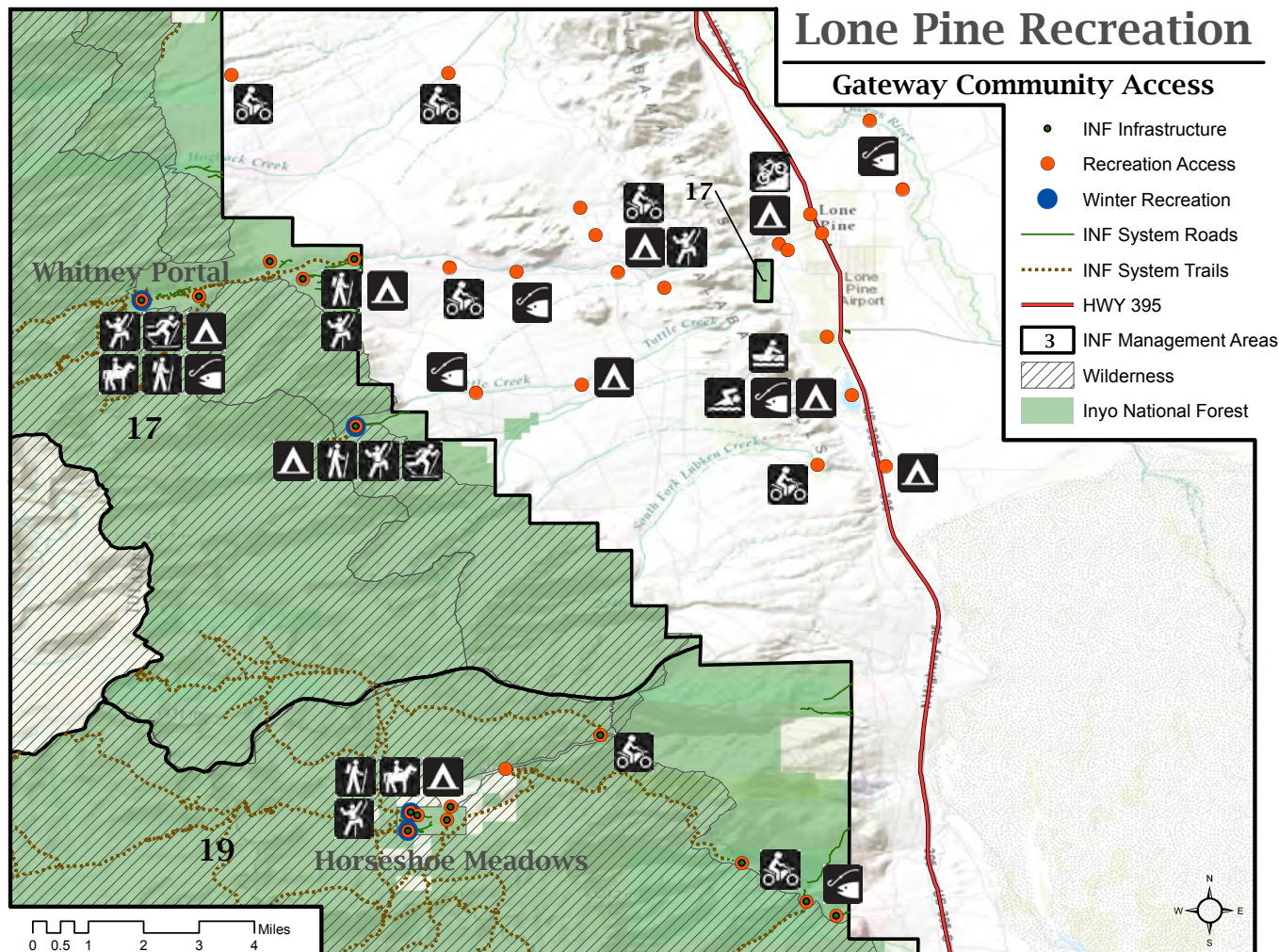
Bishop Recreation

Gateway Community Access



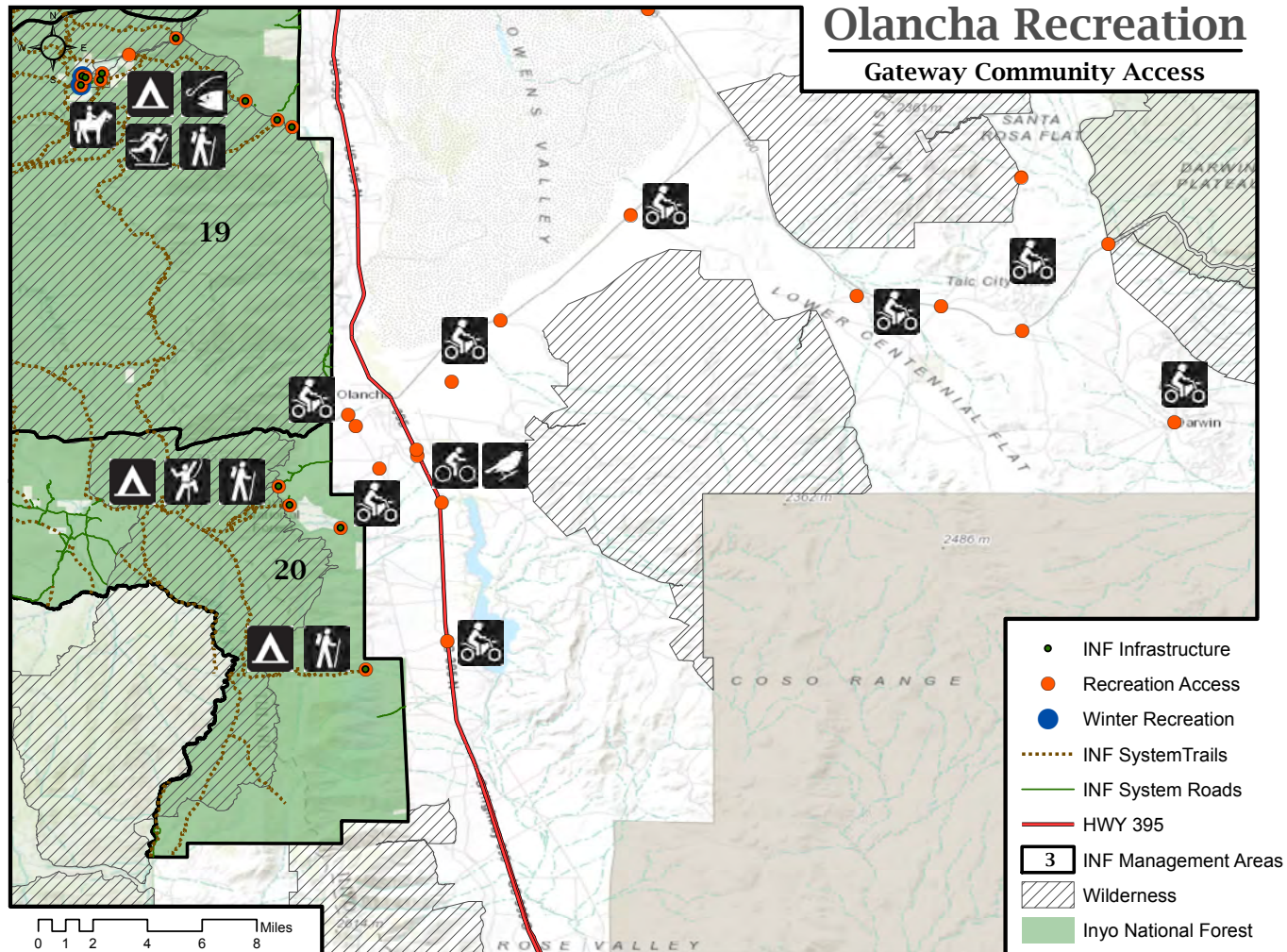
Lone Pine Recreation

Gateway Community Access



Olancha Recreation

Gateway Community Access





Sustainable Recreation

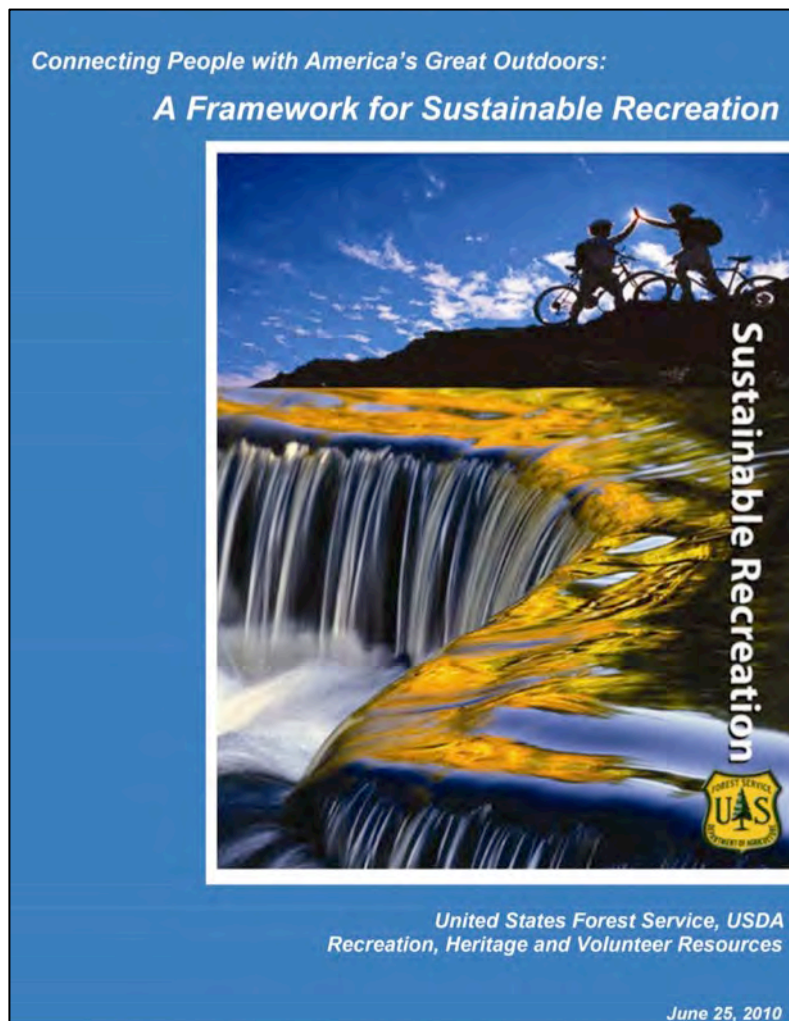
Connecting People with America's Great Outdoors:

A Framework for Sustainable Recreation



*United States Forest Service, USDA
Recreation, Heritage and Volunteer Resources*

June 25, 2010



Goals:

- **Provide** a diverse range of quality natural and cultural resource based recreation opportunities in partnership with people and communities.
- **Protect** the natural, cultural, and scenic environment for present and future generations to enjoy.
- **Partner** with public and private recreation benefit providers that - together - we meet public needs and expectations.
- **Perform and plan** by implementing systems and processes to ensure: effective decisions, sound investments, and accountability; collaborative approaches to integrated solutions across the landscape; and enhanced professionalism of our workforce.

“The condition of our recreation and heritage assets has steadily diminished, resulting in a ballooning backlog of maintenance needs for recreation facilities, trails, and roads.”

USFS – “Framework for Sustainable Recreation”

“The condition of our recreation and heritage assets has steadily diminished, resulting in a ballooning backlog of maintenance needs for recreation facilities, trails, and roads.”

“National economic conditions and mounting financial demands underscore the inadequacy of traditional funding sources to meet growing needs...”

USFS – “Framework for Sustainable Recreation”



Who's read the Draft Management Plan?



Who's going to Comment?



Comments Due August 25!

The Evening's Program





Volunteers/Interpretation/Partnerships/Stewardship

Digital Connection/Technology

Responsive Special Use Permits

Citizens Access/Trails

Recreation Places / Iconic Places

1. Volunteers/Interpretation/Partnerships/Stewardship (VIPs)

- a. Increase stewardship capacity by expanding partnership and volunteer opportunities outside of appropriated funds.

2. Digital Connection/Technology

- a. Modernize the agency's use of emerging communication channels to capture live-time data and improve quality of data collected.

3. Responsive Special Use Permits

- a. Enhance guest services and connections to public lands by streamlining and updating the issuing of special use permits.

4. Citizens Access/Trails

- a. Turn attention to developing sustainable systems for access including trails, OHV and OSV use.

5. Recreation Places / Iconic Places

- a. Better engage gateway partners by developing allocation criteria for recognizing and managing special places beyond those designated by Congress or the President.

Emphasis Areas	Desired Conditions in Existing INF Plan by Emphasis Area	ESRC Proposed Desired Conditions by Emphasis Area
Volunteers/ Interpretation/ Partnerships/ Stewardship (VIPS)	<ul style="list-style-type: none"> ➤ Develop memoranda of agreements or other protocols between the forest and local governments as appropriate to guide coordination processes and reflect local perspectives and interests (PDF Pg 93 – Local Communities – LOC-FW-GOAL 01) ➤ Maintain and expand contracting and partnership opportunities with local governments, businesses and organizations. Develop partnerships that leverage different sources of funding to support opportunities to contribute to the economic and social sustainability of local communities. (PDF Pg 94 - Volunteers/Interpretation/Partnerships/Stewardship – VIPS-FW-GOAL 03) ➤ The forest should designate a partnership coordinator who will define an easily understood process for becoming a partner as well as expectations for both the forest and the partner. (PDF Pg 151 – Appendix C: A Renewed Partnership Focus for the Inyo National Forest – Partnership Culture) ➤ Install and maintain appropriate multilingual information boards, interpretive panels and regulatory signs at developed sites and dispersed areas within sites of sensitive resources. (PDF Pg 157 – Appendix D: Management Strategies for Resolving Recreation Resource Conflicts) 	<p>Focal Points:</p> <p>(A) Partnerships – General</p> <p>(B) Partnership Coordinator</p> <p>(C) Partnerships – Local Government</p> <p>(D) Volunteers</p> <p>(E) Interpretive/ Signage/ Education</p> <p>(F) Stewardship</p> <p> </p>

Emphasis Areas	Desired Conditions in Existing INF Plan by Emphasis Area	ESRC Proposed Desired Conditions by Emphasis Area
Digital Connection	<ul style="list-style-type: none"> ➤ Work with local governments, businesses, and organizations to collect economic data to track changes for businesses in sectors dependent on forest activities. (PDF Pg 94 – Local Communities – LOC-FW-GOAL 03) ➤ Regularly report potential projects suitable for partnership and volunteer opportunities to the public. (PDF Pg 94 – Volunteers/Interpretation/Partnerships/Stewardship– VIPS-FW-GOAL 02) ➤ To the extent practical, harmonize recreation direction for forest visitors to minimize confusion when crossing administrative boundaries. (PDF Pg 95 – Sustainable Recreation – REC-FW-GOAL 02) ➤ Provide and update interpretive signage, wayside exhibits, publications and programs using a variety of media and methods. (PDF Pg 98 – Potential Management Approaches- Volunteers/Interpretation/Partnerships/Stewardship) ➤ Explore partnership opportunities with user groups and seek reliable information sources outside of the agency to improve data collection and data management on recreation use and demand. (PDF Pg 148 – App B: Proposed and Possible Actions – Sustainable Recreation) 	Focal Points: <ul style="list-style-type: none"> (A) Technology (B) Data (C) Emergency Services (D) User Systems (E) Accessibility

Emphasis Areas	Desired Conditions in Existing INF Plan by Emphasis Area	ESRC Proposed Desired Conditions by Emphasis Area
Responsive Use Permits	<ul style="list-style-type: none"> ➤ Permitted recreation uses, such as recreation special events or guided activities, are consistent with recreation settings, protect natural and cultural resources and support community goals. (PDF Pg 43 – Sustainable Recreation – REC-FW-DC 11) ➤ Coordination of land resource planning efforts with other federal, state, tribal, county and local governments, and adjacent private landowners, promotes compatible relationships between activities and uses on National Forest System lands and adjacent lands of other ownership. (PDF Pg 48 – Lands – LAND-FW-DC 02) ➤ Work with local governments, businesses and organizations to assist in permit processes, including providing technical assistance, processing programmatic environmental clearance, and other measures to streamline the time and expense of permitting. (PDF Pg 147 – Appendix B: Proposed and Possible Actions – Local Communities) ➤ Issue and supervise permits for new special use activities on the forest including powerlines, special events, large group gatherings, outfitter-guide activities and research. (PDF Pg 148 – Appendix B: Proposed and Possible Actions – Sustainable Recreation) ➤ Expand partnerships with other federal, state, and local government agencies, as well as associations, non-government organizations, outfitters and guides, local businesses, and other community groups, to leverage information (help serve as messengers to the visiting public) and resources for mutual benefit to enhance and improve forest infrastructure (i.e. 	<p>Focal Points:</p> <ul style="list-style-type: none"> (A) Permit System (B) User Experience (C) Stewardship Provisions (D) Partnership Engagement

Emphasis Areas	Desired Conditions in Existing INF Plan by Emphasis Area	ESRC Proposed Desired Conditions By Emphasis Area
Citizens Access/ Trails	<ul style="list-style-type: none"> ➤ The diverse landscapes of the forest offer a variety of year-round recreation settings for a broad range of nature-based recreation opportunities, derived from assigned recreation opportunity spectrum classes and recreation places management areas. Management focuses on settings that enhance the forest recreation program niche. (PDF Pg 42 – Sustainable Recreation – REC-FW-DC 01) ➤ Visitors can connect with nature, culture and history through a full range of inclusive and sustainable outdoor recreation opportunities. (PDF Pg 43 – Sustain/Recreation – REC-FW-DC 04) ➤ Trail opportunities are available in a variety of settings that provide differing levels of challenge and types of experiences. (PDF Pg 43 – Sustainable Recreation – REC-FW-DC 07) ➤ The trail system provides a variety of motorized and non-motorized recreational opportunities during summer and winter and distributed across the forest. Trails access destinations that provide for loop opportunities that also connect to a larger trail system, provide linkage from local communities to the forest and are compatible with other resources. (PDF Pg 43 – Sustain/ Recreation – REC-FW-DC 15) ➤ Work with partners and volunteers to provide recreation opportunities, maintain and enhance recreation settings, collect and manage data on recreation use and demand, and contribute to socioeconomic benefits associated with recreation and tourism. (PDF Pg 94 – Volunteers/Interpretation/Partnerships/Stewardship – VIPS-FW-GOAL 04) 	<p>Focal Points:</p> <ul style="list-style-type: none"> (A) New Trails (B) Trail Maintenance (C) Trail Accessibility (D) User Conflicts (E) Specific User Groups

Iconic Places	INF Plan Proposed Desired Conditions Are Listed on Pages Following this Table by Gateway Area for Geographic Reference	ESRC Proposed Desired Conditions by Geographic Region
Northern Gateway Communities	<p>There are eleven (11) Recreation Places listed in Chapter 3 – Management Strategy as Recreation Places - that are relevant to the Northern Gateway Communities:</p> <ol style="list-style-type: none"> 1. Benton-Casa Diablo Place – Pg 62 2. Coyote Place – Pg 74 3. Glass Mountain Place – Pg 74 4. June Lake Loop-Walker-Parker Place – Pg 76 5. Mammoth Place – Pg 77 6. Mammoth Escarpment Place – Pg 77 7. Mono Basin-Lee Vining Place – Pg 79 8. Owens River Headwaters Place – Pg 80 9. Pizona Place – Pg 81 10. Reds Meadow-Fish Creek Place – Pg 81 11. Upper Owens River Place – Pg 82 	New Recreation/ Iconic Places?
Central Gateway Communities	<p>There are three (3) Recreation Places listed in Chapter 3 – Management Strategy as Recreation Places - that are relevant to the Central Gateway Communities:</p> <ol style="list-style-type: none"> 1. Benton-Casa Diablo Place – Pg 72 2. Bishop to Convict Creek Place – Pg 73 3. White Mountains Place – Pg 83 	New Recreation/ Iconic Places?
Southern Gateway Communities	<p>There are three (3) Recreation Places listed in Chapter 3 – Management Strategy as Recreation Places - that are relevant to the Southern Gateway Communities:</p> <ol style="list-style-type: none"> 1. Golden Trout – South Sierra Place – Pg 75 2. Inyo Mountains Place – Pg 75 3. Owens Valley Escarpment Place – Pg 80 	New Recreation/ Iconic Places?



Volunteers/Interpretation/Partnerships/Stewardship

Increase stewardship capacity by expanding partnership and volunteer opportunities outside of appropriated funds.

Volunteers/Interpretation/Partnerships/Stewardship

“Develop memoranda of agreements or other protocols between the forest and local governments as appropriate to guide coordination processes and reflect local perspectives and interests.”

(PDF Page 93 – Local Communities)

“Maintain and expand contracting and partnership opportunities with local governments, businesses and organizations. Develop partnerships that leverage different sources of funding to support opportunities to contribute to the economic and social sustainability of local communities.”

(PDF Page 94 – Volunteers/Interpretation/Partnerships/Stewardship)

Volunteers/Interpretation/Partnerships/Stewardship

“The forest should designate a partnership coordinator who will define an easily understood process for becoming a partner as well as expectations for both the forest and the partner.”

(PDF Page 151 – Appendix C: A Renewed Partnership Focus for the Inyo National Forest)

“Install and maintain appropriate multilingual information boards, interpretive panels and regulatory signs at developed sites and dispersed areas within sites of sensitive resources.”

(PDF Page 157 – Appendix D: Management Strategies)

ESRC Next Practice Examples: VIPS

“Streamline partnership processes and increase capacity to engage and support partners. These actions will contribute to the long term sustainability and relevance to society of natural and cultural landscapes.”

(Page 6 USFS Framework for Sustainable Recreation – V. Forge Strategic Partnerships)

“Continuously seek to improve community participation and collaboration skills using the latest research to build long lasting partnerships and working relationships to move together toward sustainable conditions.”

(Page 7 USFS Framework for Sustainable Recreation – VII. Know Visitors/Community Stakeholders)

ESRC Next Practice Examples: VIPS

“Better utilize interpretation and conservation education to build a conservation ethic among forest visitors.”

(Page 9 USFS R1 Recreation, Heritage Wilderness Strategy – Identity & Visibility)

“Fully explore other opportunities to provide recreation through governmental partners, non-profits or the private sector, before USFS providing those opportunities.”

(Page 10 USFS R3 Sustainable Recreation Strategy – Agency, Communities, Partners 2.3)



Digital Connection/Technology

Modernize the agency's use of emerging communication channels to capture live-time data and improve quality of data collected.

Digital Connection/Technology

“Work with local governments, businesses, and organizations to collect economic data to track changes for businesses in sectors dependent on forest activities.”

(PDF Page 94 – Local Communities – LOC-FW-GOAL 03)

“Regularly report potential projects suitable for partnership and volunteer opportunities to the public.”

(PDF Page 94 – Volunteers/Interpretation/Partnerships/Stewardship – VIPS-FW-GOAL 02)

Digital Connection/Technology

“To the extent practical, harmonize recreation direction for forest visitors to minimize confusion when crossing administrative boundaries.”

(PDF Page 95 – Sustainable Recreation – REC-FW-GOAL 02)

“Provide and update interpretive signage, wayside exhibits, publications and programs using a variety of media and methods.”

(PDF Page 98 – Potential Management Approaches)

“Explore partnership opportunities with user groups and seek reliable information sources outside of the agency to improve data collection and data management on recreation use and demand.”

(PDF Page 148 – App B: Proposed and Possible Actions – Sustainable Recreation)

ESRC Next Practices – Digital Connection/Technology

“Continuously adapt visitor use monitoring system and work closely with Research and Development to stay current with demographic shifts, changing values and demands, data sources, new technologies, and management tools.

(Page 7 USFS Framework Sustainable Recreation – VII. Know Visitors/Stakeholders)

“Improve capacity to use emerging social media technology to better connect with diverse users and cultures.”

(Page 7 USFS Framework Sustainable Recreation – VIII. Provide the Right Information)

“Invest in consolidating and improving external recreation information systems with an emphasis on quality, consistency, accessibility and convenience.”

(Page 7 USFS Framework Sustainable Recreation – VIII. Provide the Right Information)



Responsive Special Use Permits

Enhance guest services and connections to public lands by streamlining and updating the issuing of special use permits.

Responsive Special Use Permits

“Permitted recreation uses, such as recreation special events or guided activities, are consistent with recreation settings, protect natural and cultural resources and support community goals.”

(PDF Page 43 – Sustainable Recreation – REC-FW-DC 11)

“Work with local governments, businesses and organizations to assist in permit processes, including providing technical assistance, processing programmatic environmental clearance, and other measures to streamline the time and expense of permitting. ”

(PDF Page 147 – Appendix B: Proposed and Possible Actions – Local Communities)

Responsive Special Use Permits

“Issue and supervise permits for new special use activities on the forest including powerlines, special events, large group gatherings, outfitter-guide activities and research.”

(PDF Page 148 – Sustainable Recreation – REC-FW-DC 11)

“Expand partnerships with other federal, state, and local government agencies, as well as associations, non-government organizations, outfitters and guides, local businesses, and other community groups, to leverage information (help serve as messengers to the visiting public) and resources for mutual benefit to enhance and improve forest infrastructure (i.e. roads, trails, campgrounds)”

(PDF Page 151 – Appendix B: Proposed and Possible Actions – Sustainable Recreation)

ESRC Next Practices Examples - Permits

“Streamline partnership processes and increase capacity to engage and support partners. These actions will contribute to the long term sustainability and relevance to society of natural and cultural landscapes.”

(Page 6 USFS Framework for Sustainable Recreation – V. Forge Strategic Partnerships)

“Compile and/or develop Best Management Practices to assist the field in managing a wide array of partnerships (volunteers, challenge cost share and other partner organizations).”

(Page 16 USFS R1 Sustainable Recreation Strategy – 4. Partnerships, Volunteers, Youth)



Citizens Access/Trails

Turn attention to developing sustainable systems for access including trails, OHV and OSV use.

Citizens Access/Trails

“The diverse landscapes of the forest offer a variety of year-round recreation settings for a broad range of nature-based recreation opportunities, derived from assigned recreation opportunity spectrum classes and recreation places management areas. Management focuses on settings that enhance the forest recreation program niche.”

(PDF Page 42 – Sustainable Recreation – REC-FW-DC 01)

“Visitors can connect with nature, culture and history through a full range of inclusive and sustainable outdoor recreation opportunities.”

(PDF Page 43 – Sustainable Recreation – REC-FW-DC 04)

Citizens Access/Trails

“The trail system provides a variety of motorized and non-motorized recreational opportunities during summer and winter and distributed across the forest. Trails access destinations that provide for loop opportunities that also connect to a larger trail system, provide linkage from local communities to the forest and are compatible with other resources.”

(PDF Page 43 – Sustainable Recreation – REC-FW-DC 15)

“Work with partners and volunteers to provide recreation opportunities, maintain and enhance recreation settings, collect and manage data on recreation use and demand, and contribute to socioeconomic benefits associated with recreation and tourism.”

(PDF Page 94 – Volunteers/Interpretation/Partnerships/Stewardship – VIPS-FW-GOAL 04)

ESRC Next Practice Examples: Citizen Access/Trails

“Actively engage internal (line officers, program managers, technicians) and external (partners, volunteers, friends) stakeholders in learning sessions to gain leader commitment for a sustainable trail system.”

(Page 8 – National Strategy for Sustainable Trail System – Leader Intent 1.2)

“Champion a collaborative approach to develop training curriculum for practitioners, managers, and volunteers that includes three basic elements: trail program and information management; trail maintenance and field skills, including traditional skills and techniques; and volunteer/partner management and coordination.”

(Page 8 – National Strategy for Sustainable Trail System – Organization and Talent 2.4)

ESRC Next Practice Examples: Citizen Access/Trails

“Encourage assessments with partners across jurisdictional and cultural boundaries that evaluate community trail needs, new and emerging users, and resource protection needs across local geographic areas.”

(Page 8 – National Strategy for Sustainable Trail System – Relevancy 3.5)

“Invite national/regional/local trails groups to create a shared understanding of how to better balance desire for more opportunities with the need for a sustainable trail system.”

(Page 9 – National Strategy for Sustainable Trail System – Sustainable Systems 4.1)



Recreation Places / Iconic Places

Better engage gateway partners by developing allocation criteria for recognizing and managing special places beyond those designated by Congress or the President.

Recreation Places / Iconic Places

There are three (3) Recreation Places listed in Chapter 3 – Management Strategy as Recreation Places - that are relevant to the Southern Gateway Communities:

- 1. Golden Trout – South Sierra Place – *PDF Pg 75***
- 2. Inyo Mountains Place – *PDF Pg 75***
- 3. Owens Valley Escarpment Place – *PDF Pg 80***

Recreation Places / Iconic Places - #1

- Sustained as a remote, backcountry area. (1)
- Sustained as a natural-appearing landscape with pockets of high-quality concentrated recreation with a management emphasis on dispersed recreation experiences. (3)
- Sustained as a remote, backcountry area with a management emphasis on continuing to provide visitors with a wildness and remoteness experience. (2)
- Scenic character is sustained by resilient landscapes that support and enhance the scenery setting. (1,2)
- Scenic character is sustained by resilient landscapes that support and enhance the scenery setting and wilderness characteristics of the place. (3)

Recreation Places / Iconic Places - #2

- **Development in the place is aligned with the recreation opportunity spectrum (ROS) and managed and adapted to changing demographics, connectivity to adjacent communities and supporting the connection of people to nature. (3)**
- **Utilities are considered if their location will not limit the achievement of the roles, contributions and sense of place. (1,2,3)**
- **Management actions are aligned with the ROS and the roles, contributions and sense of the place. (1,2,3)**
- **Areas of dispersed use are managed to maintain the ROS. (3)**
- **Outfitter and guide services promote the roles, contributions and sense of the place, and support meeting the needs of the ROS with the agency and partners. (2,3)**

Recreation Places / Iconic Places - #3

- **Filming opportunities are authorized that encourage responsible use and stewardship of public lands. (2,3)**
- **Special use permits are authorized that align with the ROS and achieving the desired conditions of the place. (3)**
- **Trail system is aligned with the ROS and management emphasis is on dispersed recreation to provide visitors with a sense and experience of wildness and remoteness. (1,2)**

Recreation Places / Iconic Places - #4

- **Trail system is aligned with the ROS and management actions focus on maintaining the remoteness of the place. (3)**
- **Access is provided for motorized users along designated routes. (1,2)**
- **The road system supports delivery and staging to non-motorized trailheads used for wilderness day overnight use. (3)**

ESRC Next Practice – Iconic Places/Recreation Places

“Make strategic investments and leverage existing and future external partnerships for additional resources and funding to help sustain and feature high value treasured landscapes and sites.”

(Page 6 USFS Framework Sustainable Recreation – IV. Invest in Special Places)

“Evaluate other areas within the National Forest System that have outstanding recreational, scenic, historic, or other values of high attractiveness for designation and management as special areas.”

(Page 6 USFS Framework Sustainable Recreation – IV. Invest in Special Places)

ESRC – Upcoming Meetings

EVENT SCHEDULE

Bishop | Mon., June 27 Cerro Coso Community College

June Lake | Mon., July 11 June Lake Community Center

Bishop | Mon., July 18 Tallman Pavillion, Tri-County Fairgrounds

Lone Pine | Mon., July 25 Statham Hall

Bishop | Mon., August 15 Cerro Coso Community College

All meetings will begin at 6:00 p.m. and end by 8:00 p.m.



ESRC – On Line Resources

- eastsierrarec.org
- <http://mltpa.org/advocacy/esrc-public-meeting-information-2016>
- <http://www.sierrawave.net/advertising/>





Thank You!

