

ESRC

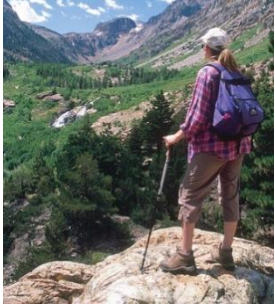


Eastern Sierra Recreation Collaborative: Inyo National Forest Management Plan Revision

Cerro Coso Community College, Bishop, CA
October 14, 2014 - 5:30pm to 8:30 pm



Many Recreation Uses - World Class Experience



ESRC Kickoff Meeting Agenda

- Welcome – Why We Are here
- Overview of the ESRC Process
- The USFS Framework for Sustainable Recreation
- Exercise: Visualizing Eastern Sierra Recreation Access Points, Assets, Opportunities, and Gaps
- Exercise: What Are Our Shared Recreation Values That Will Frame Our Vision?
- Wrap Up and Next Steps



Welcome!

The Eastern Sierra Recreation Collaborative (ESRC) will be hosting four professionally facilitated public meetings in October and November 2014 in support of the Inyo National Forest Management Plan Revision process.

The ESRC is grateful to its partners for their assistance with the tasks necessary to convene these public meetings, including the Mammoth Lakes Trails and Public Access Foundation (MLTPA), which will be providing website services.

For detailed information on these public meetings, including dates, times, and meeting materials, please click here:

[PUBLIC MEETING INFORMATION](#)

If you or your organization has communication tools and you'd like to help out as an "ESRC Communicator" spreading the word about any or all of the four public meetings, please click here:

[WE WANT TO HELP SPREAD THE WORD](#)

To be kept up to date on ESRC meetings and announcements from the collaborative, please click here to be added to MLTPA's email list:

[KEEP ME INFORMED](#)

Thank You Very Much

We look forward to seeing you this fall!

<http://eastsierrarec.org/>

Eastern Sierra Recreation Collaborative



Bishop | Tues., October 14
Cerro Coso Community College

Big Pine | Tues., October 28
Big Pine Town Hall

June Lake | Thurs., October 30
June Lake Community Center

Bishop | Wed., November 12
Cerro Coso Community College

Welcome

As a partner in the Eastern Sierra Recreation Collaborative (ESRC), MLTPA is proud to be able to provide this web page for use during the upcoming public meetings in October and November. We know what "grass roots" means - we're happy to provide this web page and spare the ESRC the expense of having to build something on their own.

What You Need to Know

In preparation for the next phase of the Inyo National Forest Management Plan Revision Process, the Eastern Sierra Recreation Collaborative (ESRC) is inviting recreation enthusiasts and regional stakeholders to participate in a series of public meetings scheduled for October and November of this year.

<http://mltpa.org/advocacy/esrc-public-meeting-information/>

These four ESRC meetings will be open public forums intended to provide diverse recreationists and stakeholders throughout the Eastern Sierra with an opportunity to collaboratively develop a regional voice representing the area's recreation economy to help inform local, state and federal planning and policy efforts. The meetings will focus on identifying key recreation values in preparation for the anticipated November 2014 release of the preliminary alternatives for the Inyo National Forest's Management Plan Revision process. The efforts of the ESRC are intended to support the Inyo National Forest as it makes its first revision to the Forest Management Plan since 1988.

Tuesday, October 14 - Bishop - Cerro Coso Community College

- Collaborative Kick Off (5:30 - 8:30)

Tuesday, October 28 - Big Pine - Big Pine Town Hall

- Southern Gateway Communities Meeting (5:30 - 8:30)

Thursday, October 30 - June Lake - June Lake Community Center

- Northern Gateway Communities Meeting (5:30 - 8:30)

Wednesday, November 12 - Bishop - Cerro Coso Community College

- Drafting a Recreation Strategy (5:30 - 8:30)

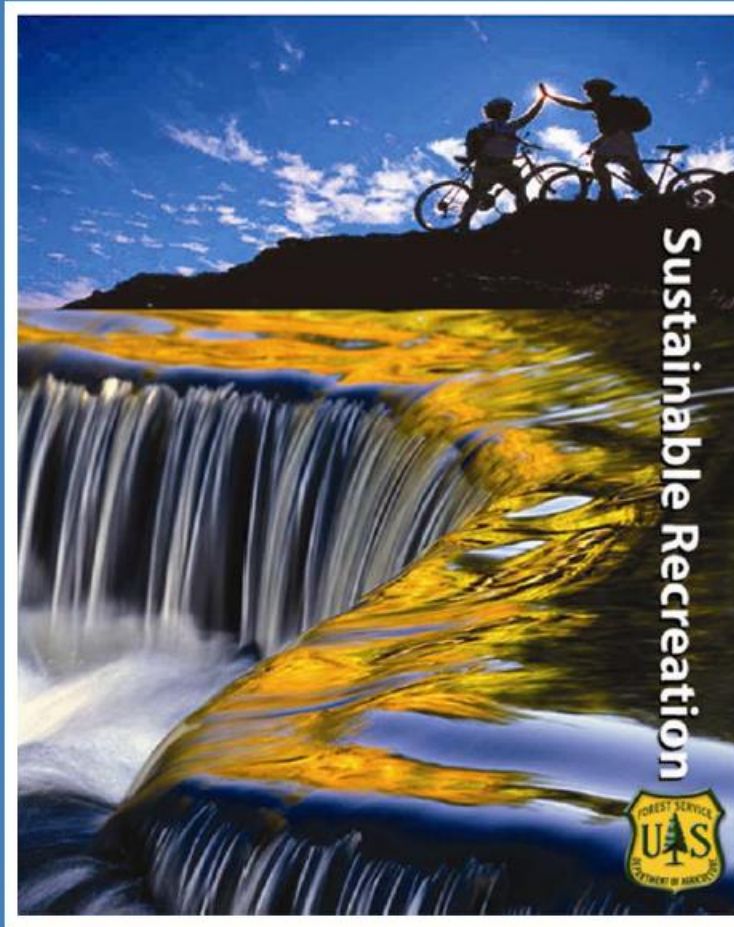
What is “Recreation”?

- Recreation (noun)
 - *“something people do to relax or have fun; activities done for enjoyment”*
- Re-creation (origin)
 - *“restoration to health”*



Chief Tidwell's Introduction to the Framework for Sustainable Recreation.mp4

*Connecting People with America's Great Outdoors:
A Framework for Sustainable Recreation*



USFS Vision:

“Renewing Body and Spirit,
Inspiring Passion for the
Land.”

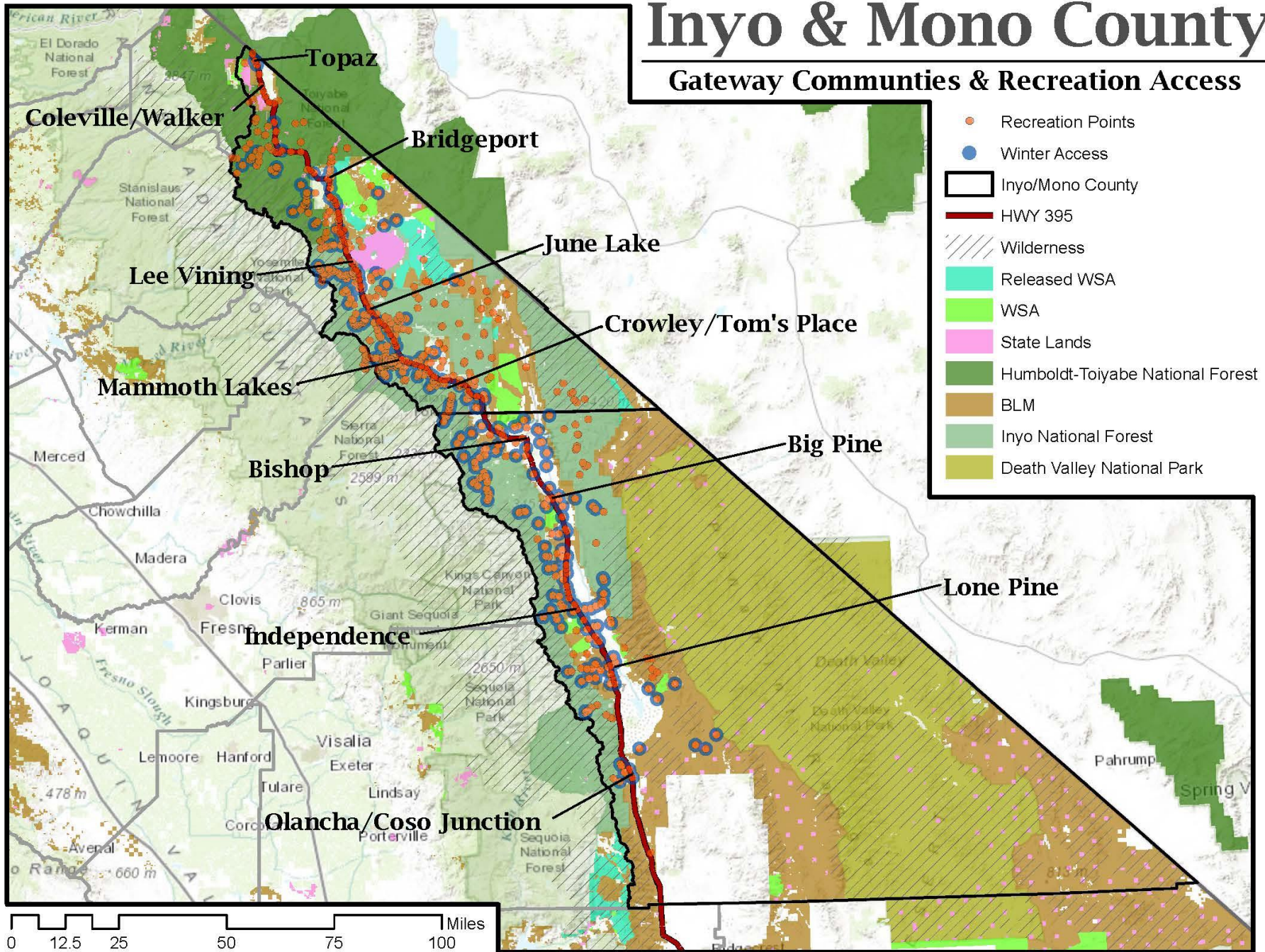
<http://www.reclink.us/>

*United States Forest Service, USDA
Recreation, Heritage and Volunteer Resources*

June 25, 2010

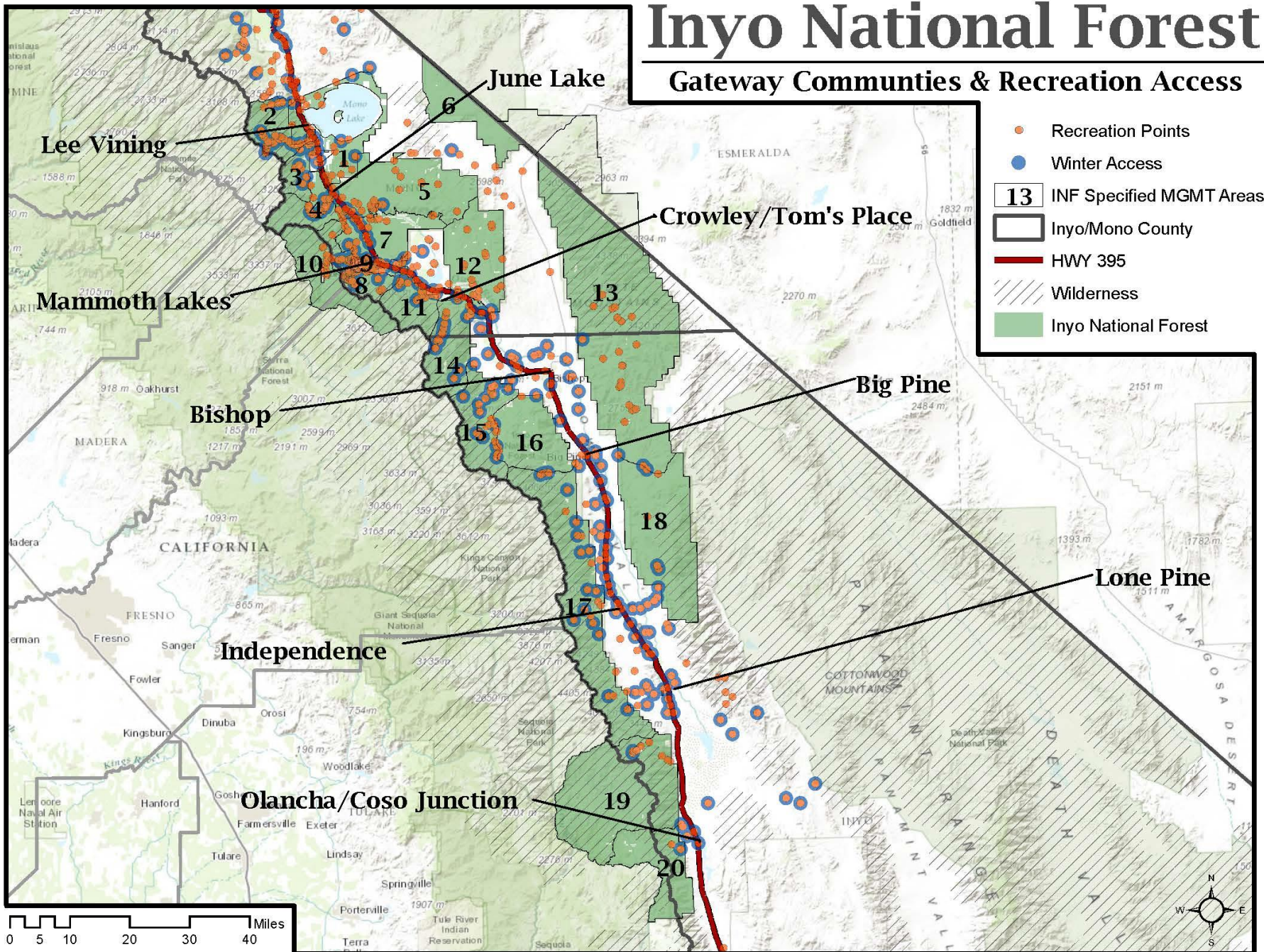
Inyo & Mono County

Gateway Communities & Recreation Access



Inyo National Forest

Gateway Communities & Recreation Access



Map Review

Attach a post it note to any area of the maps if:

- You have a question about recreation access points on either map
- You are especially interested in one or more of the recreation access points
- You see a recreation access point that is missing

Focus on:

- Recreation Access Points
- Gateway Communities
- Recreation Uses
- Forest Service Management Zones

Recreation Matters

- Values =
 - What YOU Care About
- Principles =
 - What is Important to YOU
- Guidelines =
 - We must, We Should, We Should Not

Our Recreation Values

“What recreation values, principles, or guidelines do we want to see included in the Inyo National Forest Management Plan Revision?”



Next Steps

- **Public Meeting #2 – Big Pine - Big Pine Town Hall**
Gateway Communities Meeting (Oct. 28 - 5:30 - 8:30)
- **Public Meeting #3 – June Lake – June Lake Community Center**
Gateway Communities Meeting (Oct. 30 - 5:30 - 8:30)
- **Public Meeting #4 - Bishop - Cerro Coso Community College**
Drafting a Recreation Strategy (Nov. 12 - 5:30 - 8:30)

Thank You!

